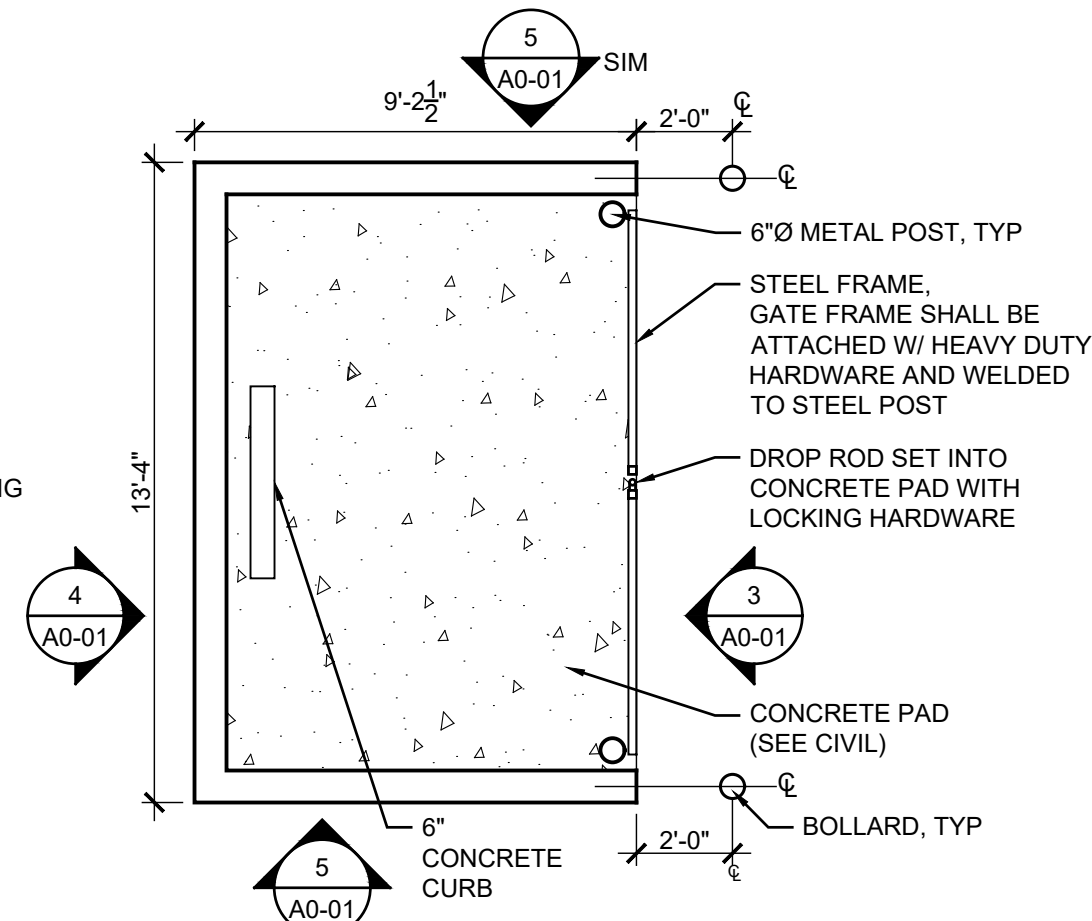


5 TRASH ENCLOSURE ELEVATION
SCALE: 1/4" = 1'-0"

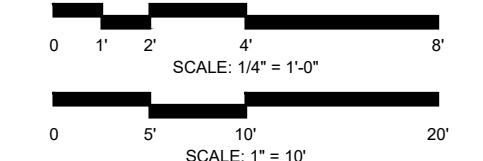
4 TRASH ENCLOSURE ELEVATION
SCALE: 1/4" = 1'-0"

3 TRASH ENCLOSURE ELEVATION
SCALE: 1/4" = 1'-0"



2 TRASH ENCLOSURE PLAN
SCALE: 1/4" = 1'-0"

- SITE PLAN LEGEND**
- NEW BUILDING
 - EXISTING BUILDING, NOT IN SCOPE
- SITE PLAN KEYNOTES**
- EXISTING HYDRANT
 - EXISTING UTILITY POLE
 - PLANTING BED W/ MULCH, SEE L0-01
 - CURB CUT TO BE REMOVED
 - ADJACENT BUILDING FIRE ESCAPE ENCROACHMENT
 - ADJACENT BUILDING ENCROACHMENT
 - TRASH ENCLOSURE - SEE CIVIL FOR DETAILS
 - (1) LOADING BERTH
 - TRANSFORMER
 - CONCRETE SIDEWALK
 - CONCRETE CURB
 - ASPHALT PAVING
 - CONCRETE APRON
 - CATCH BASIN - SEE CIVIL
 - MANHOLE - SEE CIVIL
 - GREASE BASIN - SEE CIVIL
 - TRIPLE BASIN - SEE CIVIL
 - BOLLARD - SEE 3/A1-01
 - EXISTING GUTTER FROM NEIGHBORING BUILDING W/ NEW DOWNSPOUT TO YARD



2	06/28/21	ISSUED FOR PERMIT
1	05/05/21	ISSUED FOR FOUNDATION PERMIT
NO	DATE	ISSUE DESCRIPTION

COPYRIGHT 2021, SULLIVAN GOULETTE & WILSON, LTD. EXPRESSLY RESERVES ITS COMMON LAW COPYRIGHT AND OTHER PROPERTY RIGHTS IN THESE PLANS. THESE PLANS ARE NOT TO BE REPRODUCED, CHANGED OR COPIED IN ANY FORM OR MANNER WHATSOEVER, NOR ARE THEY TO BE ASSIGNED TO ANY THIRD PARTY, WITHOUT FIRST OBTAINING THE EXPRESS WRITTEN PERMISSION AND CONSENT OF SULLIVAN GOULETTE & WILSON, LTD.

THESE DRAWINGS MAY HAVE BEEN REPRODUCED AT A SIZE DIFFERENTLY THAN ORIGINALLY DRAWN. OWNER AND ARCHITECT ASSUME NO RESPONSIBILITY FOR USE OF INCORRECT SCALE.

CONTRACTOR SHALL VERIFY ALL EXISTING CONDITIONS PRIOR TO PROCEEDING WITH CONSTRUCTION AND NOTIFY ARCHITECT IMMEDIATELY OF ANY DISCREPANCIES OR CONFLICTS.

PRINCIPAL: MS MS, GG F.M.: MA DRAWN BY: JF, YY

**SULLIVAN
GOULETTE
& WILSON**

ARCHITECTS

444 N MICHIGAN AVE
SUITE 1850
CHICAGO, IL 60611

Ph 312.988.7412
Fx 312.988.7409
www.sgwararch.com

PROFESSIONAL DESIGN FIRM
License Number: 184-001505
Expiration Date: April 30, 2021

3217 N CLARK STREET

CHICAGO, ILLINOIS 60657

SITE PLAN



N CLARK STREET
TWO-WAY TRAFFIC

N DAYTON STREET
TWO-WAY TRAFFIC

1 SITE PLAN
SCALE: 1" = 10'

Bike Trac

Recommended Setbacks

Model #	Description	Weight	Length	Width	Space Requirement
600T	Locking	16.7 lbs	53.5"	4.4"	7'1" x 4'0"
600D	Locking	9 lbs	53.5"	2.7"	7'1" x 4'0"
600D	Non-Locking	9 lbs	53.4"	2.7"	7'1" x 4'0"
600D	Non-Locking	9 lbs	59.5"	5.2"	7'1" x 4'0"
600DPC	Locking	13 lbs	59.4"	5.2"	7'1" x 4'0"

Our Saris Infrastructure representatives can assist with custom layout and spacing to meet your room dimensions and desired bike capacity.

Saris Infrastructure 800.783.7257 www.sarisinfrastructure.com

per Trac

16' minimum ceiling height

Frame Color (Black Only)

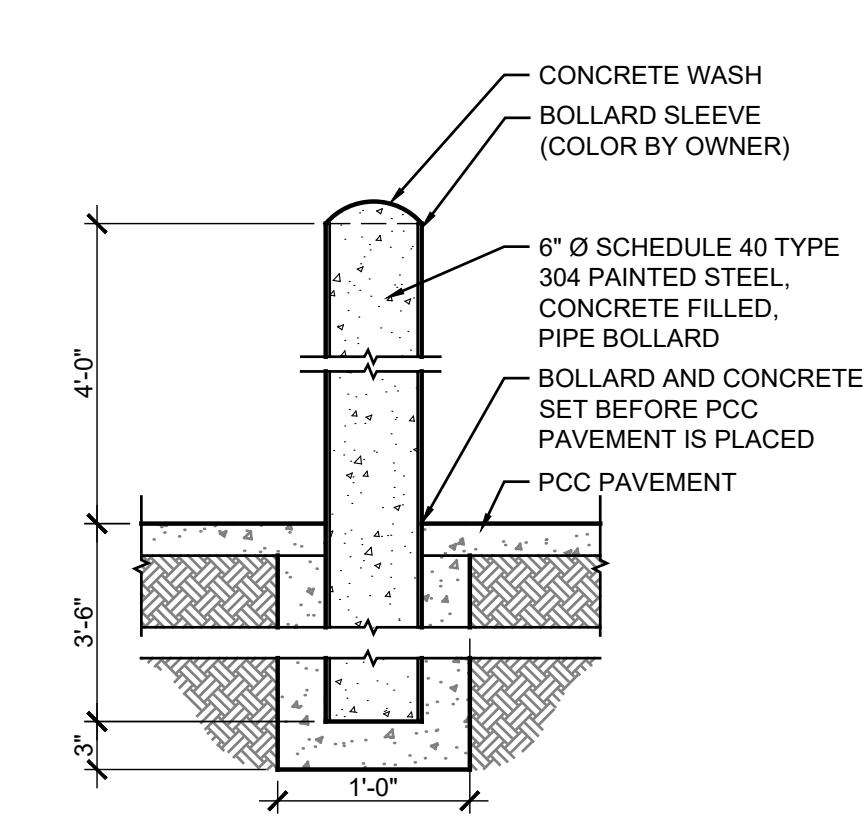
Recommended anchor: #6254, 6" minimum embedment, 48" max spacing

10 year warranty

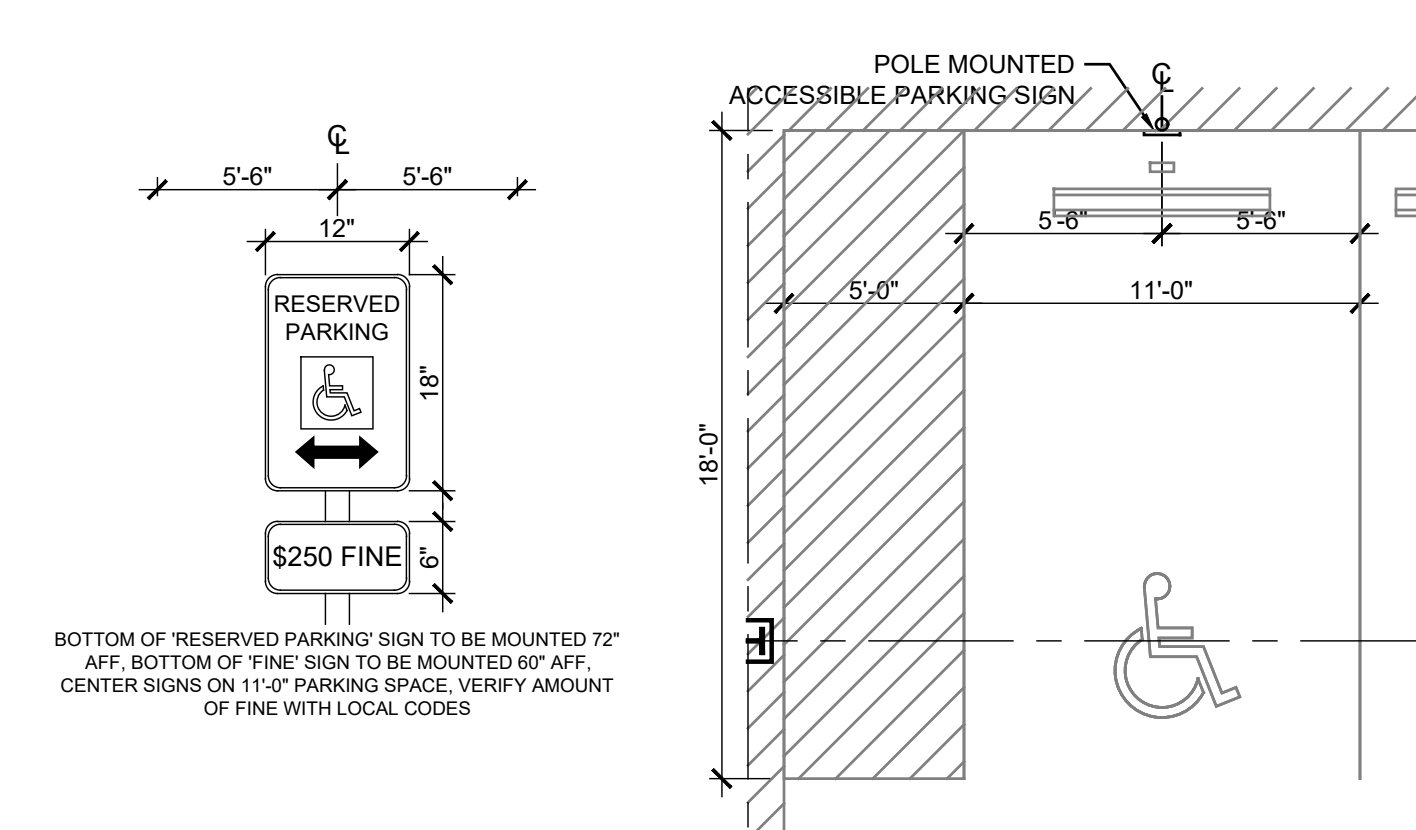
Made in the USA

Architects Note: Anchors must be purchased separately

Downloadable product resources available online



3 BOLLARD ELEVATION
SCALE: 1" = 1'-0"



2 ACCESSIBLE PARKING & SIGNAGE
SCALE: 3/16" = 1'-0"

- FLOOR PLAN KEYNOTES:
NOTE: KEYED NOTES BELOW APPLY TO MULTIPLE SHEETS AND MAY NOT BE APPLICABLE TO THIS SHEET
- 1 BIKE STORAGE RACK, SEE 4/A1-01
 - 2 DOG WASH (SEE PLUMBING)
 - 3 GAS METERS (SEE MECHANICAL)
 - 4 BALCONY
 - 5 ROOF HATCH
 - 6 ACCESSIBLE PARKING SIGN (SEE 2/A1-01)
 - 7 BOLLARD (SEE 3/A1-01)
 - 8 FUTURE TOILET ROOM, NOT IN CONTRACT. SEE PLUMBING FOR ROUGH IN PIPING IN CONTRACT
 - 9 EDGE OF METAL PANEL ABOVE
- WALL TYPE LEGEND:
- LOAD BEARING WALL, SEE STRUCTURAL
 - DRAFT STOP IN JOIST SPACE ABOVE, SEE T / A4-01

4 BIKE RACK SPECIFICATION
SCALE: N.T.S.

NO	DATE	ISSUE DESCRIPTION
2	06/28/21	ISSUED FOR PERMIT
1	05/05/21	ISSUED FOR FOUNDATION PERMIT

COPYRIGHT 2021, SULLIVAN GOULETTE & WILSON, LTD. EXPRESSLY RESERVES ITS COMMON LAW COPYRIGHT AND OTHER PROPERTY RIGHTS IN THESE PLANS. THESE PLANS ARE NOT TO BE REPRODUCED, CHANGED OR COPIED IN ANY FORM OR MANNER WHATSOEVER, NOR ARE THEY TO BE ASSIGNED TO ANY THIRD PARTY, WITHOUT FIRST OBTAINING THE EXPRESS WRITTEN PERMISSION AND CONSENT OF SULLIVAN GOULETTE & WILSON, LTD.

THESE DRAWINGS MAY HAVE BEEN REPRODUCED AT A SIZE DIFFERENTLY THAN ORIGINALLY DRAWN. OWNER AND ARCHITECT ASSUME NO RESPONSIBILITY FOR USE OF INCORRECT SCALE.

CONTRACTOR SHALL VERIFY ALL EXISTING CONDITIONS PRIOR TO PROCEEDING WITH CONSTRUCTION AND NOTIFY ARCHITECT IMMEDIATELY OF ANY DISCREPANCIES OR CONFLICTS.

PRINCIPAL: MS F.M. MA
GC BY: MS, GG DRAWN BY: JF, YY

SULLIVAN
GOULETTE
& WILSON

ARCHITECTS

444 N MICHIGAN AVE
SUITE 1850
CHICAGO, IL 60611
Ph 312.988.7412
Fx 312.988.7409
www.sgwarech.com

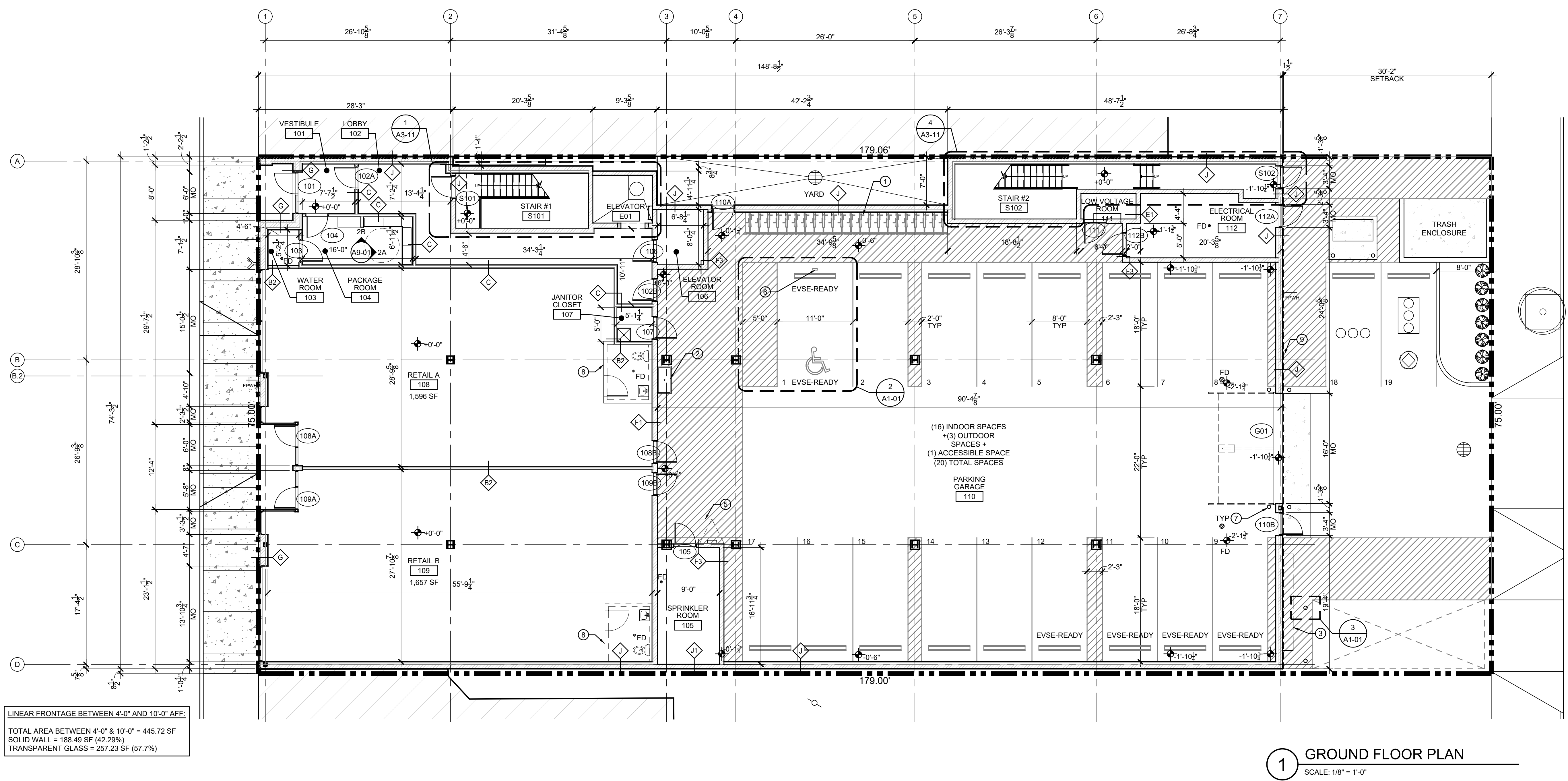
PROFESSIONAL DESIGN FIRM
License Number: 184-001505
Expiration Date: April 30, 2021

3217 N CLARK STREET

CHICAGO, ILLINOIS 60657



GROUND FLOOR PLAN

A1-01



1 GROUND FLOOR PLAN
SCALE: 1/8" = 1'-0"

- ① BIKE STORAGE RACK, SEE 4/A-01
- ② DOG WASH (SEE PLUMBING)
- ③ GAS METERS (SEE MECHANICAL)
- ④ BALCONY
- ⑤ ROOF HATCH
- ⑥ ACCESSIBLE PARKING SIGN
(SEE 2/A-01)
- ⑦ BOLLARD (SEE 3/A-01)
- ⑧ FUTURE TOILET ROOM, NOT IN
CONTRACT. SEE PLUMBING FOR
IN PIPING IN CONTRACT
- ⑨ EDGE OF METAL PANEL ABOVE

	LOAD BEARING WALL, SEE STRUCTURAL
	DRAFT STOP IN JOIST SPACE ABOVE, SEE T / A4-01



COPYRIGHT 2011: SULLIVAN GOULETTE & WILSON, LTD. EXPRESSLY RESERVES ITS COMMON LAW COPYRIGHT AND OTHER PROPERTY RIGHTS IN THESE PLANS. THESE PLANS ARE NOT TO BE REPRODUCED, CHANGED OR COPIED IN ANY FORM OR MANNER WHATSOEVER, NOR ARE THEY TO BE ASSIGNED TO ANY THIRD PARTY, WITHOUT FIRST OBTAINING THE EXPRESSED WRITTEN PERMISSION AND CONSENT OF SULLIVAN GOULETTE & WILSON, LTD.

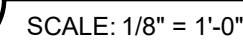
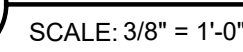
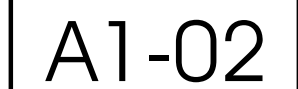
CONTRACTOR SHALL VERIFY ALL EXISTING CONDITIONS PRIOR TO PROCEEDING WITH CONSTRUCTION AND NOTIFY ARCHITECT IMMEDIATELY OF ANY DISCREPANCIES OR CONFLICTS.

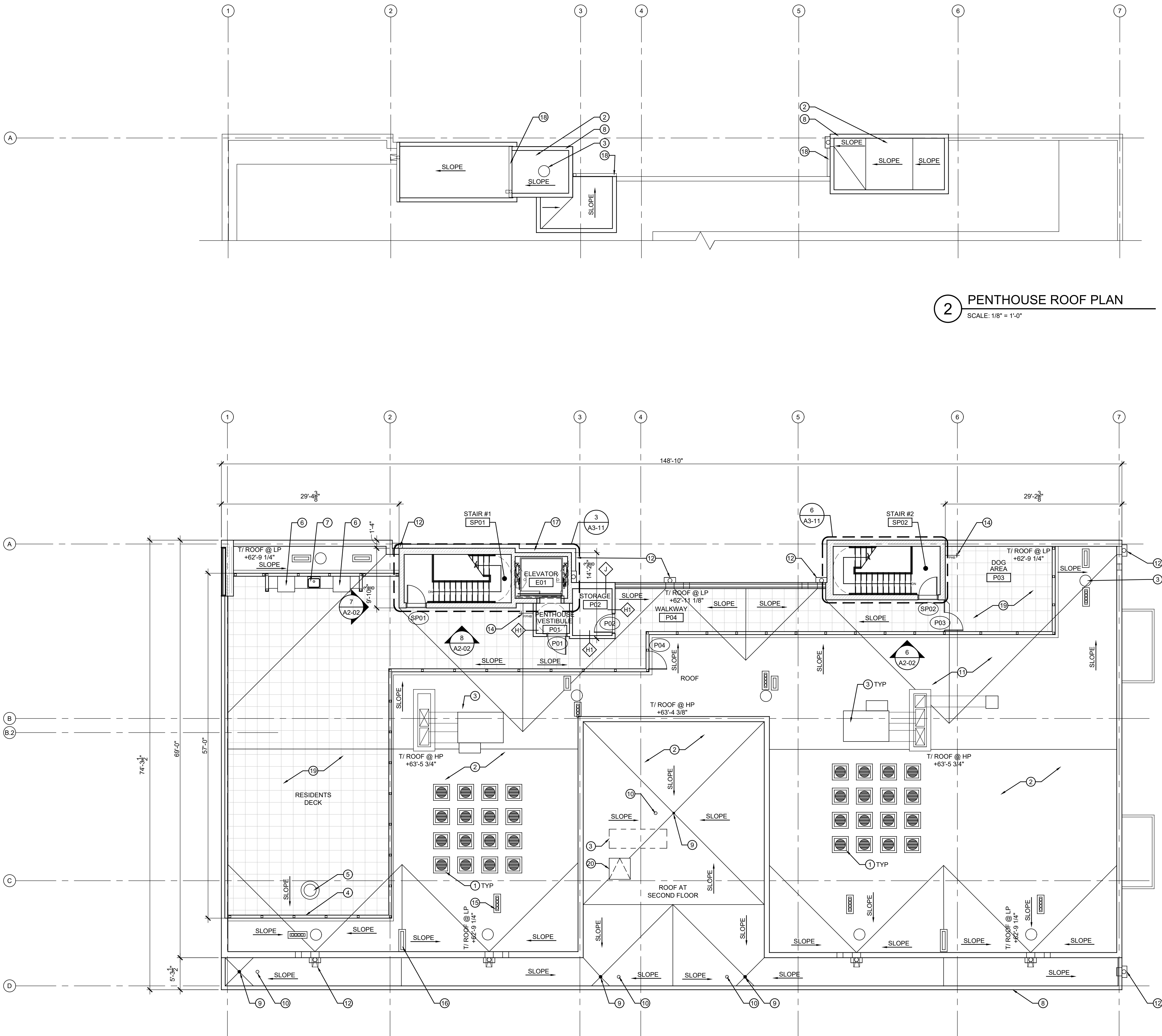
CONTRACTOR SHALL VERIFY ALL EXISTING CONDITIONS PRIOR TO PROCEEDING WITH CONSTRUCTION AND NOTIFY ARCHITECT IMMEDIATELY OF ANY DISCREPANCIES OR CONFLICTS.

PRINCIPAL:	MS	P.M.:	MA
QC BY:	MS, GG	DRAWN BY:	JF, YY

444 N MICHIGAN AVE
SUITE 1850
CHICAGO, IL 60611

SECOND - FIFTH FLOOR PLAN





2 PENTHOUSE ROOF PLAN
SCALE: 1/8" = 1'-0"

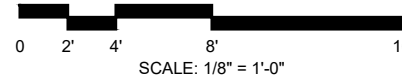
1 ROOF PLAN
SCALE: 1/8" = 1'-0"

ROOF PLAN NOTES

- A. ALL ROOF PENETRATIONS PER MFR STANDARD DETAILS
- B. ALL GAS LINES SHALL BE SUPPORTED ON WOOD BLOCKING AT 4'-0" OC
- C. ROOF SCREENING WILL BE PROVIDED AS REQUIRED BY CODE

ROOF PLAN KEYNOTES:

- 1 CONDENSING UNITS - SEE MECHANICAL PROVIDE ALL REQUIRED ELECTRICAL SERVICE, ALL REQUIRED CURBS AND ROOF PENETRATIONS PROVIDED BY ROOFING CONTRACTOR
- 2 ROOF MEMBRANE
- 3 MECHANICAL EQUIPMENT (SEE MECHANICAL)
- 4 WALL MOUNTED TV
- 5 FIRE PIT
- 6 GRILL
- 7 SINK
- 8 PRE-FINISHED ALUMINUM COPING (SEE ELEVATIONS)
- 9 ROOF DRAIN
- 10 OVERFLOW ROOF DRAIN
- 11 ROOF CRICKET, COUNTER SLOPE AND SADDLES TO SLOPE 1/2" PER 1'-0" MIN
- 12 THRU-WALL SCUPPER TO COLLECTOR BOX AND DOWNSPOUT
- 13 VENT THRU ROOF - SEE PLUMBING
- 14 WALL HYDRANT - SEE PLUMBING
- 15 FURNACE VENTS-SEE MECHANICAL
- 16 DRYER EXHAUST-SEE MECHANICAL
- 17 ROOF DRAIN-RUN HORIZONTALLY TO CONNECT TO DOWNSPOUT
- 18 PRE-FINISHED ALUMINUM GUTTER AND DOWNSPOUT
- 19 PAVER AND PEDESTAL SYSTEM
- 20 ROOF HATCH



2	06/28/21	ISSUED FOR PERMIT
1	05/05/21	ISSUED FOR FOUNDATION PERMIT
NO	DATE	ISSUE DESCRIPTION

COPYRIGHT 2021, SULLIVAN GOULETTE & WILSON, LTD. EXPRESSLY RESERVES ITS COMMON LAW COPYRIGHT AND OTHER PROPERTY RIGHTS IN THESE PLANS. THESE PLANS ARE NOT TO BE REPRODUCED, CHANGED OR COPIED IN ANY FORM OR MANNER WHATSOEVER, NOR ARE THEY TO BE ASSIGNED TO ANY THIRD PARTY, WITHOUT FIRST OBTAINING THE EXPRESSED WRITTEN PERMISSION AND CONSENT OF SULLIVAN GOULETTE & WILSON, LTD.

THESE DRAWINGS MAY HAVE BEEN REPRODUCED AT A SIZE DIFFERENTLY THAN ORIGINALLY DRAWN. OWNER AND ARCHITECT ASSUME NO RESPONSIBILITY FOR USE OF INCORRECT SCALE.

CONTRACTOR SHALL VERIFY ALL EXISTING CONDITIONS PRIOR TO PROCEEDING WITH CONSTRUCTION AND NOTIFY ARCHITECT IMMEDIATELY OF ANY DISCREPANCIES OR CONFLICTS.

PRINCIPAL: MS MS, GG F.M.: MA DRAWN BY: JF, YY

**SULLIVAN
GOULETTE
& WILSON**
ARCHITECTS

444 N MICHIGAN AVE
SUITE 1850
CHICAGO, IL 60611
Ph 312.988.7412
Fx 312.988.7409
www.sgwarch.com

PROFESSIONAL DESIGN FIRM
License Number: 184-001505
Expiration Date: April 30, 2021

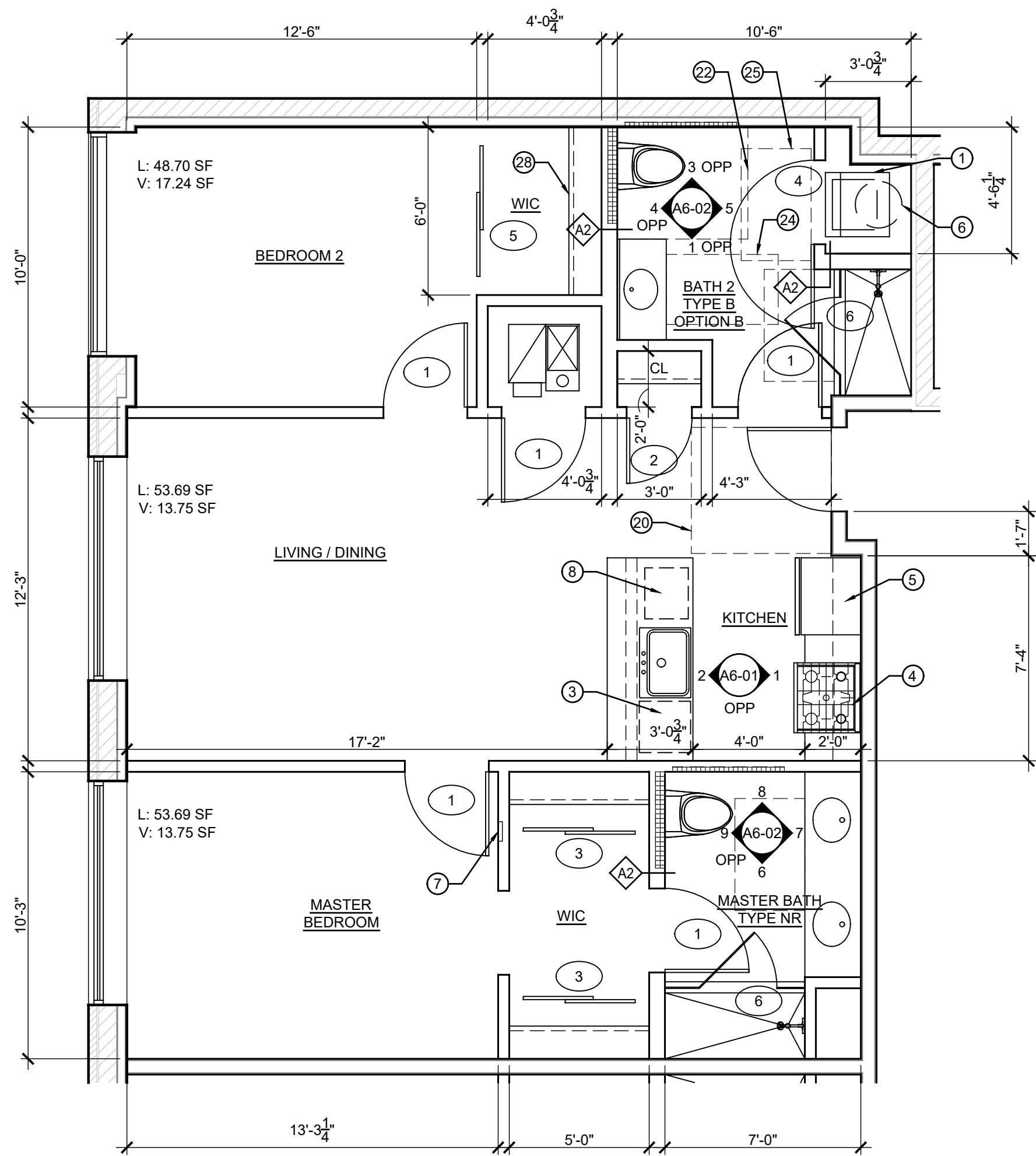
**3217 N CLARK
STREET**

CHICAGO, ILLINOIS 60657

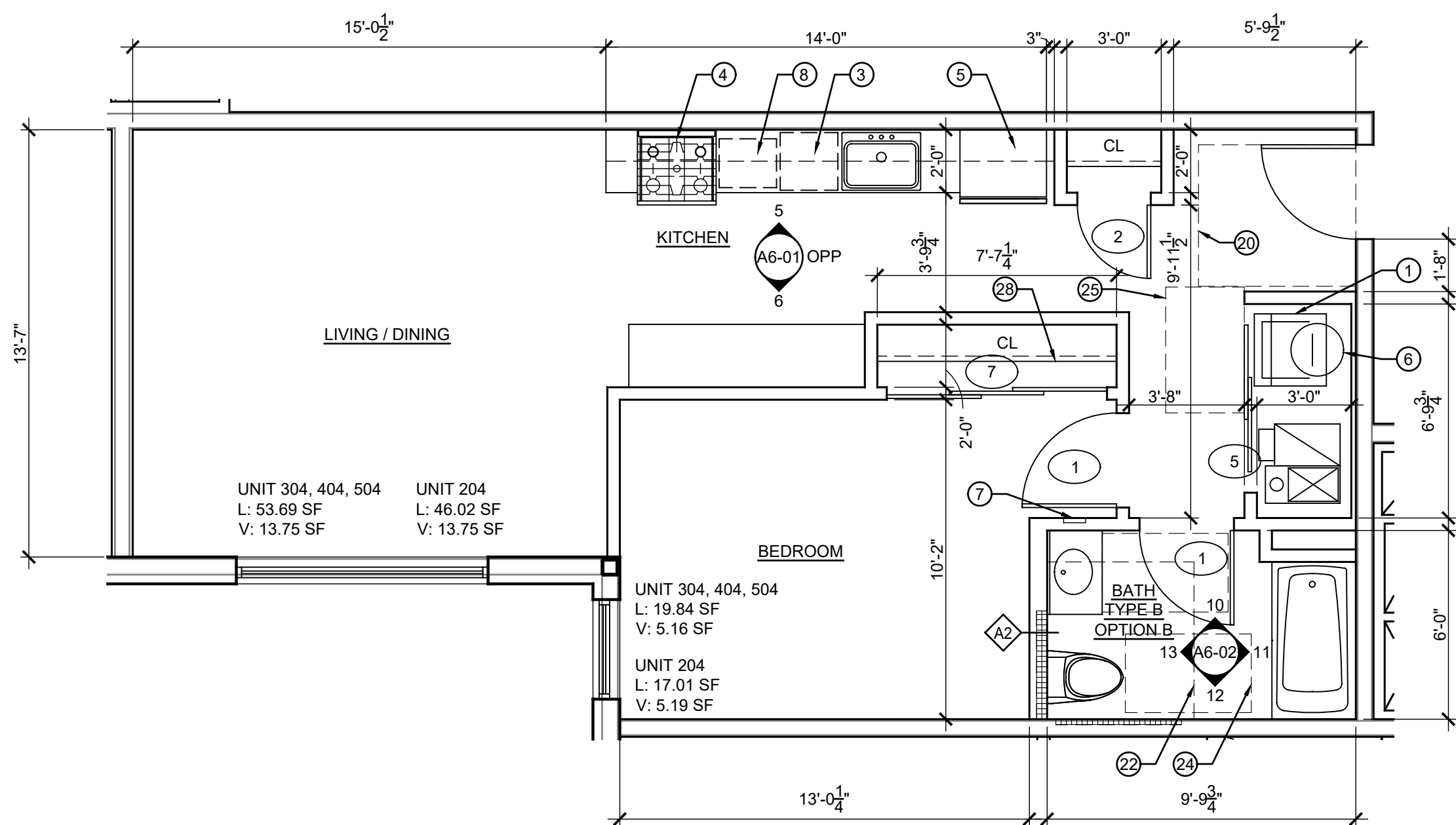
ROOF PLAN



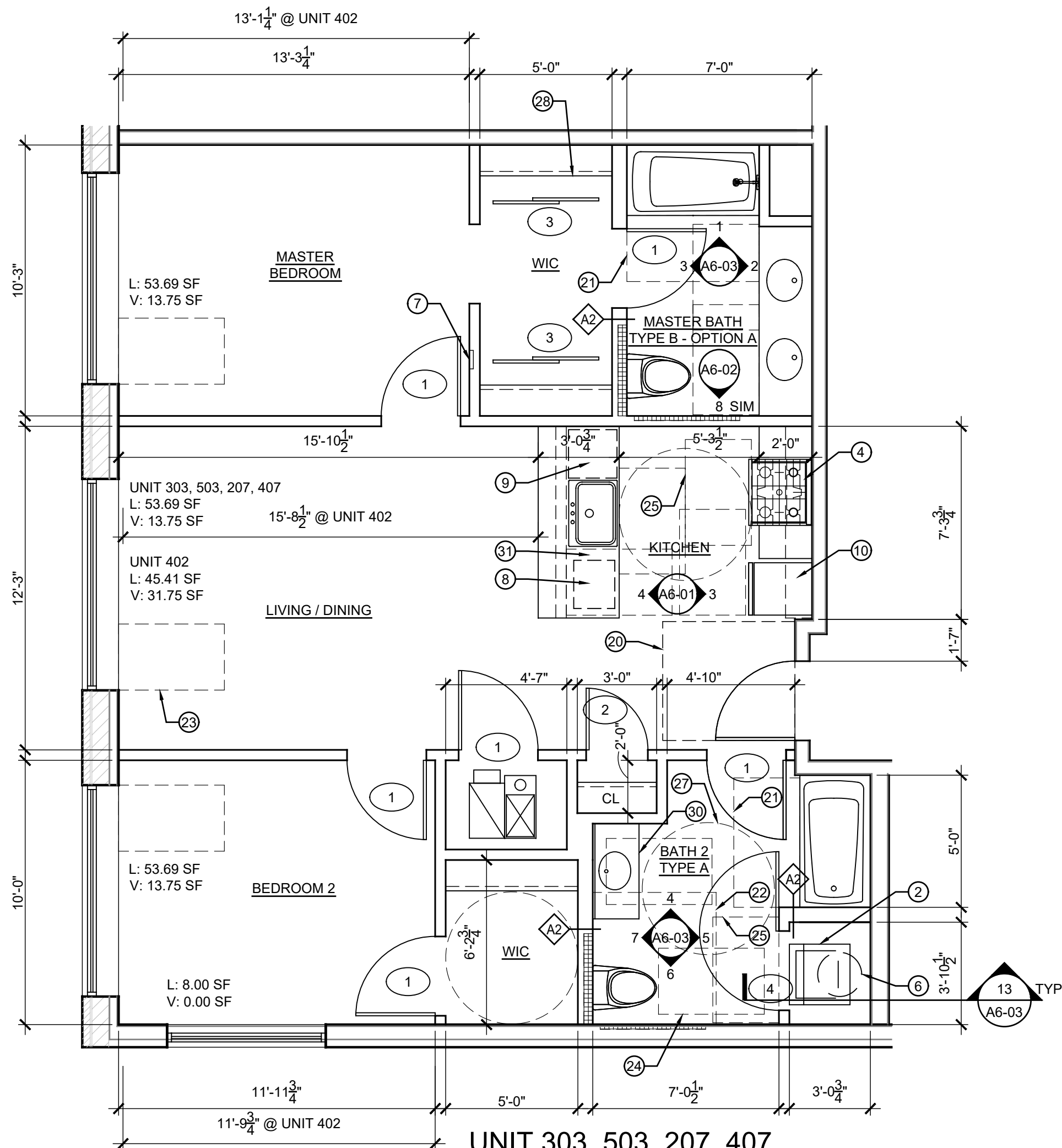
A1-03



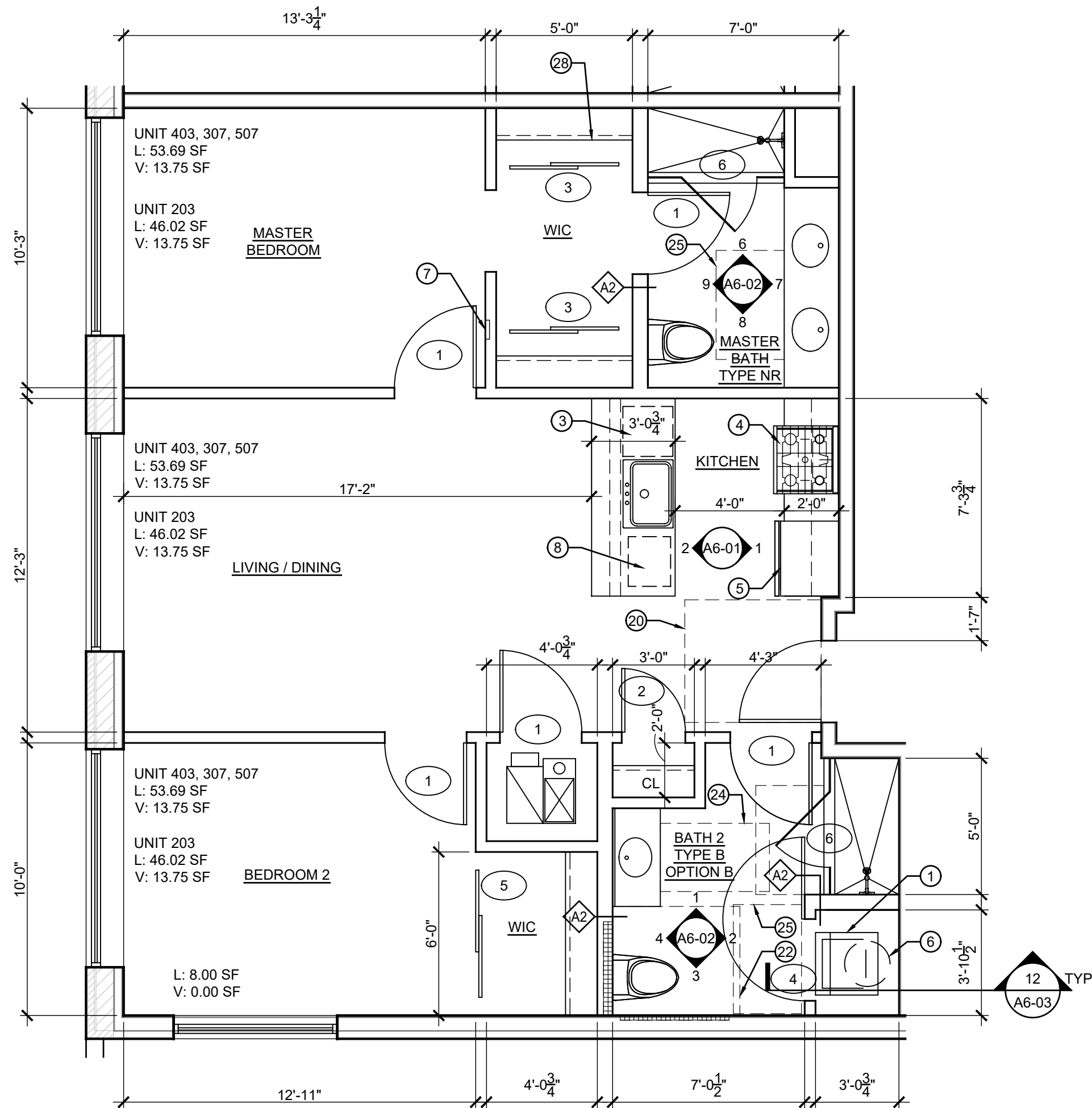
UNIT 208, 308, 408, 508
TYPE B PLAN
SCALE: 1/4" = 1'-0"



UNIT 204, 304, 404, 504
TYPE B PLAN
SCALE: 1/4" = 1'-0"



UNIT 303, 503, 207, 407
402 OPP - TYPE A PLAN
SCALE: 1/4" = 1'-0"



UNIT 203, 403, 307, 507
TYPE B PLAN
SCALE: 1/4" = 1'-0"

GENERAL NOTES:

1. COLUMNS AND WALLS ARE DESIGNATED WITH A TAG WHICH CORRESPONDS TO SHEET A4-1 PROVIDING THE UL # AND FIRE-RATING FOR EACH CONSTRUCTION ASSEMBLY
2. ALL WALLS ARE CONSTRUCTION TYPE 'A' 4 7/8" THICK, UNO
3. DIMENSIONS ARE TO MATERIAL FINISHES, UNO
4. VERIFY ALL WINDOW AND DOOR ROUGH OPENING AND MASONRY OPENING DIMENSIONS WITH OWNER SELECTED MANUFACTURER AND ADJUST ACCORDINGLY
5. ALL DOOR GLAZING SHALL BE TEMPERED
6. PROVIDE BLOCKING AT ALL DOOR AND DECORATIVE TRIM LOCATION. VERIFY WITH OWNER
7. VERIFY ALL PLUMBING ROUGH FRAMING DIMENSIONS WITH THE OWNER SELECTED MANUFACTURER AND ADJUST ACCORDINGLY
8. COORDINATE FLOOR AND ROOF FRAMING LAYOUT WITH PLUMBING AND HVAC WORK TO AVOID POTENTIAL CONFLICTS
9. MECHANICAL CONTRACTORS TO PROVIDE ENGINEERED SHOP DRAWINGS FOR REVIEW AND APPROVAL TO GENERAL CONTRACTOR
10. PROVIDE ROD & SHELF AT ALL CLOSETS. PROVIDE (5) SHELVES EVENLY SPACED AT ALL LINEN CLOSETS AND PANTRY(S), UNO
11. PROVIDE FINISHED END PANELS ON SIDES OF BASE CABINETS AT ALL EXPOSED ENDS INCLUDING AT DISHWASHERS

12. REFER TO SHEET A9-01 FOR LOCATIONS OF BLOCKING, FIXTURES, ACCESSORIES AND CABINETRY DETAILS FOR TYPE 'A' AND TYPE 'B' OPT A BATHROOMS
13. REFER TO SHEET A9-01 FOR FOR HEIGHTS OF COUNTERS AND CABINETRY AND CABINETRY DETAILS FOR TYPE 'A' AND TYPE 'B' KITCHENS
14. REFER TO SHEET A8-01 FOR TYPICAL MOUNTING HEIGHTS, FINISH FLOOR TRANSITION DETAILS, AND THRESHOLD DETAILS

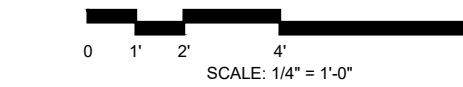
GENERAL FINISH NOTES:

1. ALL INTERIOR WALL AND CEILING FINISHES SHALL BE CLASS 1 FINISH WITH A FLAME SPREAD RATING OF 0-25
 2. ALL FLOOR COVERINGS SHALL HAVE A FLAME SPREAD RATING OF 75 OR BETTER
- FLOOR PLAN KEYNOTES:
NOTE: KEYED NOTES BELOW APPLY TO MULTIPLE SHEETS AND MAY NOT BE APPLICABLE TO THIS SHEET

- ① GE STACKED WASHER/ DRYER - GUD27GSSMWW
- ② LG WHITE COMBINATION WASHER/ DRYER - WM3488HW
- ③ SAMSUNG STAINLESS STEEL DISHWASHER - DW80R5060US/AA
- ④ SAMSUNG STAINLESS STEEL FRONT CONTROL GAS RANGE - NX60T8111SS/AA
- ⑤ SAMSUNG STAINLESS STEEL FRENCH DOOR REFRIGERATOR - RF18A5101SR/AA
- ⑥ WATER HEATER ABOVE
- ⑦ ELECTRICAL PANEL - SEE ELEC DWGS
- ⑧ SAMSUNG STAINLESS STEEL MICROWAVE BELOW COUNTER - MS14K6000AS/AA
- ⑨ SAMSUNG INTEGRATED DIGITAL TOUCH DISHWASHER - DW60R2014US/AA
- ⑩ FRIGIDAIRE BRUSHED STEEL REFRIGERATOR - FFET1222UV

ACCESSIBILITY CLEARANCE NOTES:

- ⑳ 54" x 60" CLEARANCE AT ENTRY TYP.
- ㉑ 30" x 60" BATH APPROACH TYP.
- ㉒ 60" x 56" TOILET CLEARANCE TYP.
- ㉓ ACCESSIBLE OPERABLE WINDOW W/ 30" x 48" FORWARD APPROACH TYP.
- ㉔ 30" x 48" FORWARD APPROACH TYP.
- ㉕ 30" x 48" PARALLEL APPROACH TYP.
- ㉖ 30" WIDE WORK SURFACE W/ 30" x 48" FORWARD APPROACH TYP.
- ㉗ 5' TURNING RADIUS TYP.
- ㉘ ADJUSTABLE ROD AND SHELVES COORDINATE MANUFACTURER WITH OWNER, TYP. AT ALL CLOSET LOCATIONS
- ㉙ ALL CIRCUIT BREAKER CONTROLS TO BE LOCATED BETWEEN 15" - 48" AFF TYP.
- ㉚ SINK CABINET TO BE REMOVABLE FOR 30" x 48" FORWARD APPROACH, EXTEND FINISH FLOORING UNDER SINK.
- ㉛ CABINET TO BE REMOVABLE FOR 30" x 48" FORWARD APPROACH WORK SURFACE, EXTEND FINISH FLOORING UNDER SINK.



NO	DATE	ISSUE DESCRIPTION
2	06/28/21	ISSUED FOR PERMIT
1	05/05/21	ISSUED FOR FOUNDATION PERMIT

COPYRIGHT 2021, SULLIVAN GOULETTE & WILSON, LTD. EXPRESSLY RESERVES ITS COMMON LAW COPYRIGHT AND OTHER PROPERTY RIGHTS IN THESE PLANS. THESE PLANS ARE NOT TO BE REPRODUCED, CHANGED OR COPIED IN ANY FORM OR MANNER WHATSOEVER, NOR ARE THEY TO BE ASSIGNED TO ANY THIRD PARTY, WITHOUT FIRST OBTAINING THE EXPRESS WRITTEN PERMISSION AND CONSENT OF SULLIVAN GOULETTE & WILSON, LTD.

THESE DRAWINGS MAY HAVE BEEN REPRODUCED AT A SIZE DIFFERENTLY THAN ORIGINALLY DRAWN. OWNER AND ARCHITECT ASSUME NO RESPONSIBILITY FOR USE OF INCORRECT SCALE.

CONTRACTOR SHALL VERIFY ALL EXISTING CONDITIONS PRIOR TO PROCEEDING WITH CONSTRUCTION AND NOTIFY ARCHITECT IMMEDIATELY OF ANY DISCREPANCIES OR CONFLICTS.

PRINCIPAL: MS F.M.: MA
GC BY: MS, GG DRAWN BY: JF, YY

**SULLIVAN
GOULETTE
& WILSON**
ARCHITECTS

444 N MICHIGAN AVE
SUITE 1850
CHICAGO, IL 60611
Ph 312.988.7412
Fx 312.988.7409
www.sgwararch.com

PROFESSIONAL DESIGN FIRM
License Number: 184-001505
Expiration Date: April 30, 2021

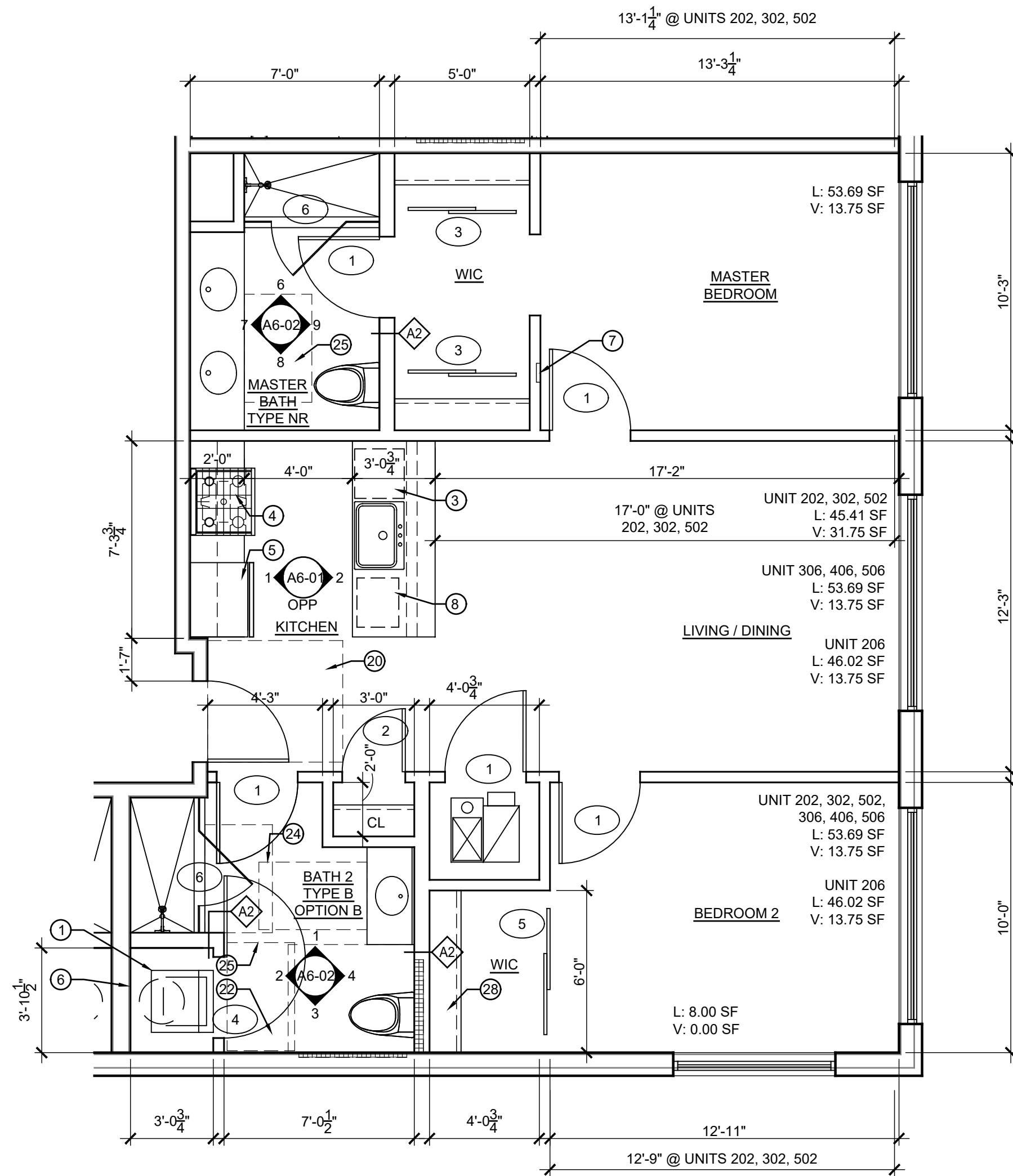
**3217 N CLARK
STREET**

CHICAGO, ILLINOIS 60657

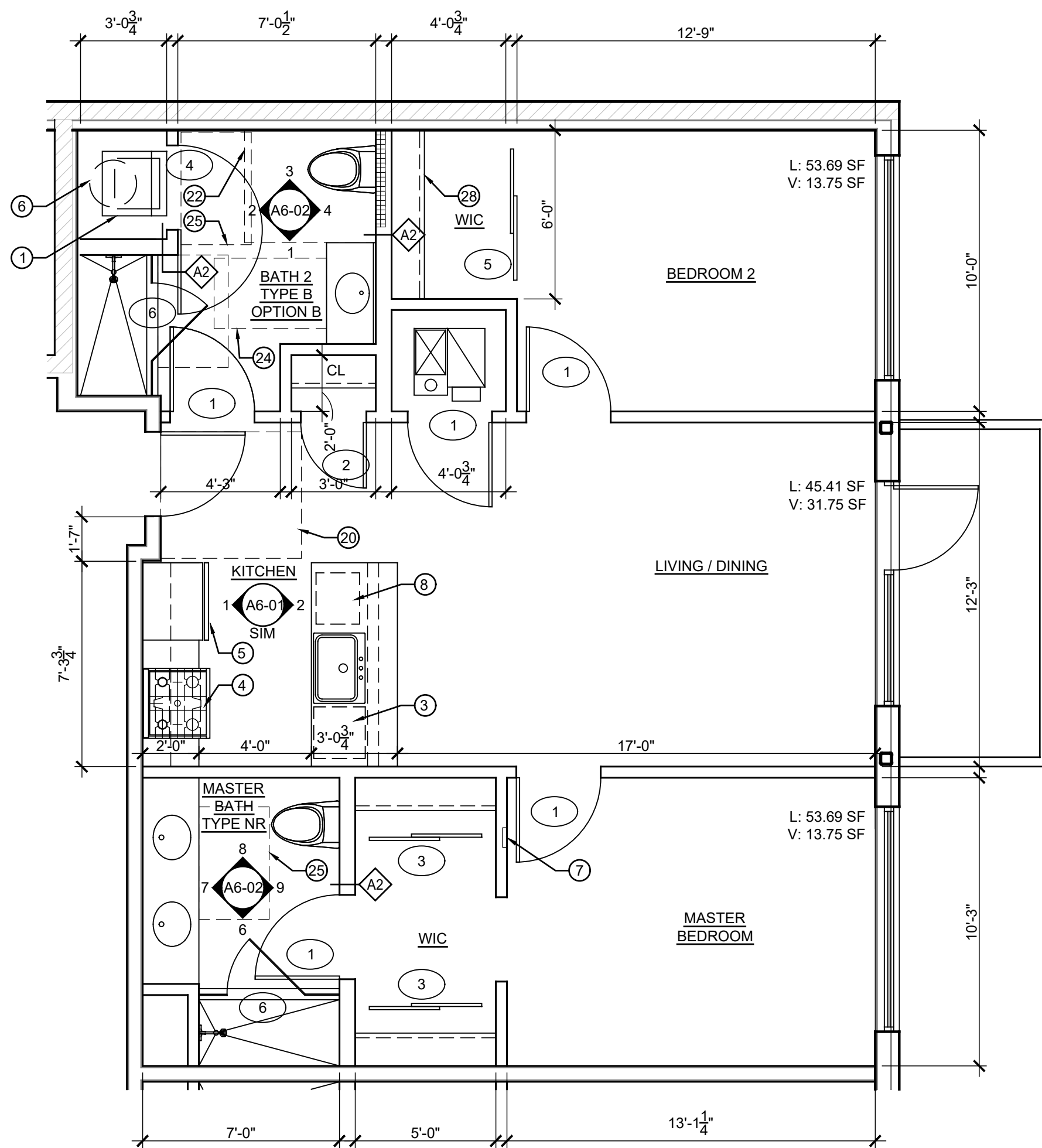
ENLARGED FLOOR PLANS



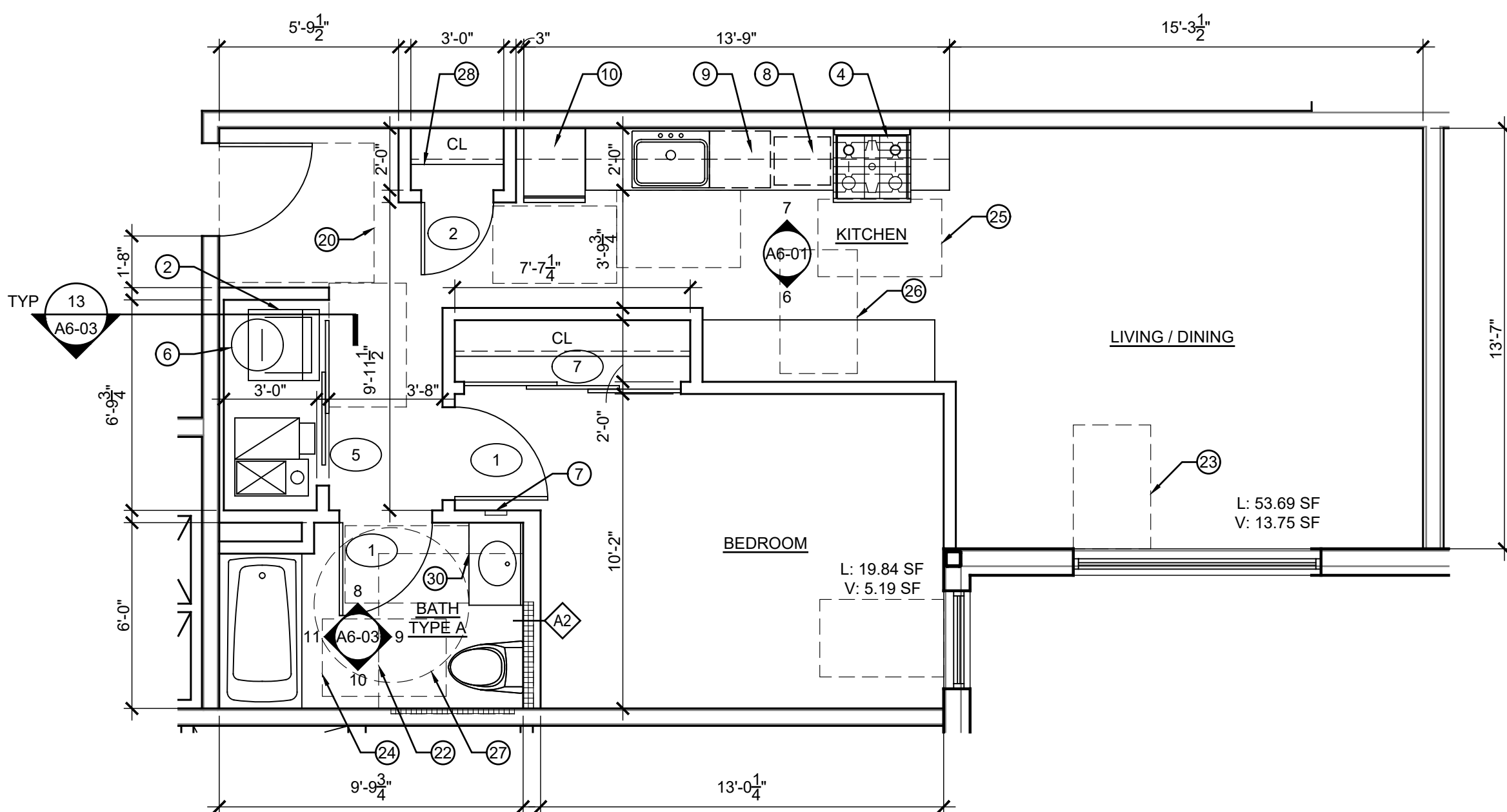
A1-11



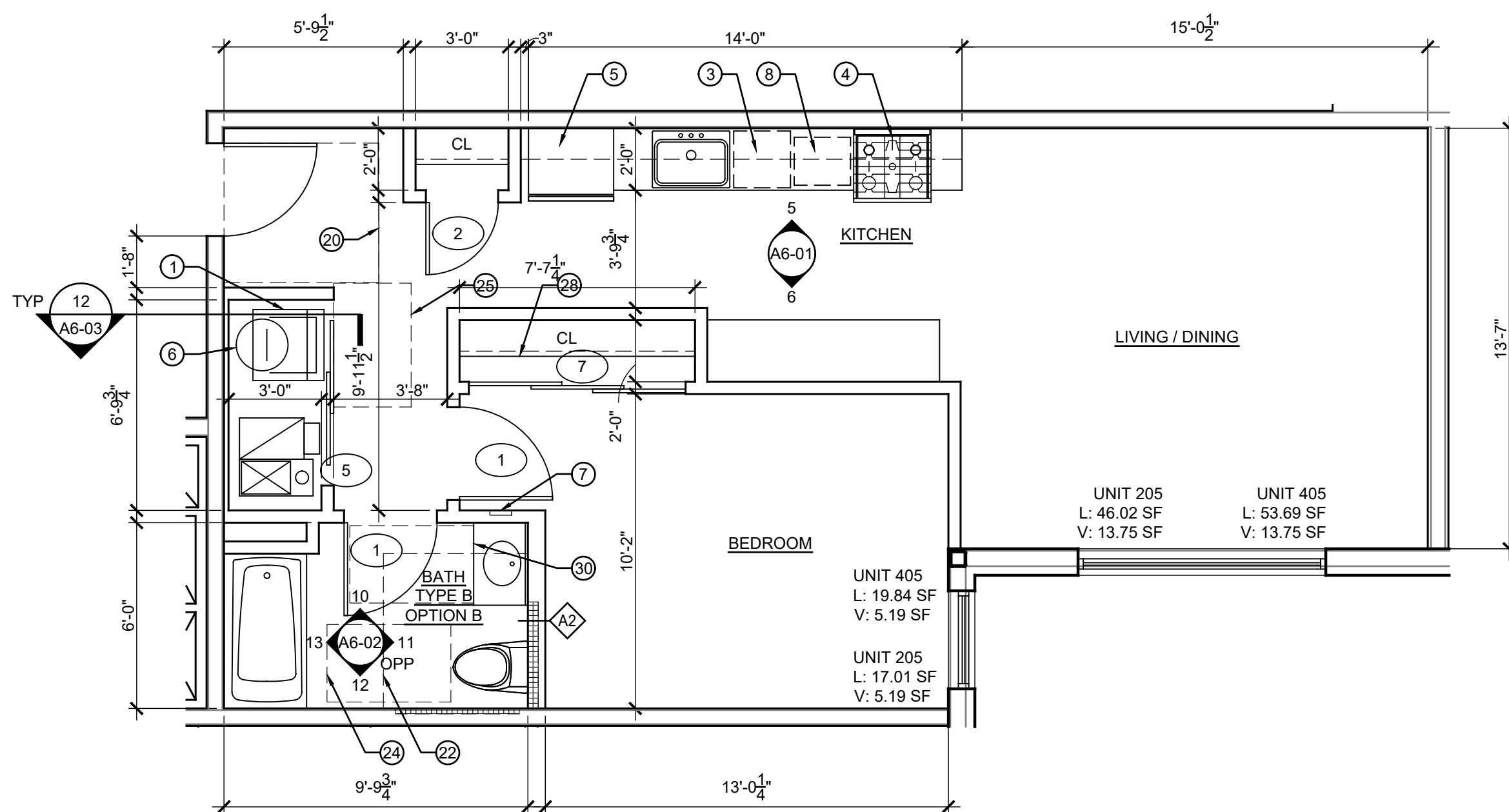
UNIT 202, 302, 502,
206, 306, 406, 506 - TYPE B PLAN
SCALE: 1/4" = 1'-0"



UNIT 201, 301, 401, 501
TYPE B PLAN
SCALE: 1/4" = 1'-0"



UNIT 305, 505
TYPE A PLAN
SCALE: 1/4" = 1'-0"



UNIT 205, 405
TYPE B PLAN
SCALE: 1/4" = 1'-0"

GENERAL NOTES:

1. COLUMNS AND WALLS ARE DESIGNATED WITH A TAG WHICH CORRESPONDS TO SHEET A4-1 PROVIDING THE UL # AND FIRE-RATING FOR EACH CONSTRUCTION ASSEMBLY
2. ALL WALLS ARE CONSTRUCTION TYPE 'A' 4 7/8" THICK, UNO
3. DIMENSIONS ARE TO MATERIAL FINISHES, UNO
4. VERIFY ALL WINDOW AND DOOR ROUGH OPENING AND MASONRY OPENING DIMENSIONS WITH OWNER SELECTED MANUFACTURER AND ADJUST ACCORDINGLY
5. ALL DOOR GLAZING SHALL BE TEMPERED
6. PROVIDE BLOCKING AT ALL DOOR AND DECORATIVE TRIM LOCATION. VERIFY WITH OWNER
7. VERIFY ALL PLUMBING ROUGH FRAMING DIMENSIONS WITH THE OWNER SELECTED MANUFACTURER AND ADJUST ACCORDINGLY
8. COORDINATE FLOOR AND ROOF FRAMING LAYOUT WITH PLUMBING AND HVAC WORK TO AVOID POTENTIAL CONFLICTS
9. MECHANICAL CONTRACTORS TO PROVIDE ENGINEERED SHOP DRAWINGS FOR REVIEW AND APPROVAL TO GENERAL CONTRACTOR
10. PROVIDE ROD & SHELF AT ALL CLOSETS. PROVIDE (5) SHELVES EVENLY SPACED AT ALL LINEN CLOSETS AND PANTRY(S), UNO
11. PROVIDE FINISHED END PANELS ON SIDES OF BASE CABINETS AT ALL EXPOSED ENDS INCLUDING AT DISHWASHERS

12. REFER TO SHEET A9-01 FOR LOCATIONS OF BLOCKING, FIXTURES, ACCESSORIES AND CABINETRY DETAILS FOR TYPE 'A' AND TYPE 'B' OPT A BATHROOMS
13. REFER TO SHEET A9-01 FOR FOR HEIGHTS OF COUNTERS AND CABINETRY AND CABINETRY DETAILS FOR TYPE 'A' AND TYPE 'B' KITCHENS
14. REFER TO SHEET A9-01 FOR TYPICAL MOUNTING HEIGHTS, FINISH FLOOR TRANSITION DETAILS, AND THRESHOLD DETAILS

GENERAL FINISH NOTES:

1. ALL INTERIOR WALL AND CEILING FINISHES SHALL BE CLASS 1 FINISH WITH A FLAME SPREAD RATING OF 0-25
 2. ALL FLOOR COVERINGS SHALL HAVE A FLAME SPREAD RATING OF 75 OR BETTER
- FLOOR PLAN KEYNOTES:**
NOTE: KEYED NOTES BELOW APPLY TO MULTIPLE SHEETS AND MAY NOT BE APPLICABLE TO THIS SHEET

- ① GE STACKED WASHER/ DRYER - GUD27GSSMWW
- ② LG WHITE COMBINATION WASHER/ DRYER - WM3488HW
- ③ SAMSUNG STAINLESS STEEL DISHWASHER - DW80R5060US/AA
- ④ SAMSUNG STAINLESS STEEL FRONT CONTROL GAS RANGE - NX60T8111SS/AA
- ⑤ SAMSUNG STAINLESS STEEL FRENCH DOOR REFRIGERATOR - RF18A5101SR/AA
- ⑥ WATER HEATER ABOVE
- ⑦ ELECTRICAL PANEL - SEE ELEC DWGS
- ⑧ SAMSUNG STAINLESS STEEL MICROWAVE BELOW COUNTER - MS14K6000AS/AA
- ⑨ SAMSUNG INTEGRATED DIGITAL TOUCH DISHWASHER - DW60R2014US/AA
- ⑩ FRIGIDAIRE BRUSHED STEEL REFRIGERATOR - FFET1222UV

ACCESSIBILITY CLEARANCE NOTES:

- ⑩ 54" x 60" CLEARANCE AT ENTRY TYP.
- ⑪ 30" x 60" BATH APPROACH TYP.
- ⑫ 60" x 56" TOILET CLEARANCE TYP.
- ⑬ ACCESSIBLE OPERABLE WINDOW W/ 30" x 48" FORWARD APPROACH TYP.
- ⑭ 30" x 48" FORWARD APPROACH TYP.
- ⑮ 30" x 48" PARALLEL APPROACH TYP.
- ⑯ 30" WIDE WORK SURFACE W/ 30" x 48" FORWARD APPROACH TYP.
- ⑰ 5" TURNING RADIUS TYP.
- ⑱ ADJUSTABLE ROD AND SHELVES COORDINATE MANUFACTURER WITH OWNER, TYP. AT ALL CLOSET LOCATIONS
- ⑲ ALL CIRCUIT BREAKER CONTROLS TO BE LOCATED BETWEEN 15" - 48" AFF TYP.
- ⑳ SINK CABINET TO BE REMOVABLE FOR 30" x 48" FORWARD APPROACH, EXTEND FINISH FLOORING UNDER SINK.
- ㉑ CABINET TO BE REMOVABLE FOR 30" x 48" FORWARD APPROACH WORK SURFACE, EXTEND FINISH FLOORING UNDER SINK.

0 1 2 3 4 5
SCALE: 1/4" = 1'-0"

STATE OF ILLINOIS
MARK J. SULLIVAN
001-013238
LICENSED ARCHITECT

2	06/28/21	ISSUED FOR PERMIT
1	05/05/21	ISSUED FOR FOUNDATION PERMIT
NO	DATE	ISSUE DESCRIPTION

COPYRIGHT 2021, SULLIVAN GOULETTE & WILSON, LTD. EXPRESSLY RESERVES ITS COMMON LAW COPYRIGHT AND OTHER PROPRIETARY RIGHTS IN THESE PLANS. THESE PLANS ARE NOT TO BE REPRODUCED, CHANGED OR COPIED IN ANY FORM OR MANNER WHATSOEVER, NOR ARE THEY TO BE ASSIGNED TO ANY THIRD PARTY, WITHOUT FIRST OBTAINING THE EXPRESSED WRITTEN PERMISSION AND CONSENT OF SULLIVAN GOULETTE & WILSON, LTD.

THESE DRAWINGS MAY HAVE BEEN REPRODUCED AT A SIZE DIFFERENT FROM ORIGINALLY DRAWN. OWNER AND ARCHITECT ASSUME NO RESPONSIBILITY FOR USE OF INCORRECT SCALE.

CONTRACTOR SHALL VERIFY ALL EXISTING CONDITIONS PRIOR TO PROCEEDING WITH CONSTRUCTION AND NOTIFY ARCHITECT IMMEDIATELY OF ANY DISCREPANCIES OR CONFLICTS.

PRINCIPAL: MS
GC BY: MS, GG

F.M.: MA
DRAWN BY: JF, YY

SULLIVAN
GOULETTE
& WILSON
ARCHITECTS

444 N MICHIGAN AVE
SUITE 1850
CHICAGO, IL 60611
Ph 312.988.7412
Fx 312.988.7409
www.sgwarch.com

PROFESSIONAL DESIGN FIRM
License Number: 184-001505
Expiration Date: April 30, 2021

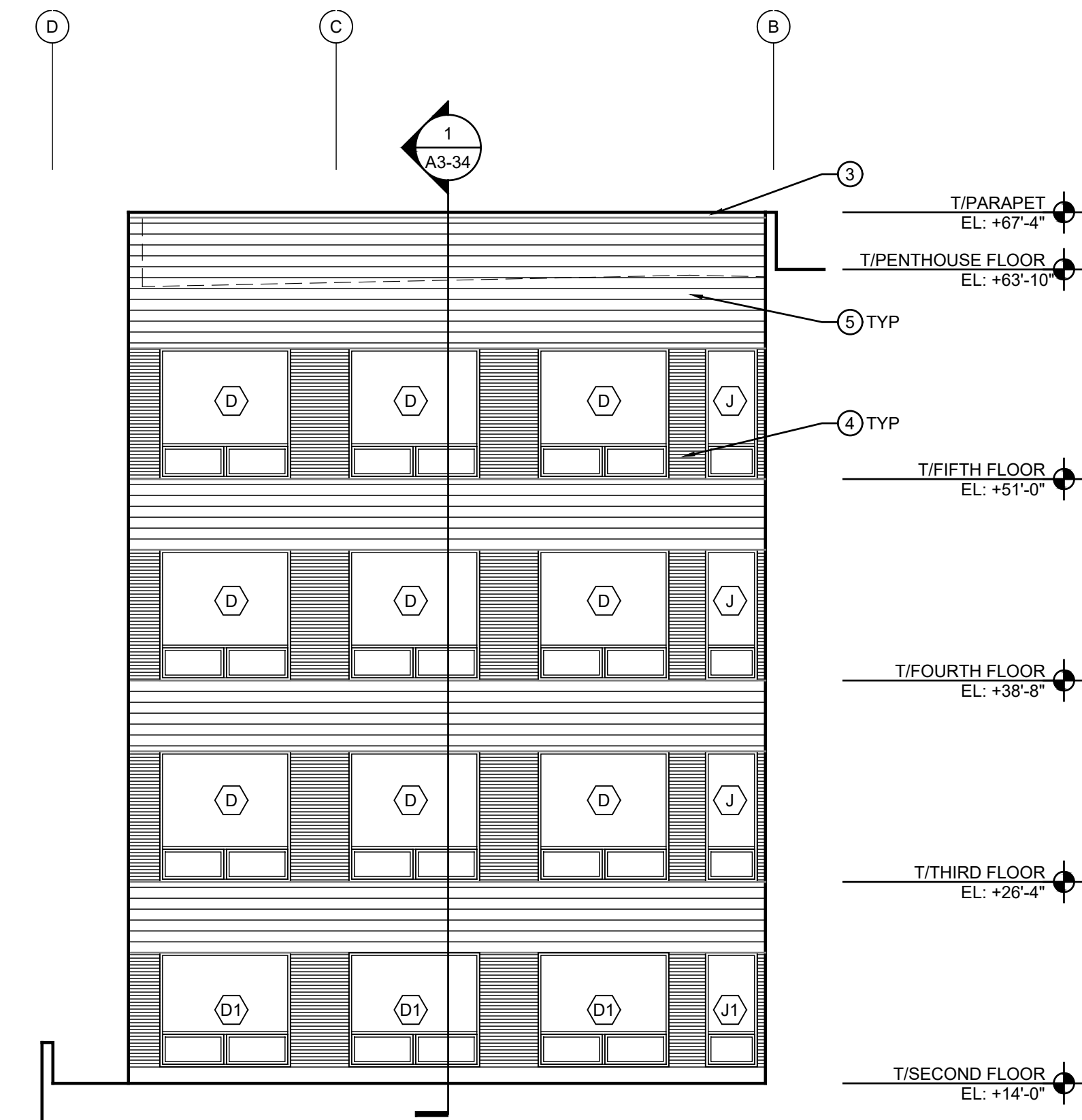
3217 N CLARK STREET

CHICAGO, ILLINOIS 60657

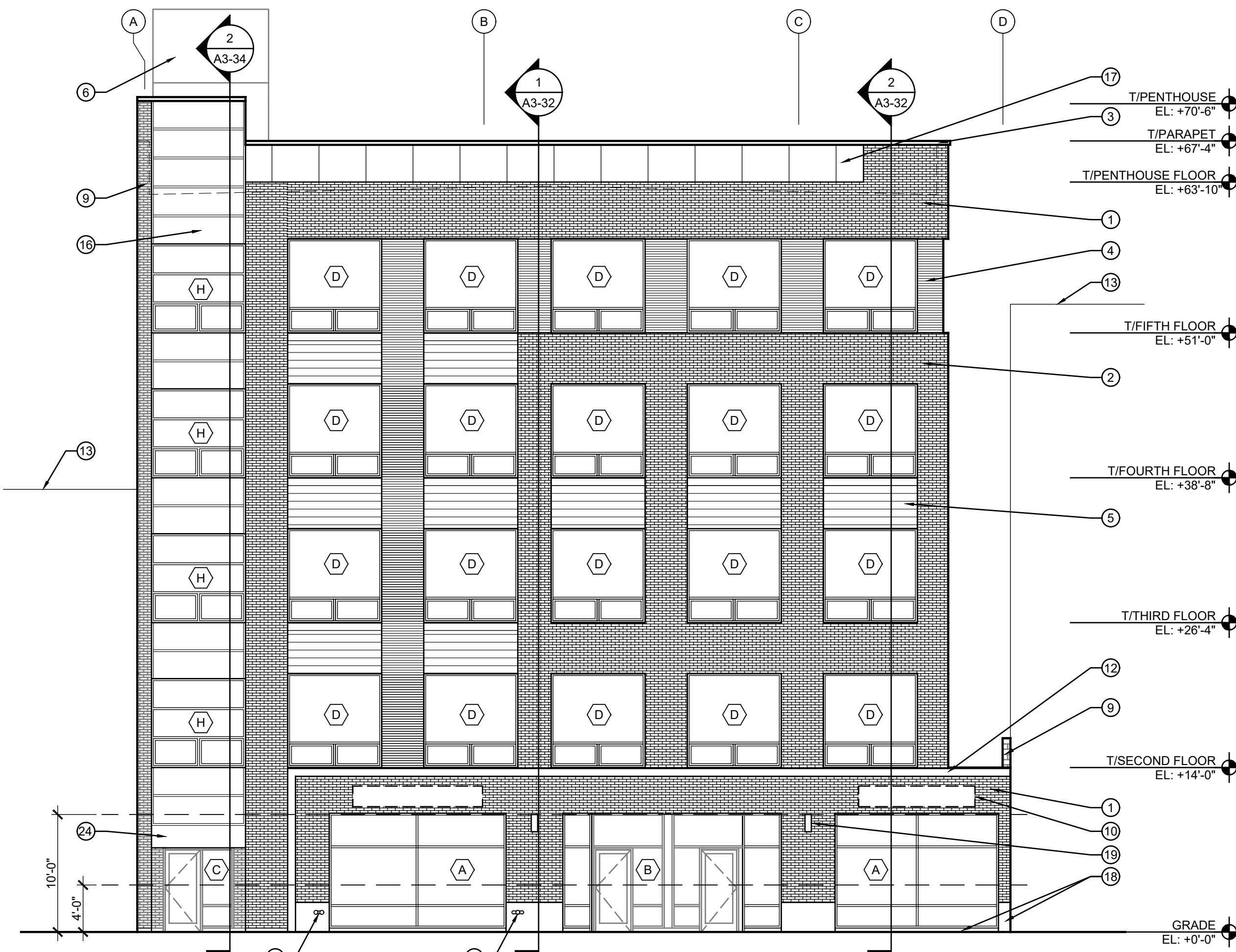
ENLARGED FLOOR PLANS

NORTH

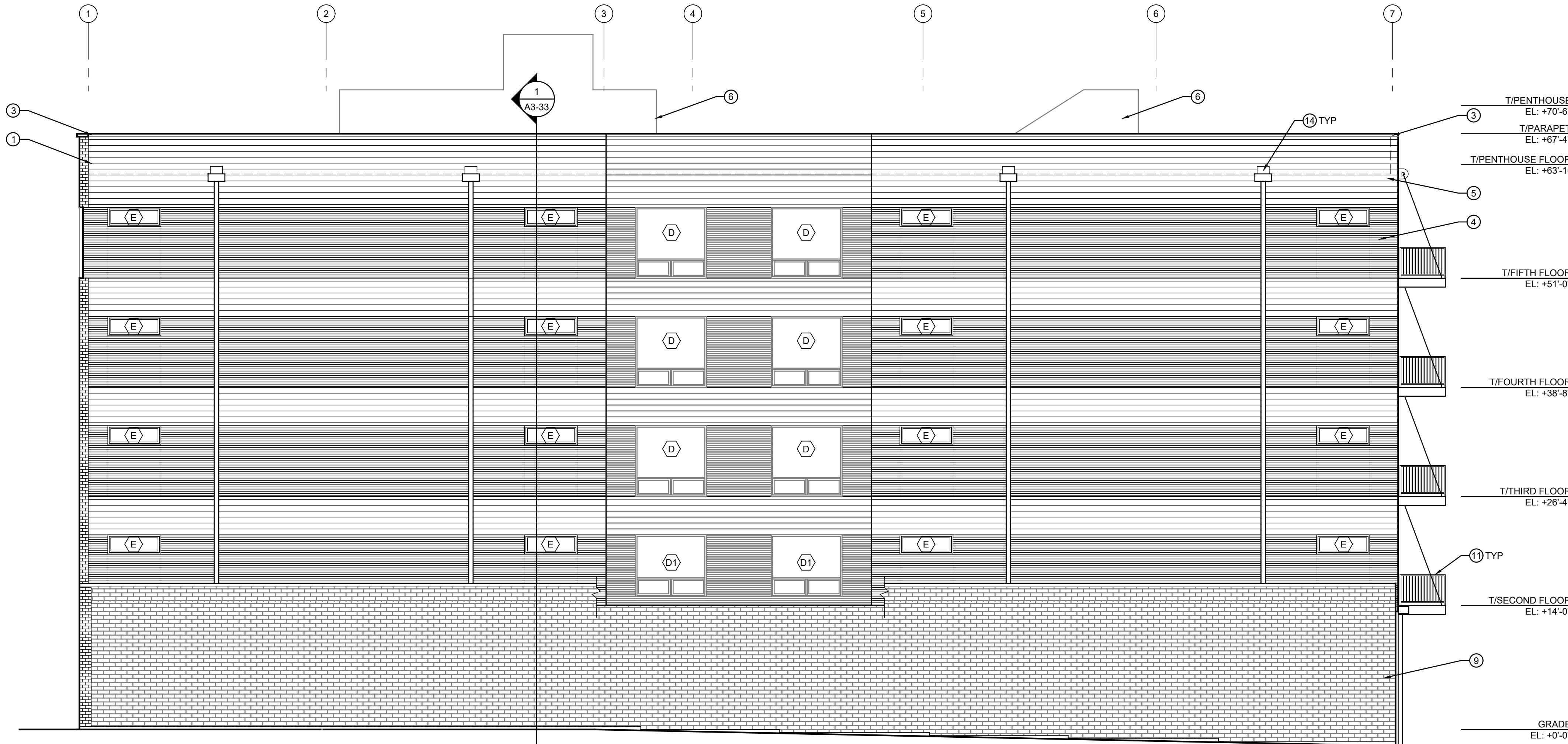
A1-12



3 COURTYARD EAST ELEVATION
SCALE: 1/8" = 1'-0"



2 WEST ELEVATION
SCALE: 1/8" = 1'-0"



1 SOUTH ELEVATION
SCALE: 1/8" = 1'-0"

GENERAL ELEVATION NOTES:

PROVIDE STAINLESS STEEL ANCHORS AND ATTACHMENTS OF TYPE AND SIZE REQUIRED TO SUPPORT THE STONEWORK

COATINGS OF EITHER CEMENTITIOUS WATERPROOF STONE BACKING OR BITUMINOUS DAMP-PROOFING SHALL BE APPLIED ON BACKS, BEDS, AND JOINTS OF ALL STONE USED AT GRADE. DAMP-PROOF ALL ADJACENT CONCRETE SURFACES ON WHICH LIMESTONE WILL REST, INCLUDING CONCRETE OR CMU HAUNCHES AND LEDGES, AS WELL AS SUPPORT ANGLES

PROVIDE LIQUID COLD APPLIED ELASTOMERIC WATERPROOF COATING TO EXTERIOR FACE OF CMU IN STONE VENEER WALLS

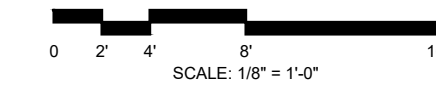
NUMBER IN PARENTHESES DENOTES PROJECTION OF MATERIAL FROM PLAN AS SHOWN IN PLANE (EXTERIOR FACE OF FOUNDATION WALL)

PROVIDE MASONRY CONTROL JOINTS PER ELEVATIONS AND NOT MORE THAN 25' OC MAXIMUM

MATERIAL LEGEND:

NOTE: KEYED NOTES BELOW APPLY TO MULTIPLE SHEETS AND MAY NOT BE APPLICABLE TO THIS SHEET

- FACE BRICK - BLACK IRON SPOT, MODULAR SIZE
- FACE BRICK - LIGHT GRAY, MODULAR SIZE
- PREFINISHED ALUMINUM COPING, COLOR: MATCH MBCI SLATE GRAY
- CORRUGATED METAL PANEL - MBCI - SLATE GRAY
- 7.2 METAL PANEL - MBCI - TUNDRA GRAY
- STAIR & ELEVATOR OVER RUN - SEE SHEET A2-02
- GARAGE DOOR
- SERVICE DOOR
- STRUCTURAL BRICK, BLACK IRON SPOT, 4 X 16 X 8
- SIGNAGE LOCATION, SIGNAGE N.I.C.
- STEEL BALCONIES WITH STEEL GUARDRAILS
- STEEL CHANNEL
- LINE OF EXISTING ADJACENT BUILDING
- PREFINISHED ALUMINUM COLLECTOR BOX AND DOWNSPOUT, MATCH MBCI SLATE GRAY
- LOUVER-SEE MECHANICAL. COLOR: MATCH MBCI SLATE GRAY, SEE 6 / A5-04
- SPANDREL PANEL
- GLASS RAILING
- GRANITE BASE
- LIGHT FIXTURE - SEE ELECTRICAL.
- EMERGENCY LIGHT - SEE ELECTRICAL
- PRE-FINISHED ALUMINUM GUTTER
- WALL HYDRANT
- FIRE DEPARTMENT CONNECTION - SEE PLUMBING
- ACRYLIC SIGNAGE, BY OTHERS



NO	DATE	ISSUE DESCRIPTION
2	06/28/21	ISSUED FOR PERMIT
1	05/05/21	ISSUED FOR FOUNDATION PERMIT

COPYRIGHT 2021: SULLIVAN GOULETTE & WILSON, LTD. EXPRESSLY RESERVES ITS COMMON LAW COPYRIGHT AND OTHER PROPERTY RIGHTS IN THESE PLANS. THESE PLANS ARE NOT TO BE REPRODUCED, CHANGED OR COPIED IN ANY FORM OR MANNER WHATSOEVER, NOR ARE THEY TO BE ASSIGNED TO ANY THIRD PARTY, WITHOUT FIRST OBTAINING THE EXPRESS WRITTEN PERMISSION AND CONSENT OF SULLIVAN GOULETTE & WILSON, LTD.

THESE DRAWINGS MAY HAVE BEEN REPRODUCED AT A SIZE DIFFERENTLY THAN ORIGINALLY DRAWN. OWNER AND ARCHITECT ASSUME NO RESPONSIBILITY FOR USE OF INCORRECT SCALE.

CONTRACTOR SHALL VERIFY ALL EXISTING CONDITIONS PRIOR TO PROCEEDING WITH CONSTRUCTION AND NOTIFY ARCHITECT IMMEDIATELY OF ANY DISCREPANCIES OR CONFLICTS.

PRINCIPAL: MS MS, GG F.M.: MA DRAWN BY: JF, YY

**SULLIVAN
GOULETTE
& WILSON**
ARCHITECTS

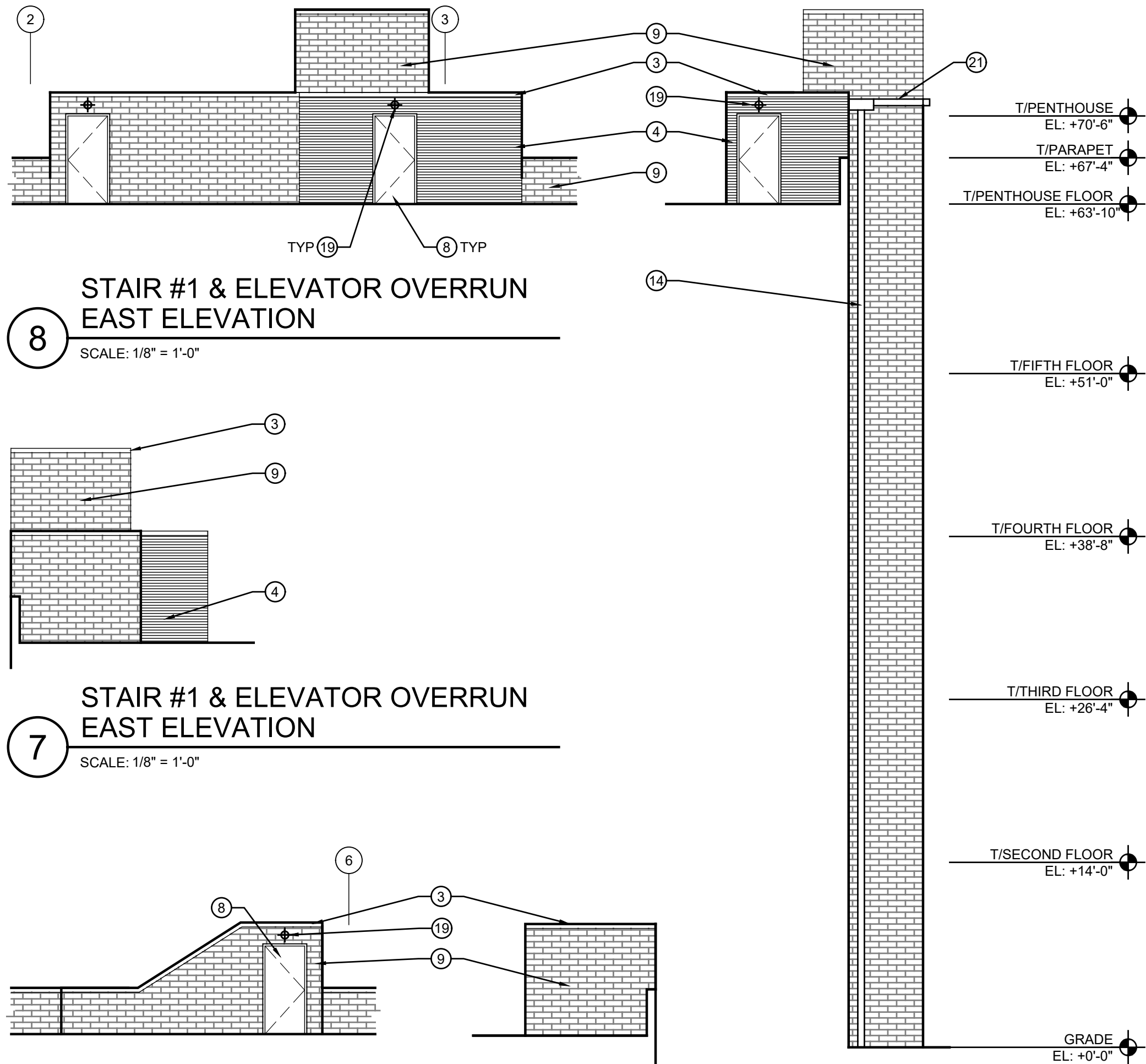
444 N MICHIGAN AVE
SUITE 1850
CHICAGO, IL 60611
Ph 312.988.7412
Fx 312.988.7409
www.sgwarth.com

PROFESSIONAL DESIGN FIRM
License Number: 184-001505
Expiration Date: April 30, 2021

**3217 N CLARK
STREET**

CHICAGO, ILLINOIS 60657

EXTERIOR ELEVATIONS



8
STAIR #1 & ELEVATOR OVERRUN
EAST ELEVATION
SCALE: 1/8" = 1'-0"

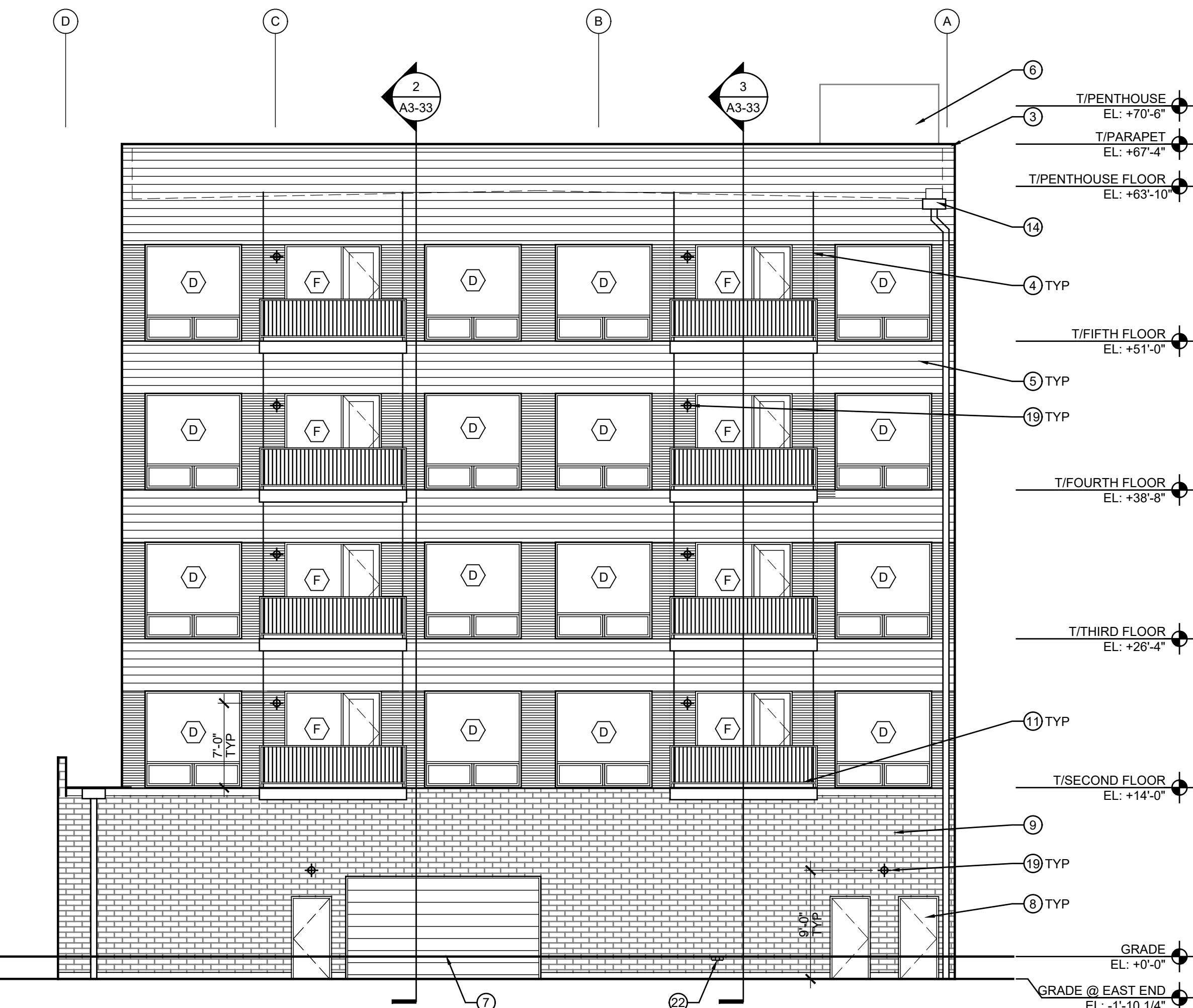
7
STAIR #1 & ELEVATOR OVERRUN
EAST ELEVATION
SCALE: 1/8" = 1'-0"

6
STAIR #2 OVERRUN
SOUTH ELEVATION
SCALE: 1/8" = 1'-0"

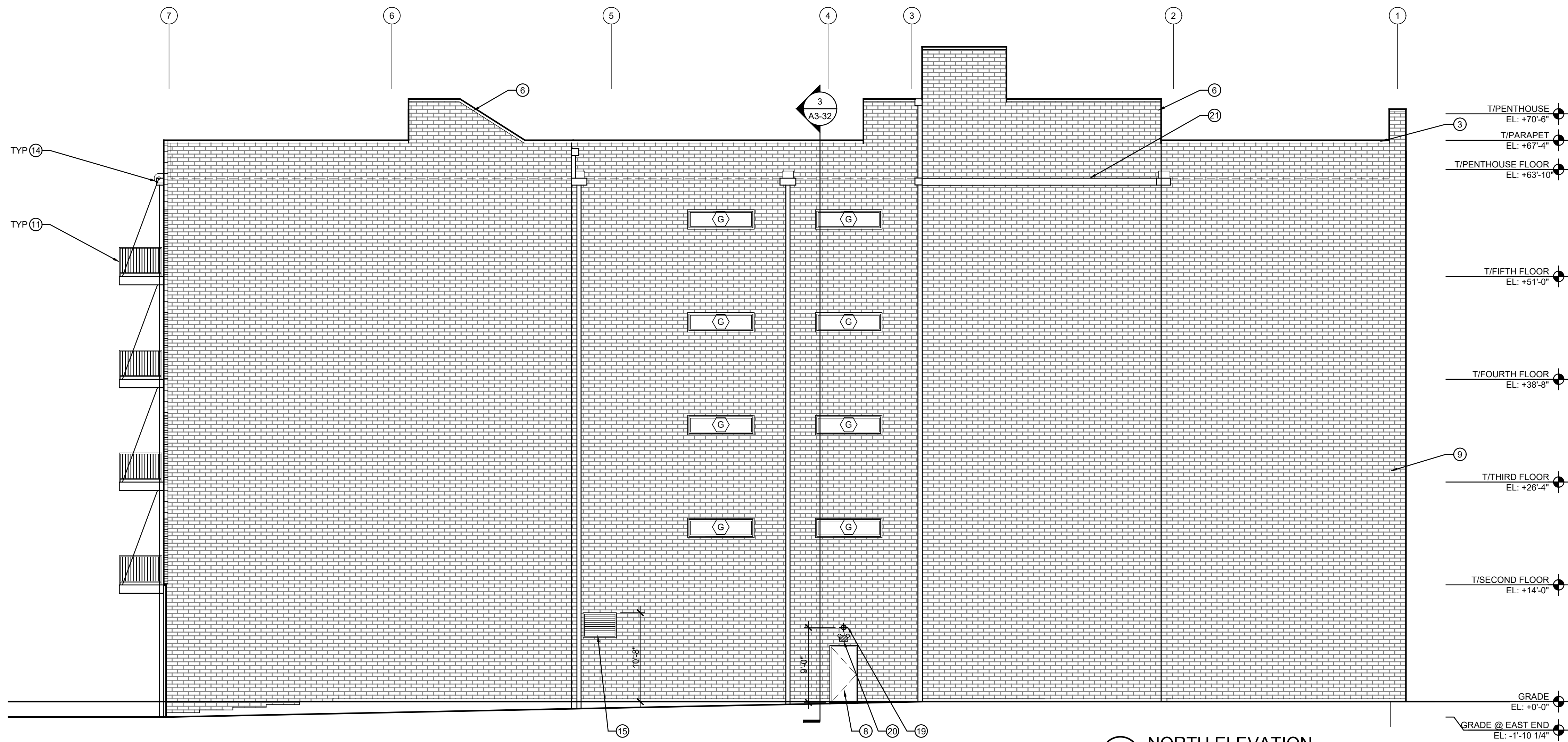
5
STAIR #2 OVERRUN
EAST ELEVATION
SCALE: 1/8" = 1'-0"

4
LIGHTWELL
EAST ELEVATION
SCALE: 1/8" = 1'-0"

3
LIGHTWELL
WEST ELEVATION
SCALE: 1/8" = 1'-0"



2
EAST ELEVATION
SCALE: 1/8" = 1'-0"



1
NORTH ELEVATION
SCALE: 1/8" = 1'-0"

GENERAL ELEVATION NOTES:

PROVIDE STAINLESS STEEL ANCHORS AND ATTACHMENTS OF TYPE AND SIZE REQUIRED TO SUPPORT THE STONework

COATINGS OF EITHER CEMENTITIOUS WATERPROOF STONE BACKING OR BITUMINOUS DAMP-PROOFING SHALL BE APPLIED ON BACKS, BEDS, AND JOINTS OF ALL STONE USED AT GRADE. DAMP-PROOF ALL ADJACENT CONCRETE SURFACES ON WHICH LIMESTONE WILL REST, INCLUDING CONCRETE OR CMU HAUNCHES AND LEDGES, AS WELL AS SUPPORT ANGLES

PROVIDE LIQUID COLD APPLIED ELASTOMERIC WATERPROOF COATING TO EXTERIOR FACE OF CMU IN STONE VENEER WALLS

NUMBER IN PARENTHESES DENOTES PROJECTION OF MATERIAL FROM PLAN AS SHOWN IN PLANE (EXTERIOR FACE OF FOUNDATION WALL)

PROVIDE MASONRY CONTROL JOINTS PER ELEVATIONS AND NOT MORE THAN 25' OC MAXIMUM

MATERIAL LEGEND:

NOTE: KEYED NOTES BELOW APPLY TO MULTIPLE SHEETS AND MAY NOT BE APPLICABLE TO THIS SHEET

- 1 FACE BRICK - BLACK IRON SPOT, MODULAR SIZE
- 2 FACE BRICK - LIGHT GRAY, MODULAR SIZE
- 3 PREFINISHED ALUMINUM COPING, COLOR: MATCH MBCI SLATE GRAY
- 4 CORRUGATED METAL PANEL - MBCI - SLATE GRAY
- 5 7.2 METAL PANEL - MBCI - TUNDRA GRAY
- 6 STAIR & ELEVATOR OVER RUN - SEE SHEET A2-02
- 7 GARAGE DOOR
- 8 SERVICE DOOR
- 9 STRUCTURAL BRICK, BLACK IRON SPOT, 4 X 16 X 8
- 10 SIGNAGE LOCATION, SIGNAGE N.I.C.
- 11 STEEL BALCONIES WITH STEEL GUARDRAILS
- 12 STEEL CHANNEL
- 13 LINE OF EXISTING ADJACENT BUILDING
- 14 PREFINISHED ALUMINUM COLLECTOR BOX AND DOWNSPOUT, MATCH MBCI SLATE GRAY
- 15 LOUVER-SEE MECHANICAL. COLOR: MATCH MBCI SLATE GRAY, SEE 6 / A5-04
- 16 SPANDREL PANEL
- 17 GLASS RAILING
- 18 GRANITE BASE
- 19 LIGHT FIXTURE - SEE ELECTRICAL.
- 20 EMERGENCY LIGHT - SEE ELECTRICAL
- 21 PRE-FINISHED ALUMINUM GUTTER
- 22 WALL HYDRANT
- 23 FIRE DEPARTMENT CONNECTION - SEE PLUMBING
- 24 ACRYLIC SIGNAGE, BY OTHERS

0 2 4 6 8 10
SCALE: 1/8" = 1'-0"

STATE OF ILLINOIS
MARK J. SULLIVAN
001-013238
LICENSED ARCHITECT

NO	DATE	ISSUE DESCRIPTION
2	06/28/21	ISSUED FOR PERMIT
1	05/05/21	ISSUED FOR FOUNDATION PERMIT

COPYRIGHT 2021, SULLIVAN GOULETTE & WILSON, LTD. EXPRESSLY RESERVES ITS COMMON LAW COPYRIGHT AND OTHER PROPERTY RIGHTS IN THESE PLANS. THESE PLANS ARE NOT TO BE REPRODUCED, CHANGED OR COPIED IN ANY FORM OR MANNER WHATSOEVER, NOR ARE THEY TO BE ASSIGNED TO ANY THIRD PARTY, WITHOUT FIRST OBTAINING THE EXPRESS WRITTEN PERMISSION AND CONSENT OF SULLIVAN GOULETTE & WILSON, LTD.

THESE DRAWINGS MAY HAVE BEEN REPRODUCED AT A SIZE DIFFERENTLY THAN ORIGINALLY DRAWN. OWNER AND ARCHITECT ASSUME NO RESPONSIBILITY FOR USE OF INCORRECT SCALE.

CONTRACTOR SHALL VERIFY ALL EXISTING CONDITIONS PRIOR TO PROCEEDING WITH CONSTRUCTION AND NOTIFY ARCHITECT IMMEDIATELY OF ANY DISCREPANCIES OR CONFLICTS.

PRINCIPAL: MS MS, GG F.M.: MA DRAWN BY: JF, YY

SULLIVAN GOULETTE & WILSON
ARCHITECTS
444 N MICHIGAN AVE
SUITE 1850
CHICAGO, IL 60611
Ph 312.988.7412
Fx 312.988.7409
www.sgwarch.com

PROFESSIONAL DESIGN FIRM
License Number: 184-001505
Expiration Date: April 30, 2021

3217 N CLARK STREET

CHICAGO, ILLINOIS 60657

EXTERIOR ELEVATIONS

A2-02



2	06/28/21	ISSUED FOR PERMIT
1	05/05/21	ISSUED FOR FOUNDATION PERMIT
NO	DATE	ISSUE DESCRIPTION

COPYRIGHT 2021: SULLIVAN GOULETTE & WILSON, LTD. EXPRESSLY RESERVES ITS COMMON LAW COPYRIGHT AND OTHER PROPERTY RIGHTS IN THESE PLANS. THESE PLANS ARE NOT TO BE REPRODUCED, CHANGED OR COPIED IN ANY FORM OR MANNER WHATSOEVER, NOR ARE THEY TO BE ASSIGNED TO ANY THIRD PARTY, WITHOUT FIRST OBTAINING THE EXPRESSED WRITTEN PERMISSION AND CONSENT OF SULLIVAN GOULETTE & WILSON, LTD.

THESE DRAWINGS MAY HAVE BEEN REPRODUCED AT A SIZE DIFFERENTLY THAN ORIGINALLY DRAWN. OWNER AND ARCHITECT ASSUME NO RESPONSIBILITY FOR USE OF INCORRECT SCALE.

CONTRACTOR SHALL VERIFY ALL EXISTING CONDITIONS PRIOR TO PROCEEDING WITH CONSTRUCTION AND NOTIFY ARCHITECT IMMEDIATELY OF ANY DISCREPANCIES OR CONFLICTS.

PRINCIPAL: MS P.M.: MA
QC BY: MS, GG DRAWN BY: JF, YY

**S U L L I V A N
G O U L E T T E
& W I L S O N**

A R C H I T E C T S

444 N MICHIGAN AVE
SUITE 1850
CHICAGO, IL 60611

Ph 312.988.7412
Fx 312.988.7409
www.sgwarch.com

PROFESSIONAL DESIGN FIRM
License Number: 184-001505
Expiration Date: April 30, 2021

**3217 N CLARK
STREET**

CHICAGO, ILLINOIS 60657

RENDERING	
-----------	--



2	06/28/21	ISSUED FOR PERMIT
1	05/05/21	ISSUED FOR FOUNDATION PERMIT
NO	DATE	ISSUE DESCRIPTION

COPYRIGHT 2021, SULLIVAN GOULETTE & WILSON, LTD. EXPRESSLY RESERVES ITS COMMON LAW COPYRIGHT AND OTHER PROPERTY RIGHTS IN THESE PLANS. THESE PLANS ARE NOT TO BE REPRODUCED, CHANGED OR COPIED IN ANY FORM OR MANNER WHATSOEVER, NOR ARE THEY TO BE ASSIGNED TO ANY THIRD PARTY, WITHOUT FIRST OBTAINING THE EXPRESS WRITTEN PERMISSION AND CONSENT OF SULLIVAN GOULETTE & WILSON, LTD.

THESE DRAWINGS MAY HAVE BEEN REPRODUCED AT A SIZE DIFFERENTLY THAN ORIGINALLY DRAWN. OWNER AND ARCHITECT ASSUME NO RESPONSIBILITY FOR USE OF INCORRECT SCALE.

CONTRACTOR SHALL VERIFY ALL EXISTING CONDITIONS PRIOR TO PROCEEDING WITH CONSTRUCTION AND NOTIFY ARCHITECT IMMEDIATELY OF ANY DISCREPANCIES OR CONFLICTS.

PRINCIPAL: MS F.M.: MA
QC BY: MS, GG DRAWN BY: JF, YY

**SULLIVAN
GOULETTE
& WILSON**

ARCHITECTS
444 N MICHIGAN AVE
SUITE 1850
CHICAGO, IL 60611
Ph 312.988.7412
Fx 312.988.7409
www.sgwarch.com

PROFESSIONAL DESIGN FIRM
License Number: 184-001505
Expiration Date: April 30, 2021

3217 N CLARK STREET

CHICAGO, ILLINOIS 60657

RENDERING