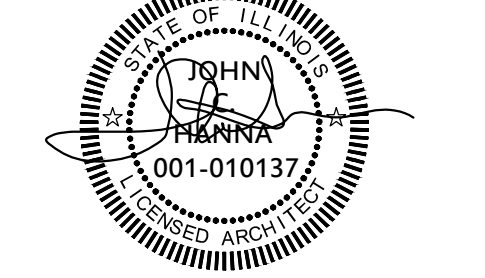


WARNING: This plan Protected under Copyright Laws. Original mylar drawing on file at the architects' office can be reproduced with the architects permission only. If someone wishes to copy this plan; contact John Hanna (312) 750-1800

ISSUED FOR REVIEW
ISSUED FOR REVIEW 10.22.19
ISSUED FOR PERMIT 03.06.20
ISSUED FOR BID
ISSUED FOR CONSTN

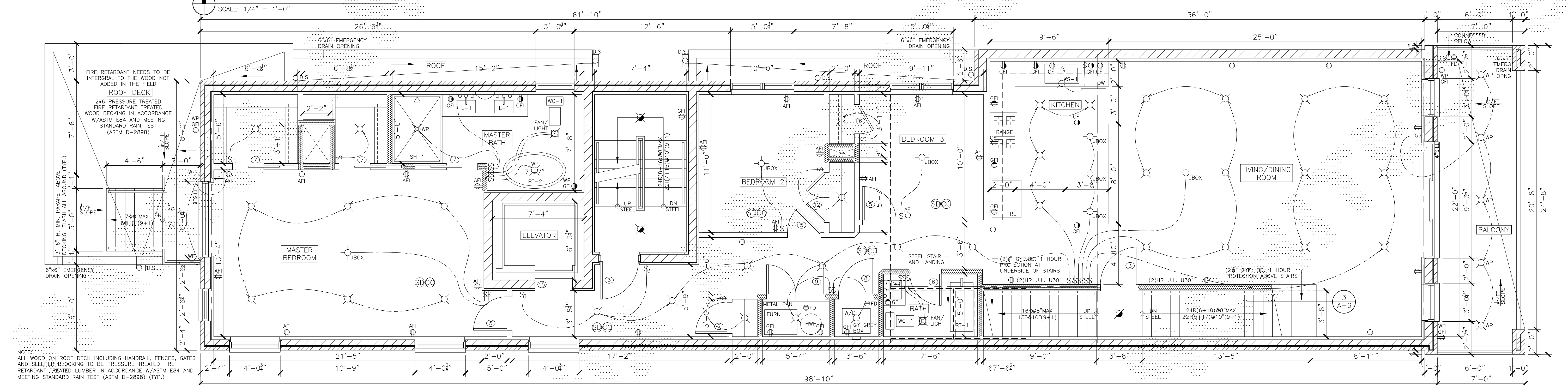
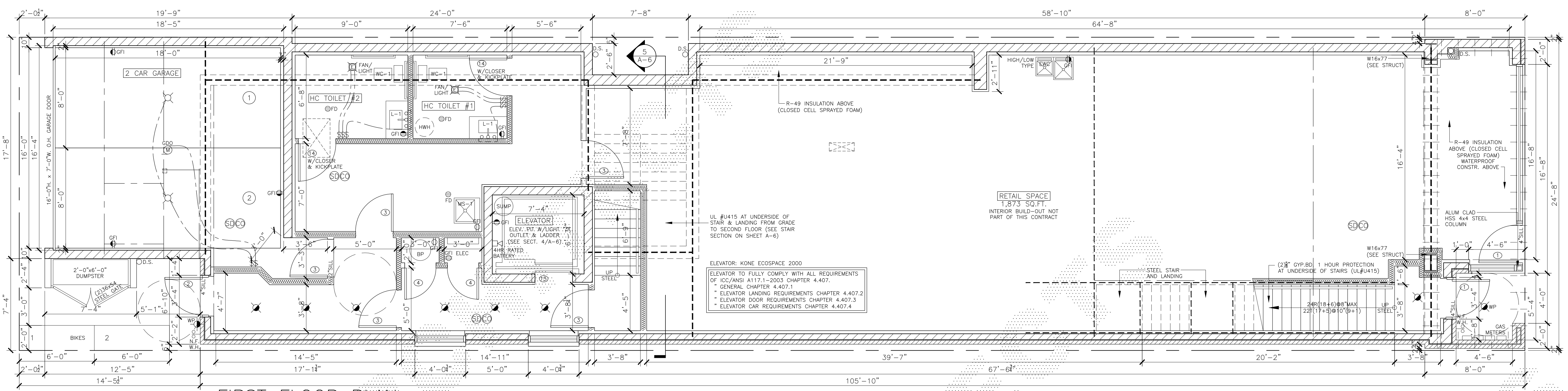


PROJECT NAME & ADDRESS
**3542 N. SOUTHPORT
4 STORY/3 UNIT
w/ COMMERCIAL
BUILDING
CHICAGO, ILLINOIS**

SHEET TITLE
**FLOOR PLANS,
NOTES, &
SCHEDULES**

FILENAME

SHEET NUMBER
A-2



DOOR SCHEDULE

TAG	TYPE	W x H x T	DOOR MATERIAL	FRAME MATERIAL	HARDWARE SET NO.	REMARKS
1	B	3'-0"x9'-0"x1 1/2"	ALUM.	ALUM.	2	EXTERIOR ENTRY DOOR
2	C	3'-0"x8'-0"x1 1/2"	ALUM.	ALUM.	2	EXTERIOR ENTRY DOOR
3	A	3'-0"x7'-0"x1 1/2"	SC.WD.	SC.WD.	3	'C' LABEL .75 HOUR RATED
4	C	2'-6"x8'-0"x1 1/2"	HM	HM	2	UTILITY
5	A	2'-8"x8'-0"x1 1/2"	SC.WD.	SC.WD.	4	BEDROOM
6	A	2'-8"x8'-0"x1 1/2"	SC.WD.	SC.WD.	4	BATH/CLOSET
7	A	2'-6"x6'-8"x1 1/2"	SC.WD.	SC.WD.	4	POCKET CLOSET/BATH
8	A	2'-10"x8'-8"x1 1/2"	SC.WD.	SC.WD.	4	LAUNDRY/UTILITY/LOUVERED
9	A	(2)2'-8"x6'-8"x1 1/2"	SC.WD.	SC.WD.	4	LAUNDRY/UTILITY/LOUVERED
10	A	(2)2'-6"x6'-8"x1 1/2"	SC.WD.	SC.WD.	4	CLOSET
11	B	3'-0"x8'-8"x1 1/2"	ALUM.	ALUM.	2	EXTERIOR ENTRY DOOR
12	A	(2)2'-0"x6'-8"x1 1/2"	SC.WD.	SC.WD.	4	CLOSET
13	C	(2)3'-0"x8'-0"x1 1/2"	HM	HM	2	UTILITY
14	C	3'-0"x8'-0"x1 1/2"	HM	HM	2	BATH
15	A	3'-0"x7'-0"	-	-	-	'B' LABEL ELEVATOR

HARDWARE SCHEDULE

NO.	HARDWARE SET
1	LCN SURFACE MOUNTED CLOSER, 2 PAIR BUTTS, FBB 179 4 1/2" x 4 1/2" PUSH/PULL MEN OR WOMEN SYMBOL FOR UNIVERSAL HANDICAPPED ACCESSIBILITY, STAINLESS STEEL KICKPLATE EACH FACE, WALL STOP
2	2 PAIR 4 1/2" x 4 1/2" BUTTS, LOCKSET/DUMMY KNOB 1 & 8 FLUSH BOLT (2) WALL STOP O.H. CLOSER & S.S. KICK PLATE - EX FACE
3	LCN CLOSER W/O.H. STOP, 2 PAIR BUTTS, FBB 179 4 1/2" x 4 1/2" LOCKSET, MORTISE THRESHOLD, 1 1/2" LEVER, WEATHER STRIP & THRESHOLD
4	2 PAIR BUTTS, STOP
5	2 PAIR BUTTS, LOCKSET STOP
6	4 PAIR 4 1/2" x 4 1/2" BUTTS, COORDINATOR (2) WALL STOPS (2) O.H. CLOSERS

- ELECTRICAL SYMBOLS**
- SINGLE POLE SWITCH
 - 3-WAY SWITCH
 - DUPLEX CONV. OUTLET 15" AFF (U.N.O.)
 - DUPLEX CONV. OUTLET 36" AFF
 - WATERPROOF. OUTLET
 - GROUND FAULT OUTLET
 - ARC FAULT OUTLET
 - DIRECT CONNECT TO APPLIANCE
 - WALL FIXTURE
 - RECESSED DOWNLIGHT
 - DOUBLE WALL FLOOD LIGHTS
 - EXHAUST FAN
 - CEILING FAN AND LIGHT
 - MOTOR
 - SMOKE DETECTOR (20FT. FROM COOKTOP)
 - SMOKE DETECTOR (10FT. FROM COOKTOP) EQUIPPED W/AN ALARM SILENCING SWITCH
 - SMOKE DETECTOR (6FT. FROM COOKTOP) IS OF THE PHOTOELECTRIC TYPE
 - CARBON MONOXIDE DETECTOR
 - SMOKE DETECTOR W/AUDIBLE & VISUAL EMERGENCY WARNING SYSTEM

- WALL SYMBOLS**
- 2x4 WOOD WALL STUDS @16" O.C.
 - W/ 5/8" GYPSUM BOARD BOTH SIDES (UNLESS NOTED OTHERWISE)
 - TYPE 'X' GYP.BD. AT FIRE RATED CONSTR.
 - CONCRETE BLOCK
 - FACE BRICK W/CONCRETE BLOCK
 - SOLID CONCRETE BLOCK
- * COMPLY WITH UNDERWRITERS LABORATORIES TEST DATA FIRE RATED DESIGNS FOR ALL SPECIFIED FIRE RATED CONSTRUCTION (TP.).
- LEGEND**
- SURFACE MOUNT MEDICINE CABINET W/STRIP LIGHT ABOVE
 - GROUND FAULT INTERRUPTER
 - ARC FAULT INTERRUPTER
 - OVERHEAD LIGHT FIXTURE
 - LED LIGHTS IN COMMON AREA
 - N.F.W.H. - NON FREEZE WALL HYDRANT
 - U.N.O. - UNLESS NOTED OTHERWISE
 - V.I.F. - VERIFY IN FIELD

FIXTURE SCHEDULE

SYMBOL	DESCRIPTION	CATALOG NO.	LAMPS	REMARKS
B	RECESS 6" DOWN LIGHTING	HALO: H7800T	NO SIZE TYPE	HALLWAY
	WALL MOUNTED EMERGENCY BATTERY UNIT WITH TWO HEADS & REMOTE HEAD	SURE-LITES XR SERIES	2 6W HALOG	6 V. CHICAGO CODE APPROVED

- NOTES:**
- STAIRWAY, PORCH, DECK AND BALCONY RAILINGS, BOTH INTERIOR AND EXTERIOR SHALL BE DESIGNED TO RESIST A SIMULTANEOUS VERTICAL AND HORIZONTAL THRUST OF 50 LBS./FT. (POUNDS-FORCE, PER LINEAR FOOT) APPLIED AT THE TOP OF THE RAILING OR A CON-CENTRATED LOAD OF 200 LBS./FT. IN ANY DIRECTION WHICH EVER PRODUCES THE GREATEST STRESS. SHALL SUBMIT SEALED CALCS AND SHOP DRAWINGS TO THE ARCHITECT FOR REVIEW PRIOR TO FABRICATION (TP.).
 - ALL REQUIRED EXIT DOORS SHALL BE KEYLESS IN THE DIRECTION OF EGRESS.
 - ALL MATERIALS AT STAIRWELLS FOR INTERIOR WALL AND CEILING FINISH SHALL BE CLASS I FLAME SPREAD RATING.
 - VERIFY ALL EQUIPMENT DIMENSIONS BEFORE CONSTRUCTING WALL PARTITIONS.
 - STRUCTURE SHOWN AT EACH FLOOR IS FLOOR STRUCTURE ABOVE.
 - VERIFY ALL DIMENSIONS IN THE FIELD.
 - USE DUROCK TILE BACKER BOARD AT ALL SHOWERS & WHIRLPOOLS.
 - CAULK ALL EXTERIOR PENETRATIONS.

WALL & PARTITION SCHEDULE

FIRE RATED ASSEMBLY SCHEDULE:

- 3 HOUR U.L. U902 BEARING MASONRY WALL 6"x8"x16" CMU W/4" FACE BRICK CLASS D-2
- 2 HOUR U.L. U905 BEARING MASONRY WALL 8"x8"x16" CONCRETE BLOCK CLASS C-3
- 2 HOUR U.L. U905 BEARING MASONRY WALL 8"x8"x16" CONCRETE BLOCK CLASS D-2
- 3 HOUR U.L. U904 BEARING MASONRY WALL 8"x8"x16" CONCRETE BLOCK CLASS C-3
- 2 HOUR U.L. U905 BEARING MASONRY WALL 8"x8"x16" CONCRETE BLOCK CLASS D-2
- 3 HOUR U.L. U419 LOAD BEARING STEEL STUD WALL 2x4's @16" O.C. W/(1) LAYER 5/8" GYP.BD. EA.FACE
- 1 HOUR U.L. U305 NON-LOAD BEARING STEEL STUD WALL 2x4's @16" O.C. W/(1) LAYER 5/8" GYP.BD. EA.FACE
- 2 HOUR U.L. U415 CEILING JOIST ASSEMBLY 2 1/2" DEEP MIN. "C-H" SHAPED STEEL STUDS @16" O.C. W/MIN. 1" GYP.BOARD AND 2 LAYERS 5/8" GYP. BOARD @FIN. FACE
- 1 HOUR U.L. L521 FLOOR RATED ASSEMBLY (SEE WALL SECTION)
- 1 HOUR U.L. L521 FLOOR RATED ASSEMBLY 1/2" HARDWOOD & 3/4" T&G GLUE AND NAIL PLYWOOD W/14" WOOD TRUSSES & RESILIENT CHANNELS @16" O.C. W/1 LAYER 5/8" GYPSUM BD. @CLG.

NOTE: USE TYPE 'C' DRYWALL FOR FIRE RATED ASSEMBLIES

