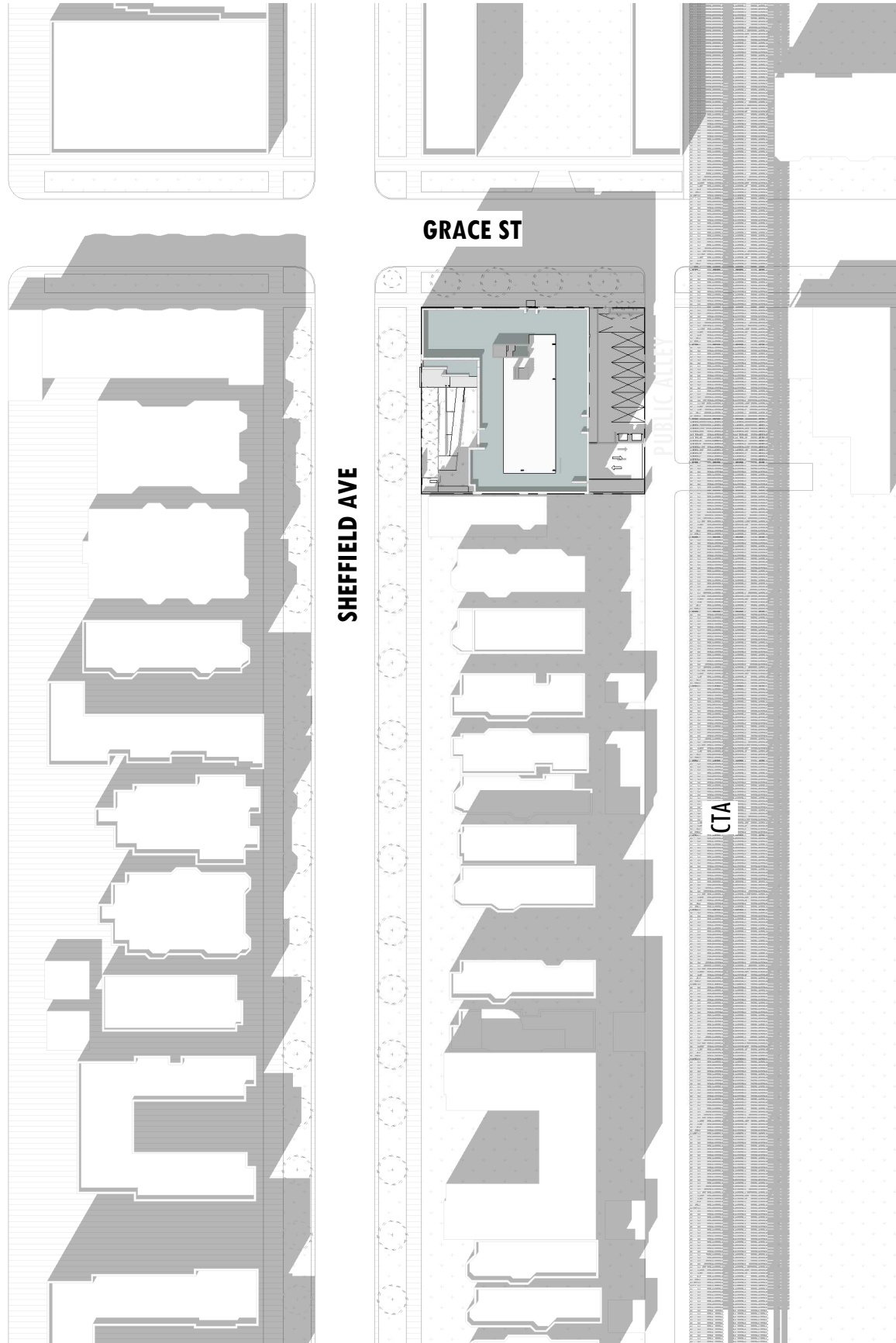




957 W GRACE ST

MCZ
957 W GRACE

06/08/17



CONTEXT PLAN

MCZ
957 W GRACE

06/08/17

W GRACE STREET

N SHEFFIELD AVE

120' - 0"

90' - 0"

30' - 0"

PARKING ENTRY

LOADING STALL

PUBLIC ALLEY

TRASH

DN TO GARAGE

30' - 0 19/32"

59' - 11 13/32"

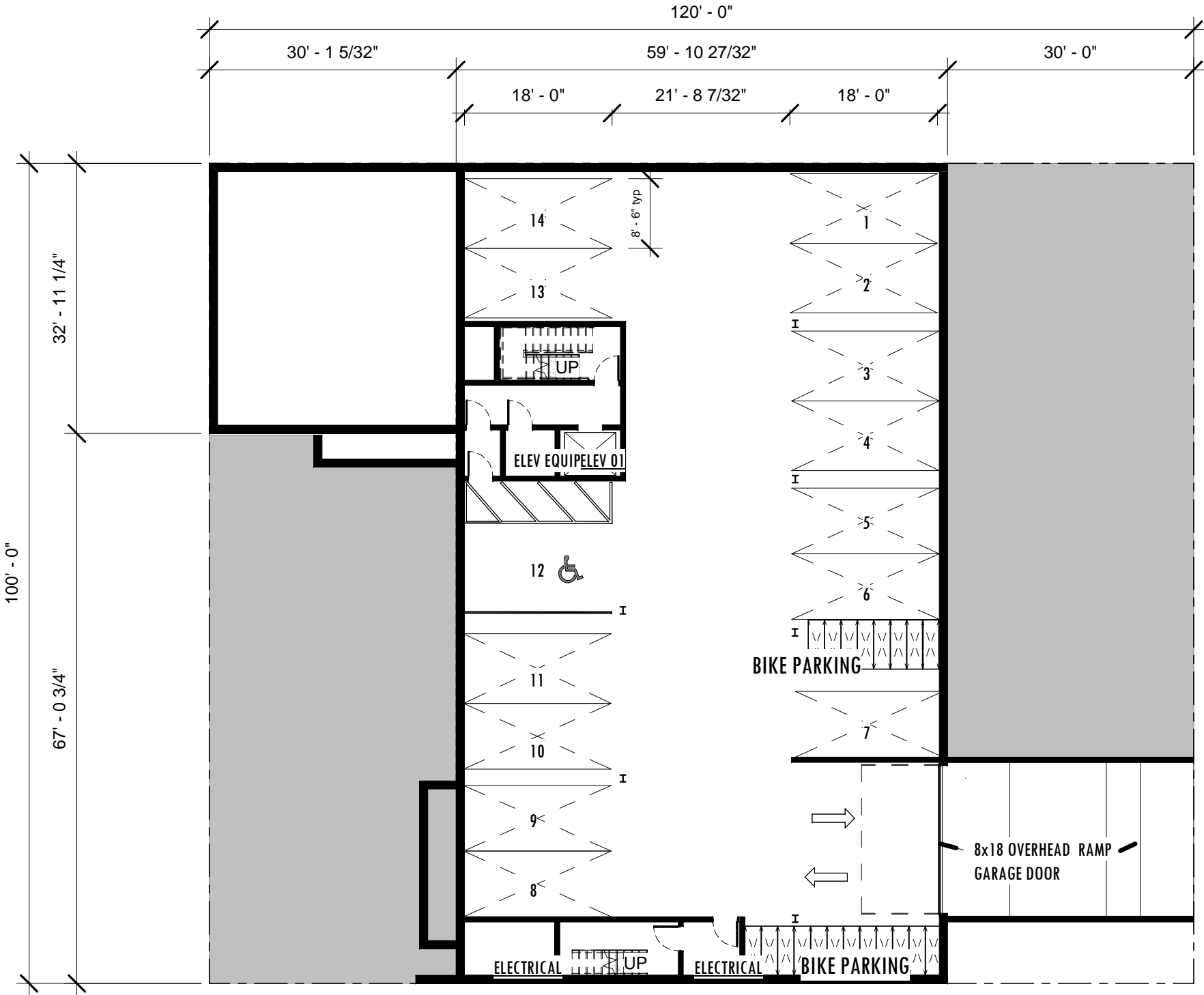
GROUND FLOOR PLAN



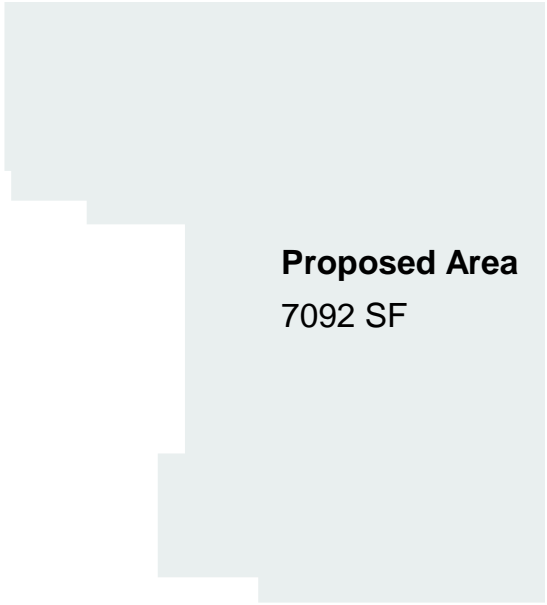
MCZ
957 W GRACE

06/08/17

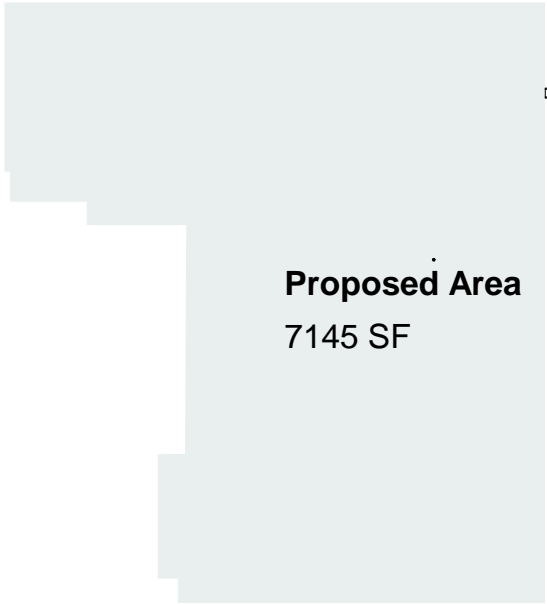
1 Basement CGM
1/16" = 1'-0"



BASEMENT FLOOR PLAN



Proposed Area
7092 SF



Proposed Area
7145 SF

1st Floor Gross Area Plan-

2nd-4th Gross Area Plan



MCZ
957 W GRACE

06/08/17

FLOOR PLAN TYPICAL

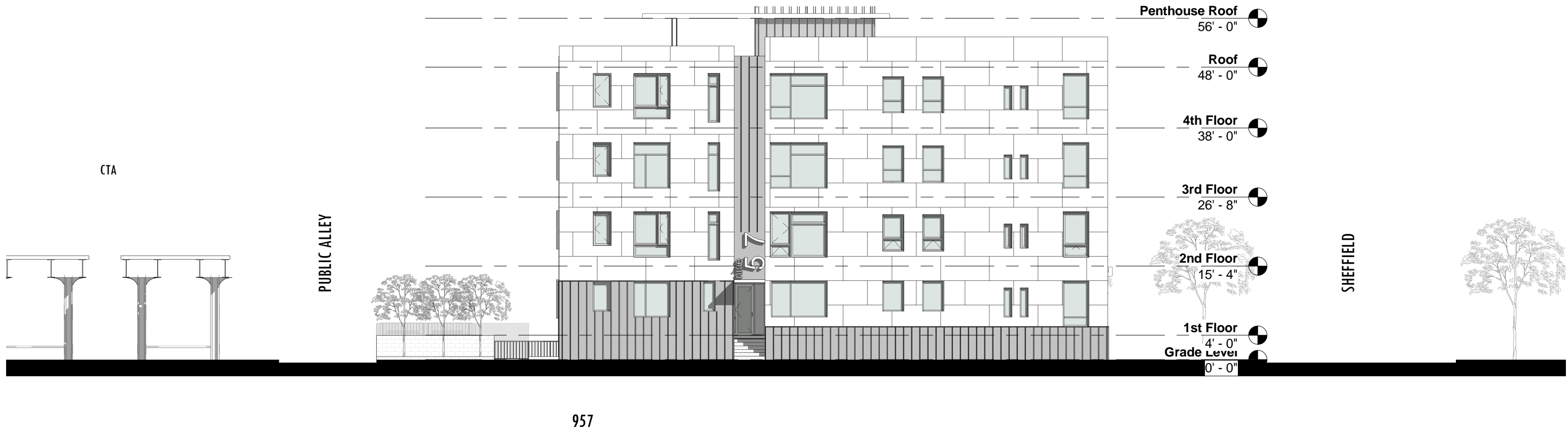


1 Sheffield Avenue Elevation CGM
1/16" = 1'-0"

MCZ
957 W GRACE

06/08/17

SHEFFIELD BUILDING ELEVATION



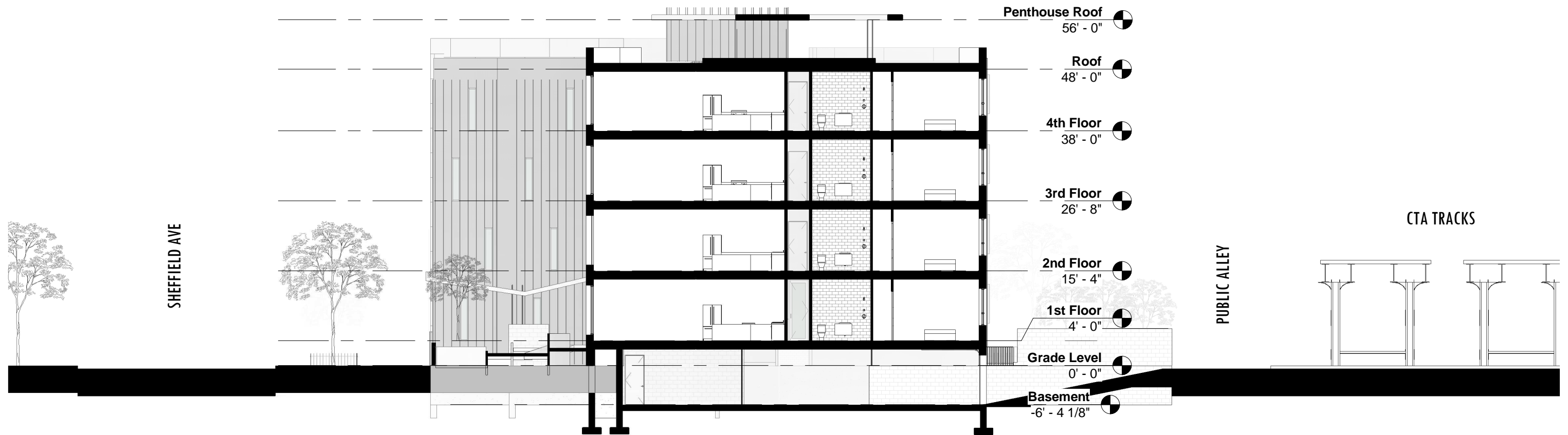
1 Grace Street Elevation CGM
1/16" = 1'-0"

MCZ
957 W GRACE

06/08/17

GRACE BUILDING ELEVATION





1 Building Section 1 CGM
1/16" = 1'-0"

MCZ
957 W GRACE

06/08/17

BUILDING SECTION

