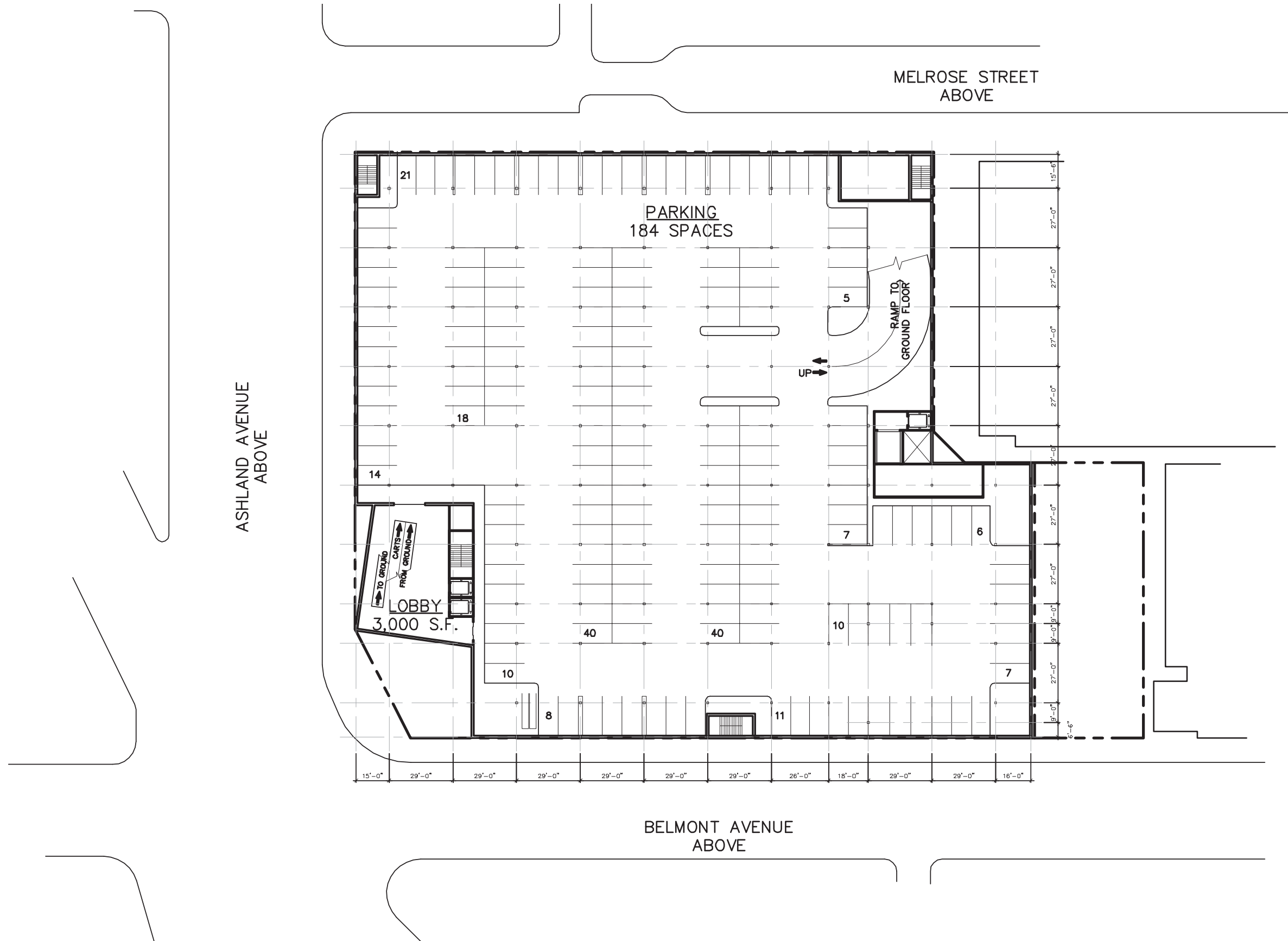


# WHOLE FOODS CONCEPT STUDY

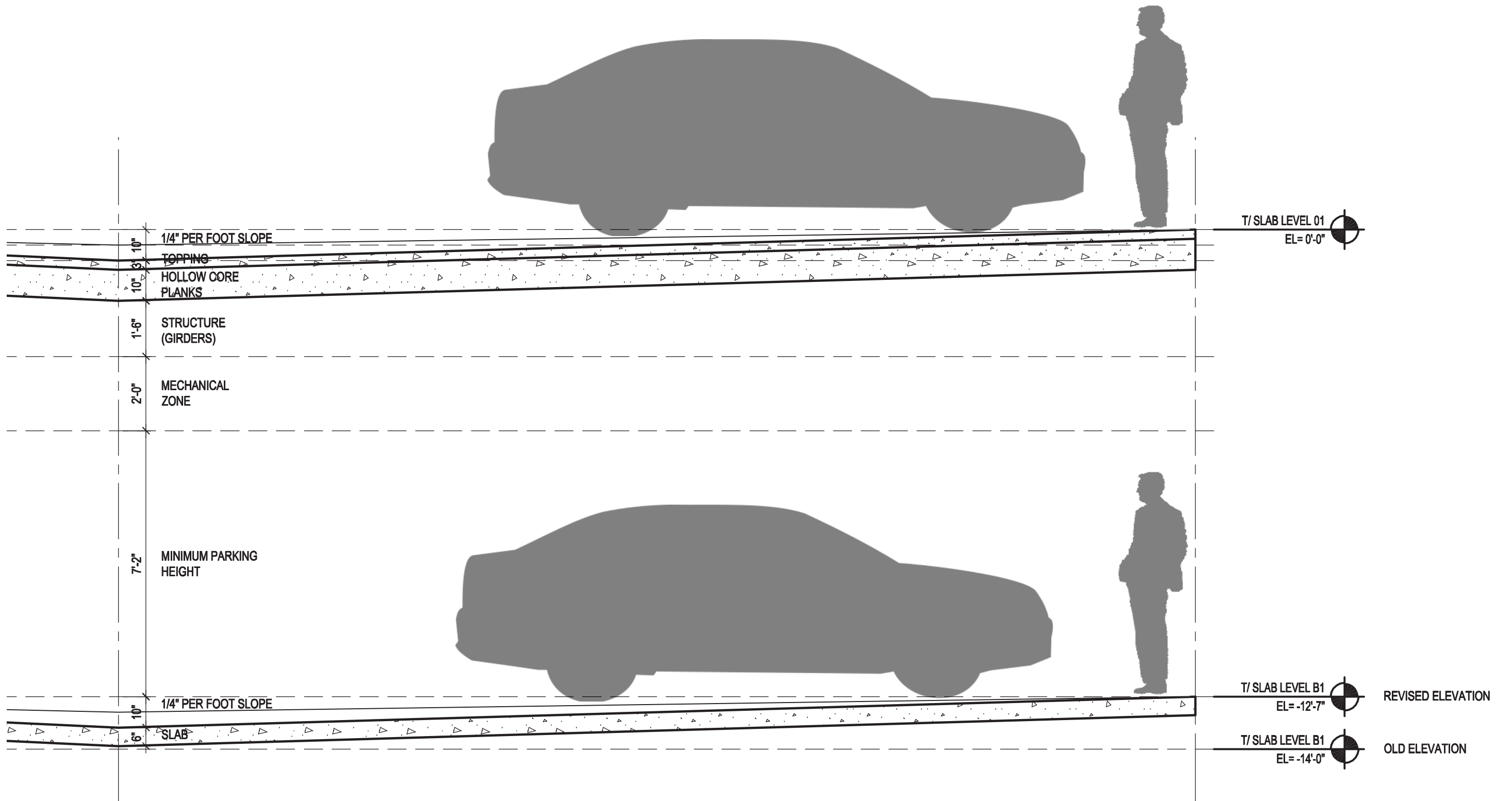
BELMONT + ASHLAND  
MARCH 19, 2015



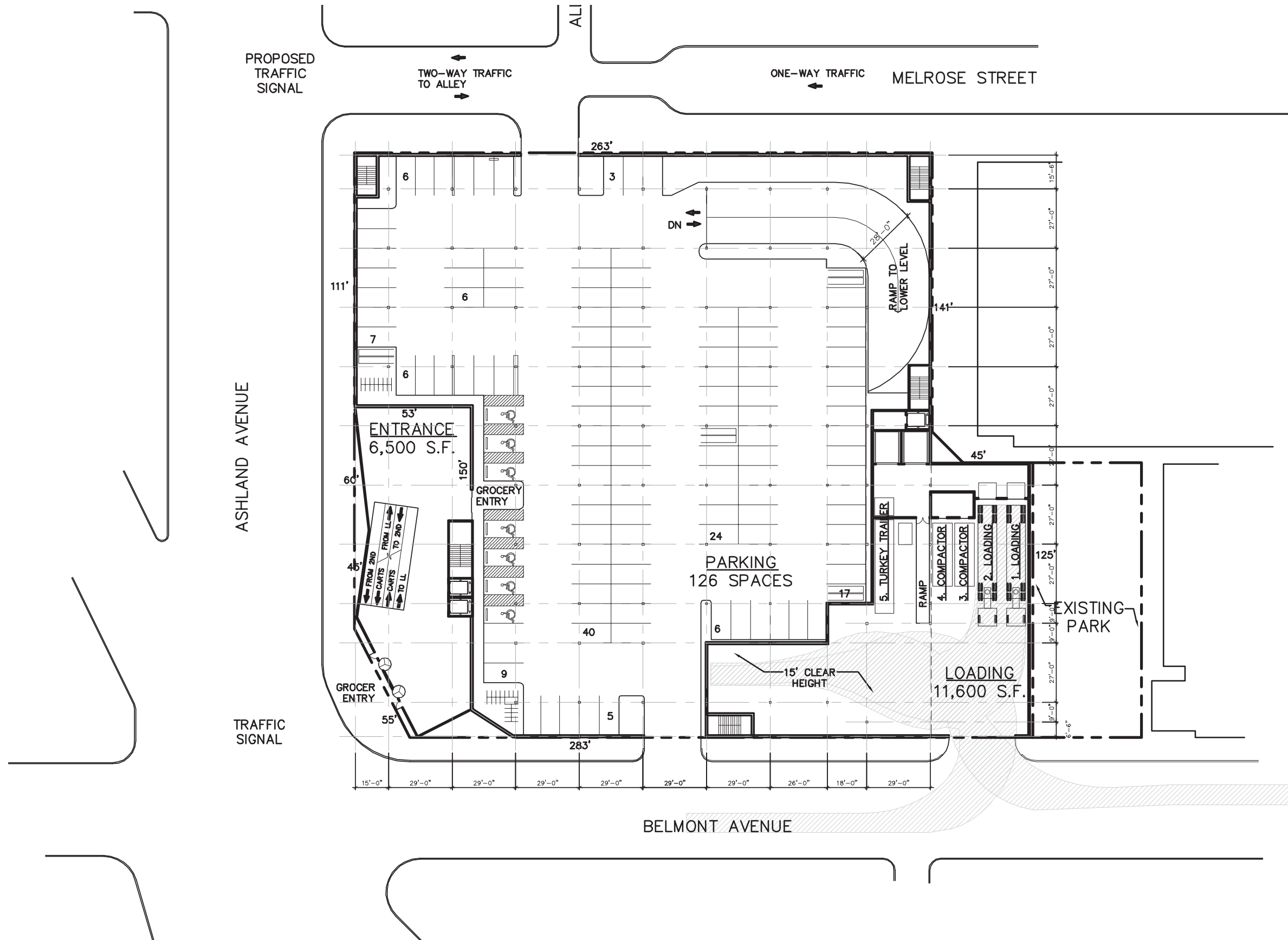
# LOWER LEVEL PLAN



# LOWER LEVEL SECTION



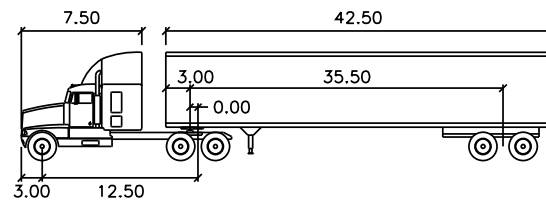
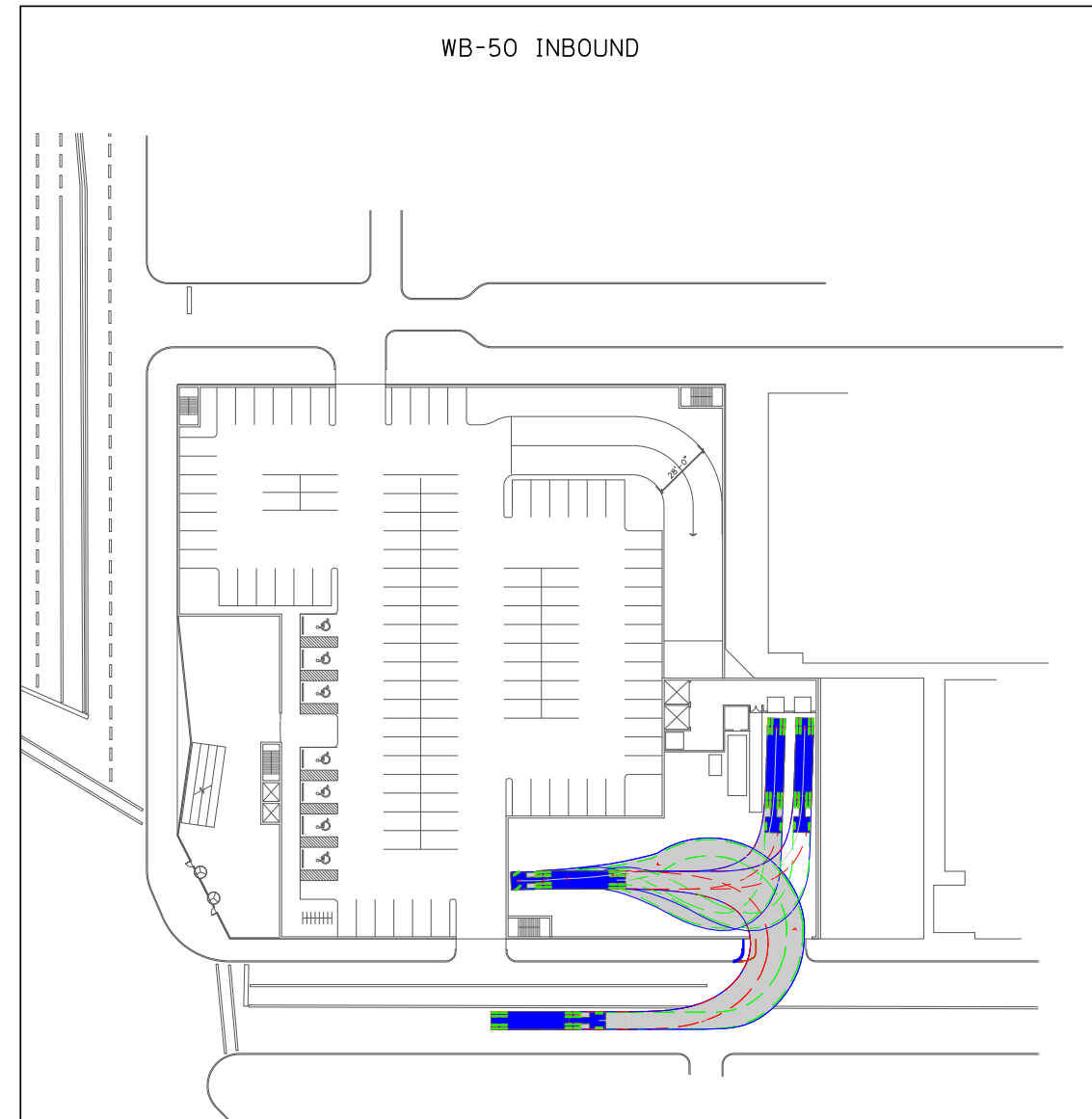
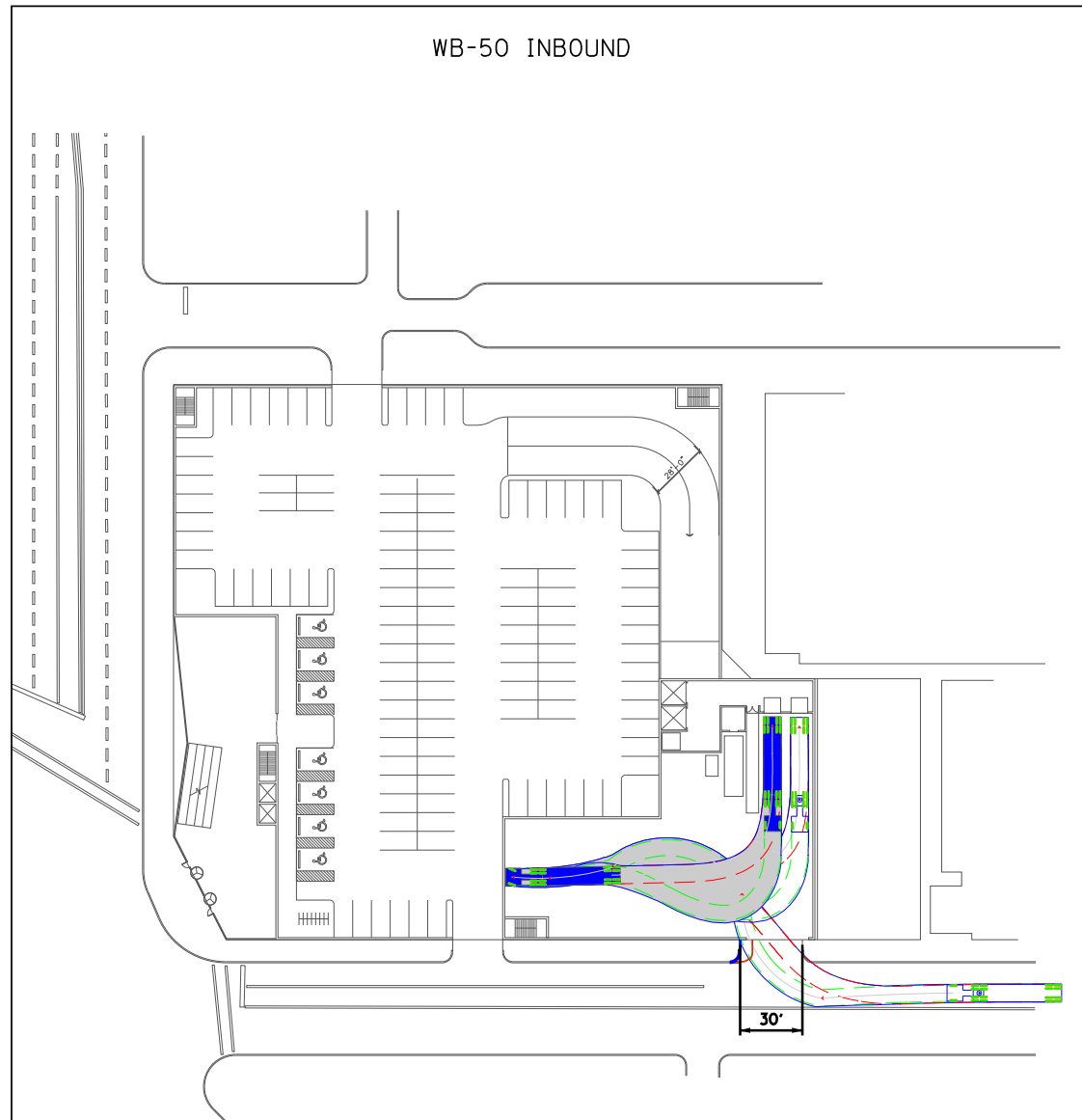
# GROUND FLOOR PLAN



# GROUND LEVEL PLAN

## TRUCK MANEUVERING

enter

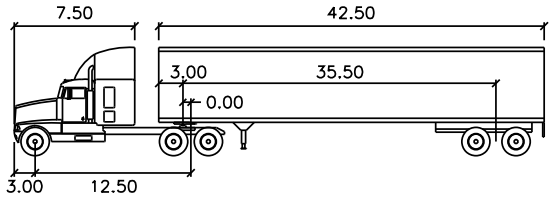
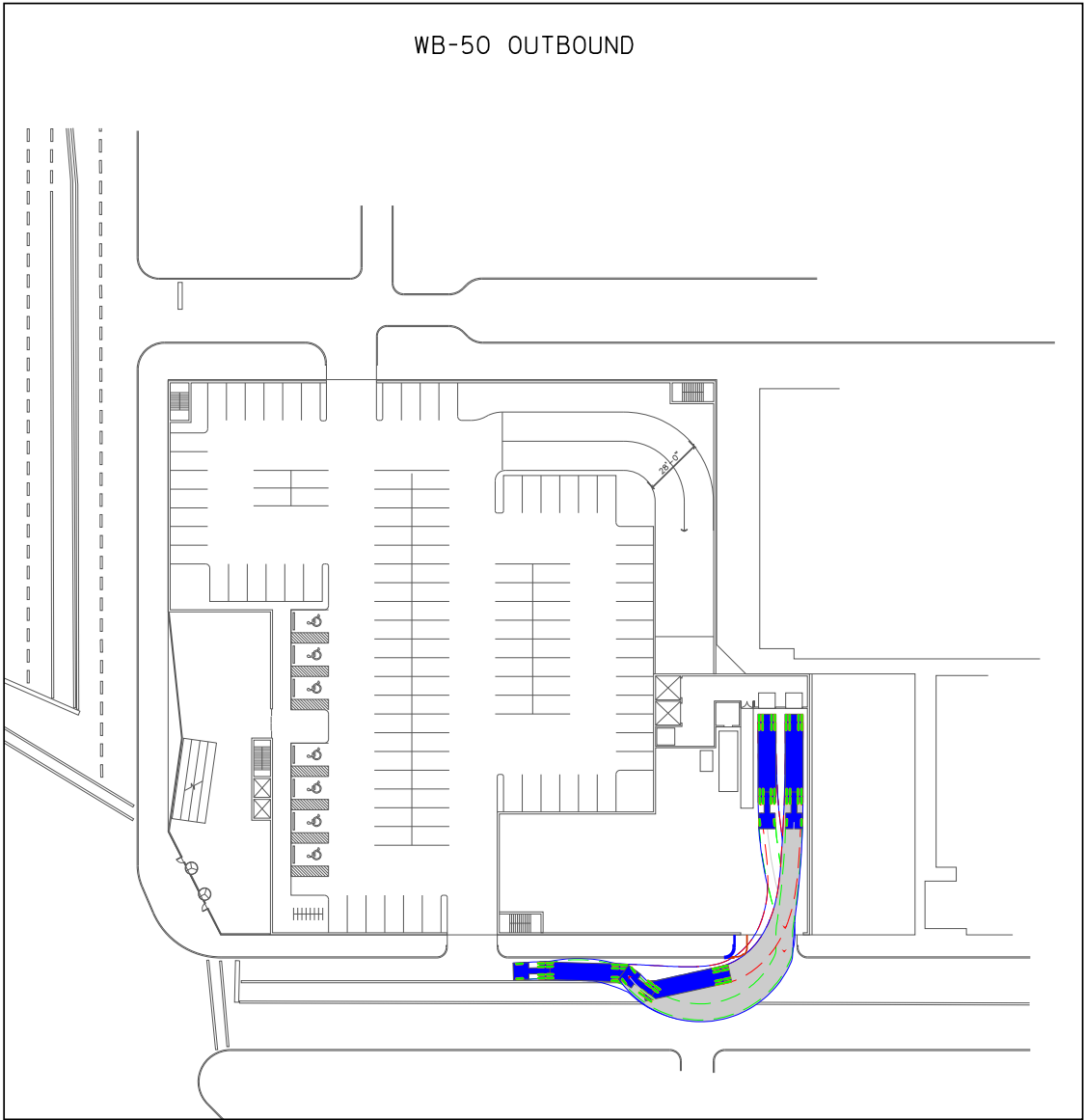
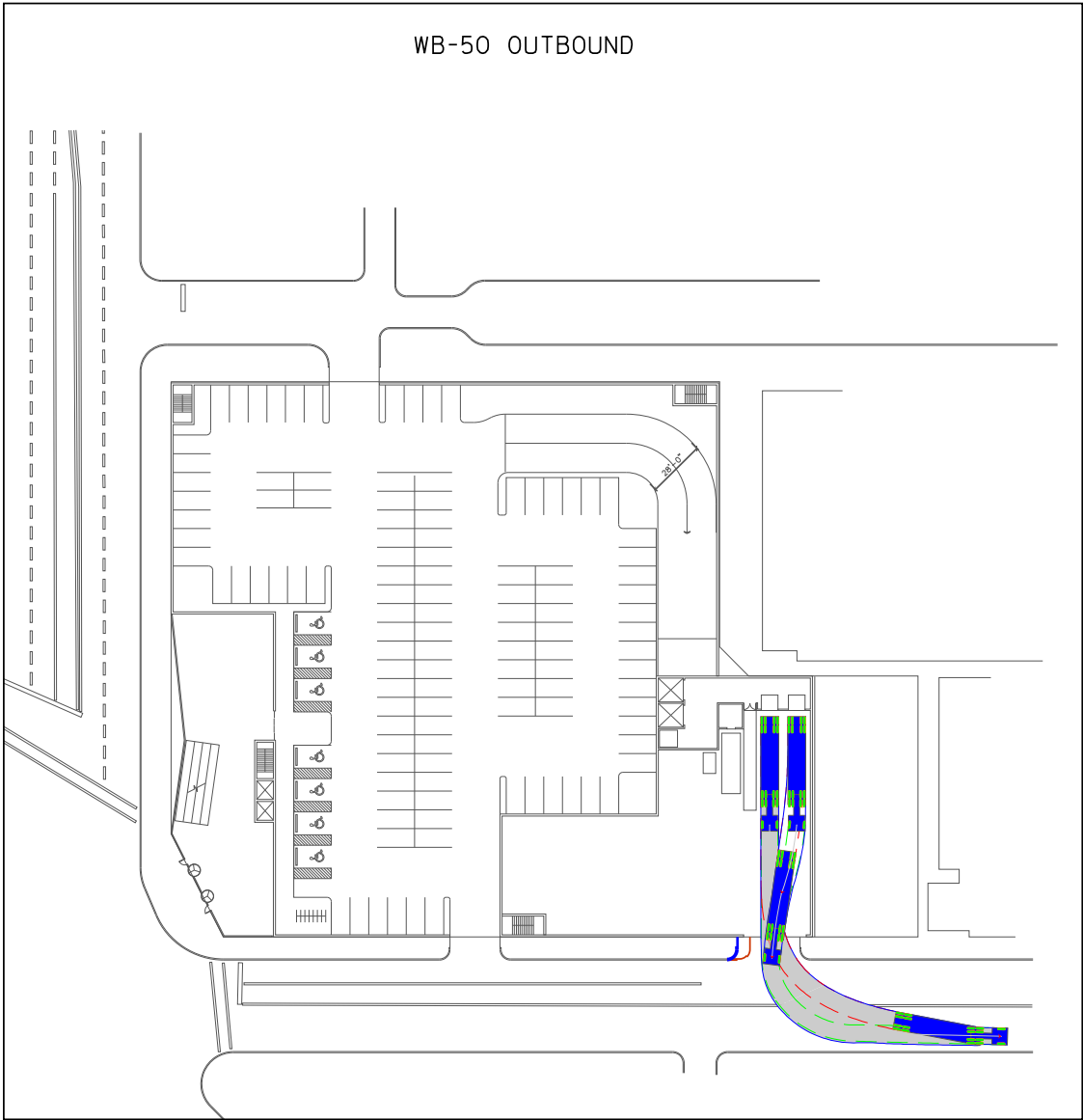


WB-50	feet		
Tractor Width	: 8.00	Lock to Lock Time	: 6.0
Trailer Width	: 8.50	Steering Angle	: 17.7
Tractor Track	: 8.00	Articulating Angle	: 70.0
Trailer Track	: 8.50		

# GROUND LEVEL PLAN

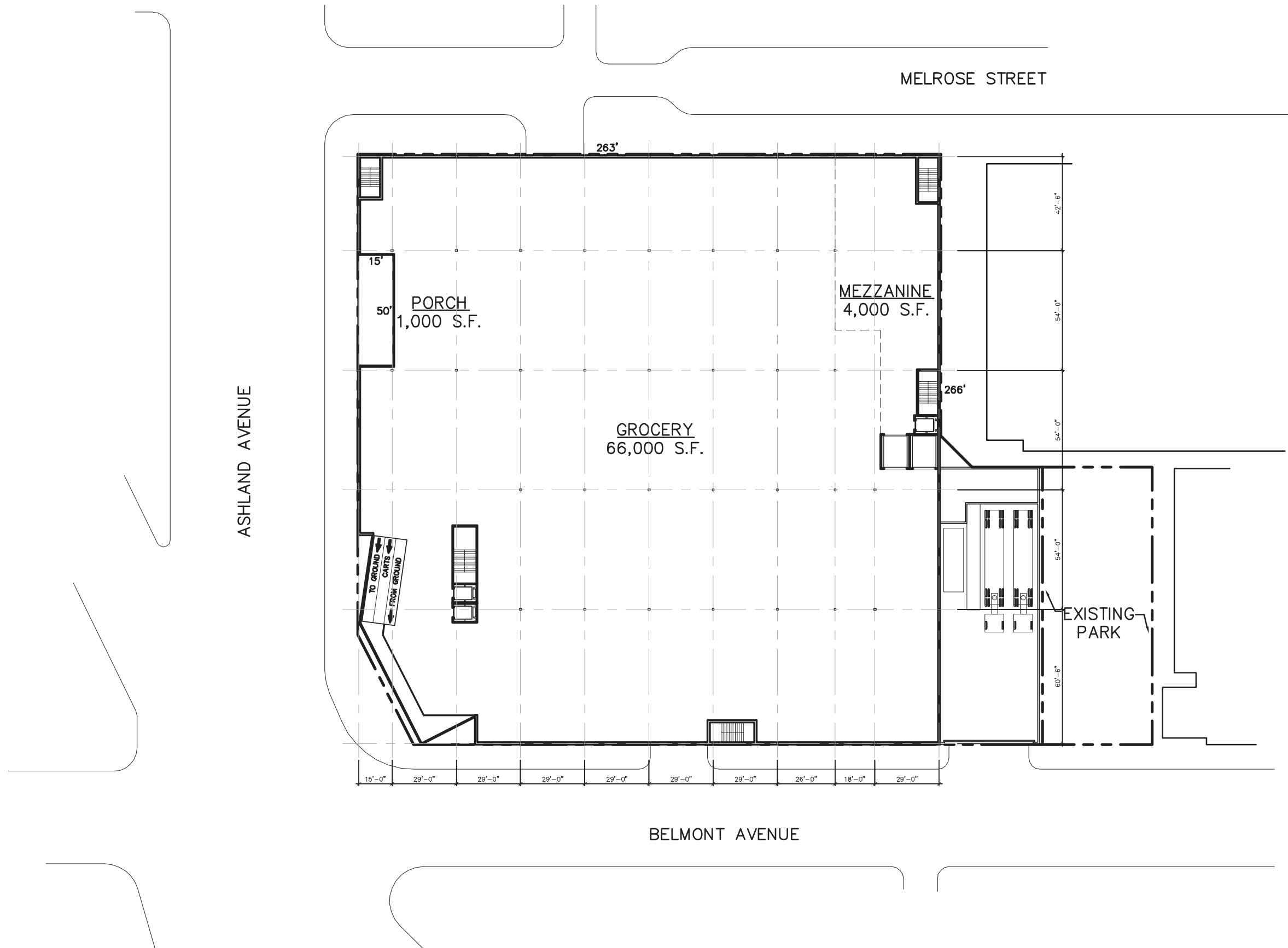
## TRUCK MANEUVERING

exit

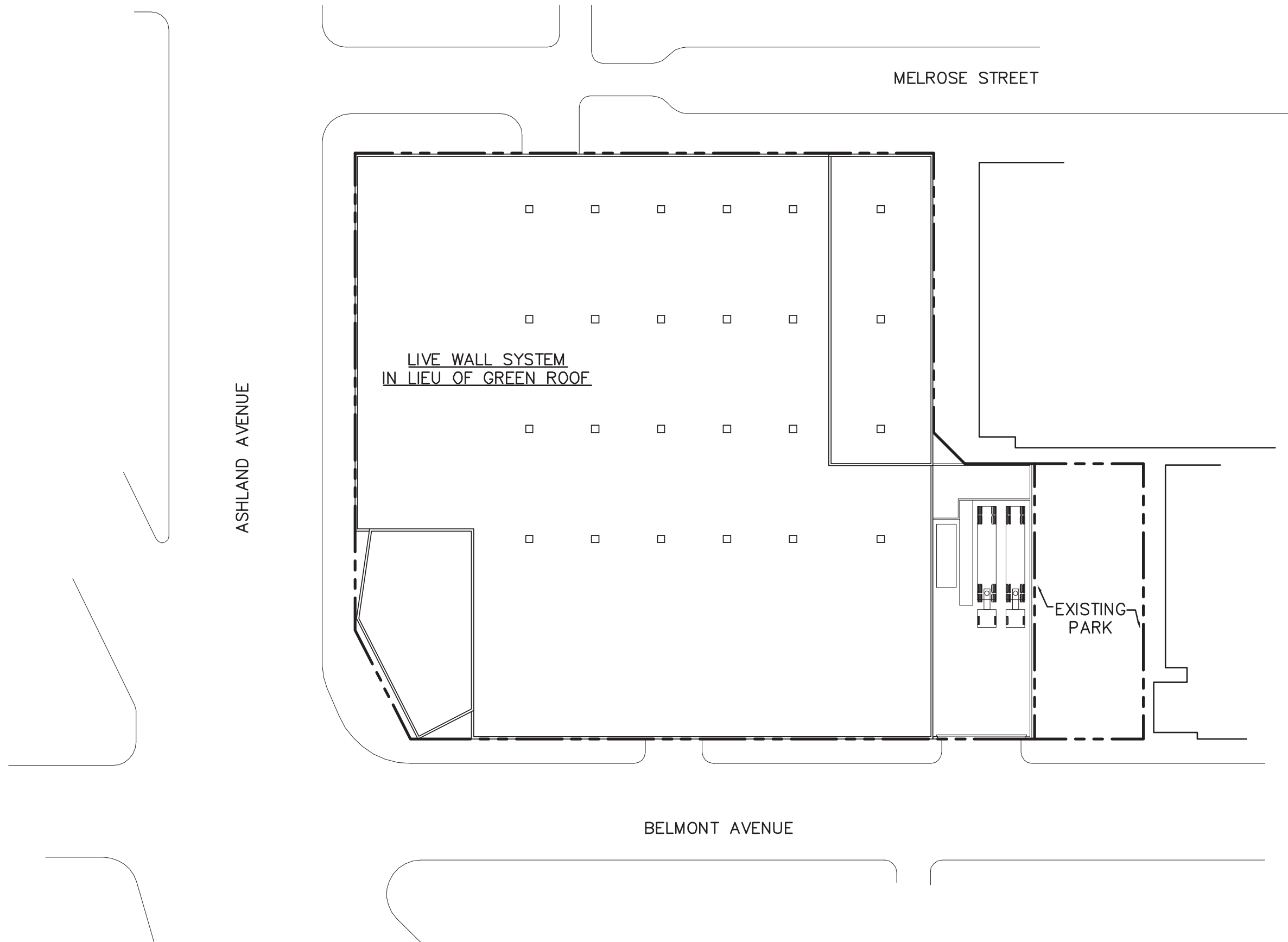


WB-50	feet		
Tractor Width	: 7.50	Lock to Lock Time	: 6.0
Tractor Track	: 3.00	Steering Angle	: 17.7
Trailer Width	: 42.50	Articulating Angle	: 70.0
Trailer Track	: 3.00		

# STORE FLOOR PLAN

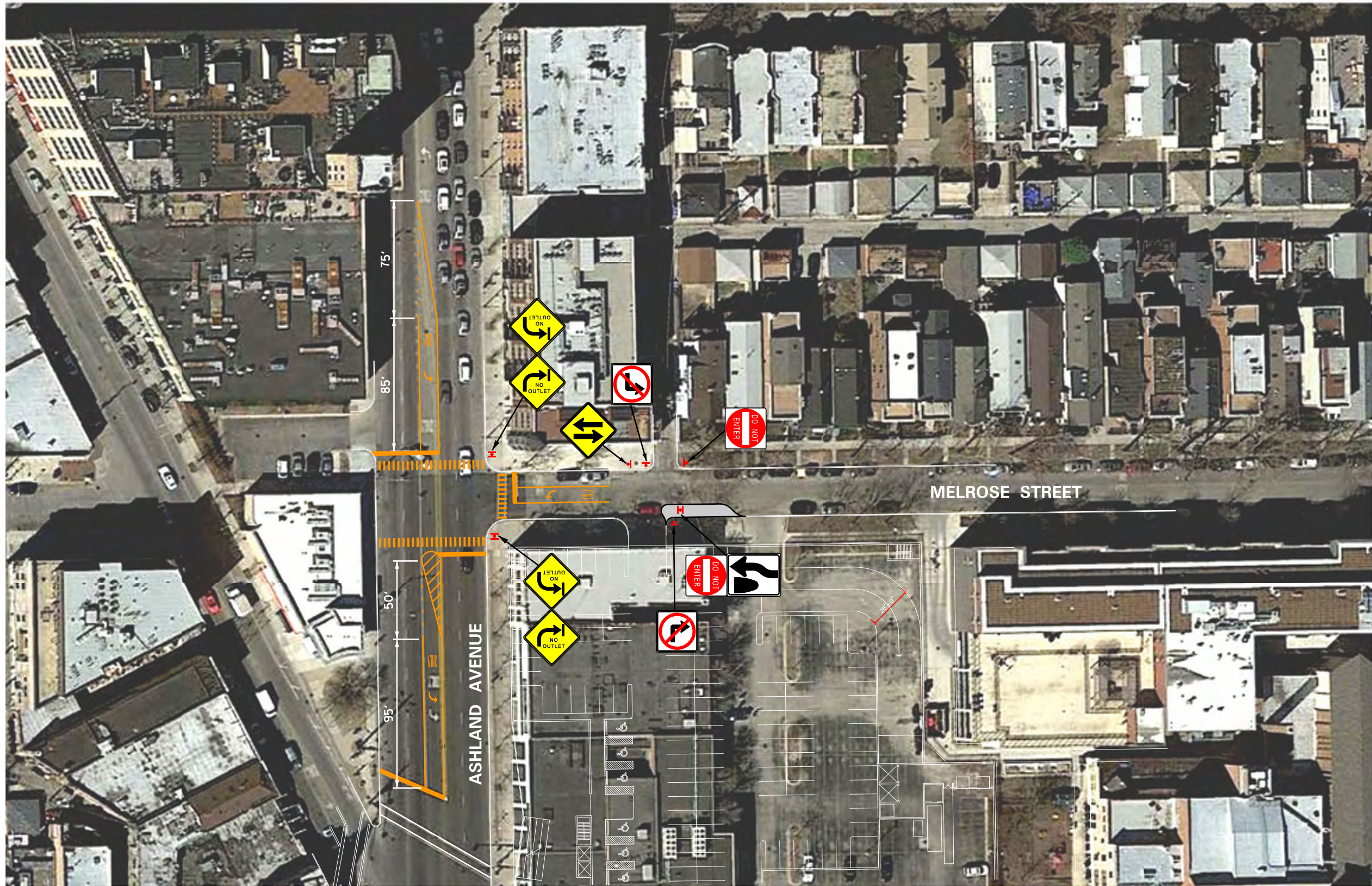


# ROOF PLAN

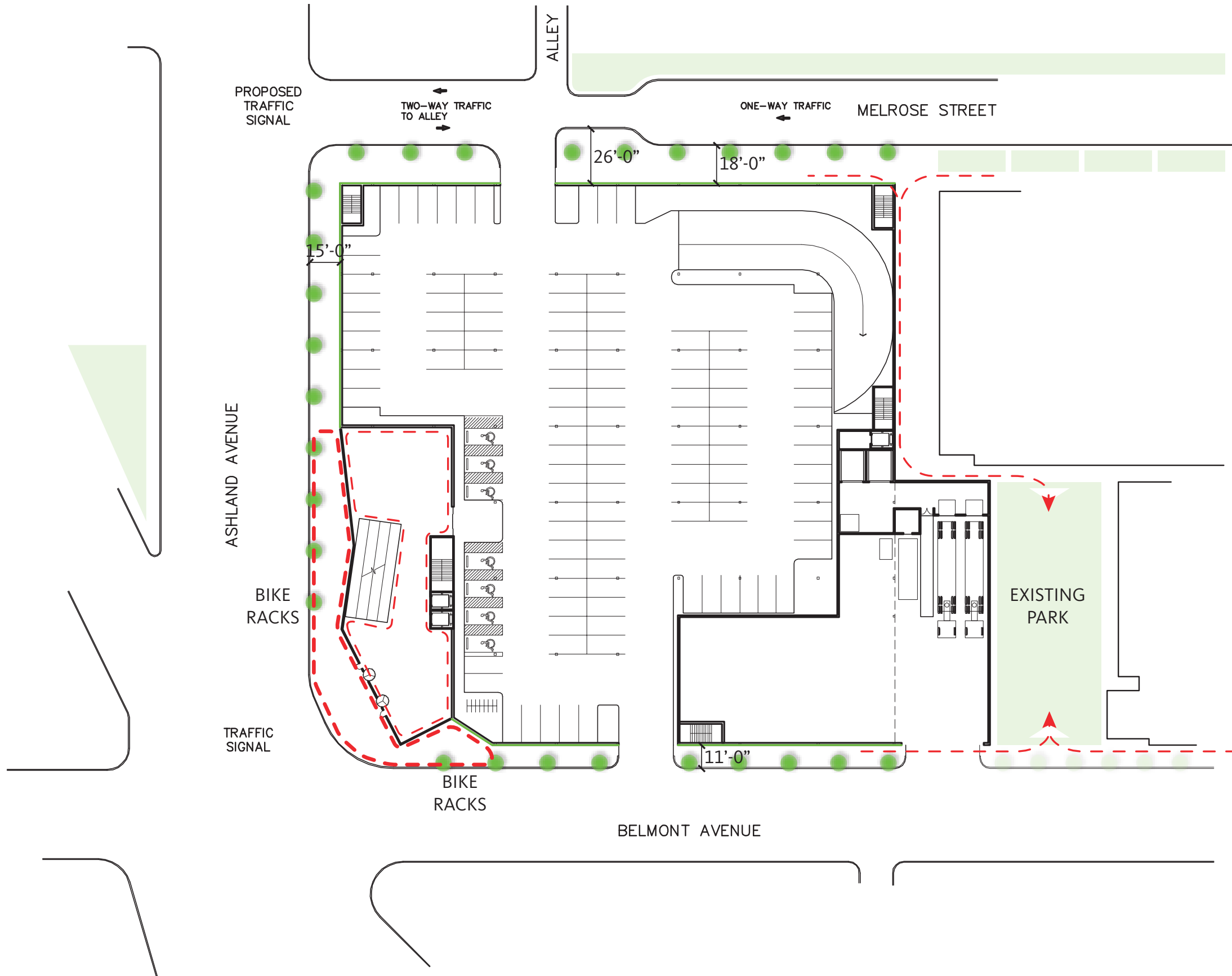




# GEOMETRICS PLAN



# LANDSCAPING/RIGHT OF WAY



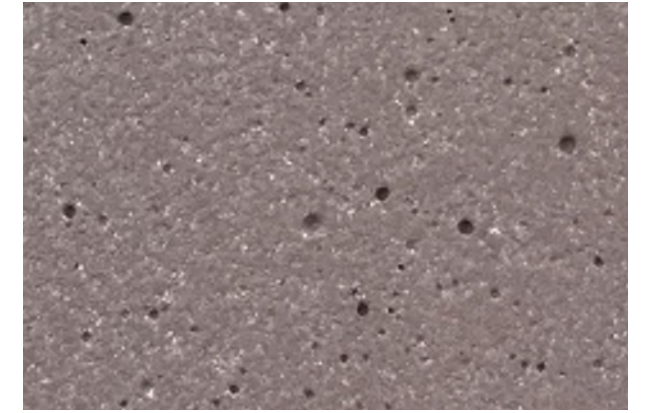
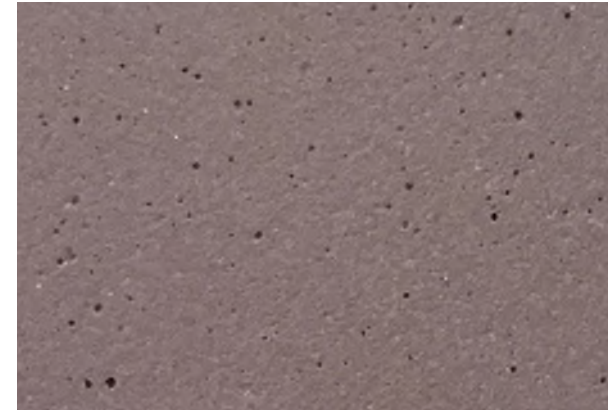
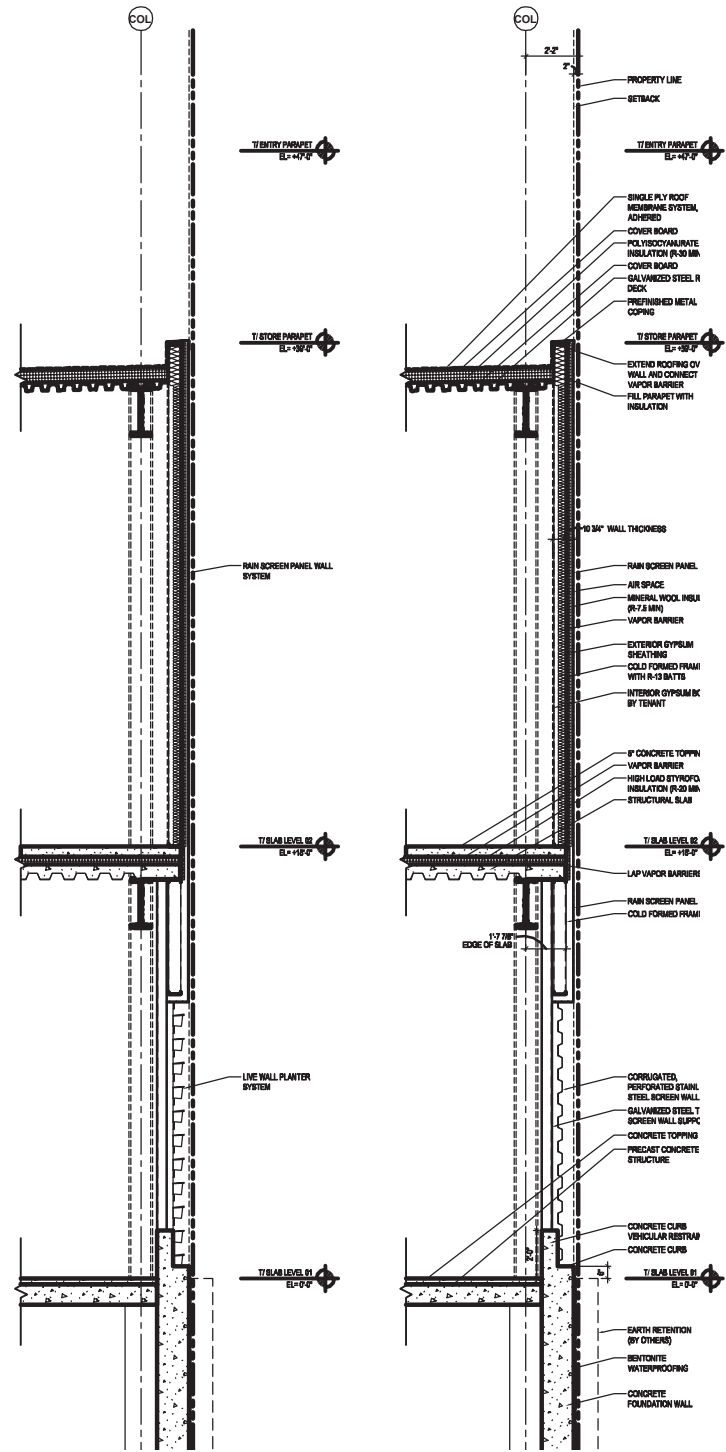
**STORE FACADE OPTION**  
**RAIN SCREEN**  
**oko skin BY REIDER**



# STORE FACADE OPTION

## RAIN SCREEN

### oko skin BY REIDER



# ENTRY



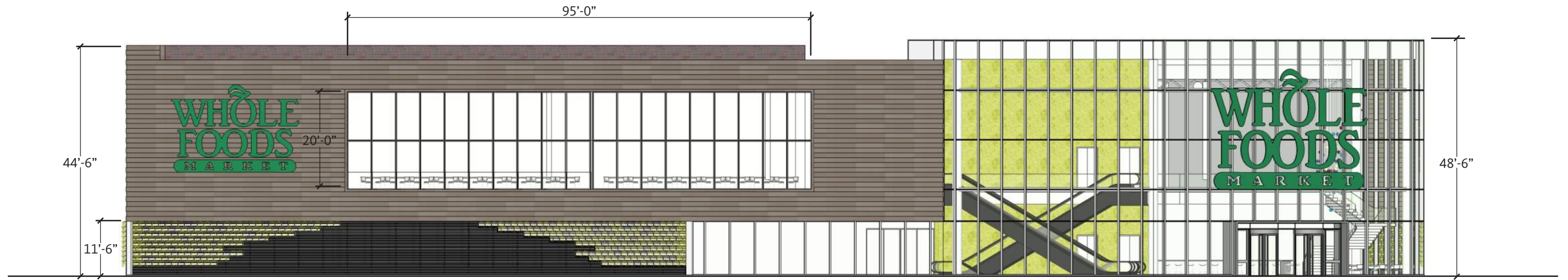
MELROSE CORNER



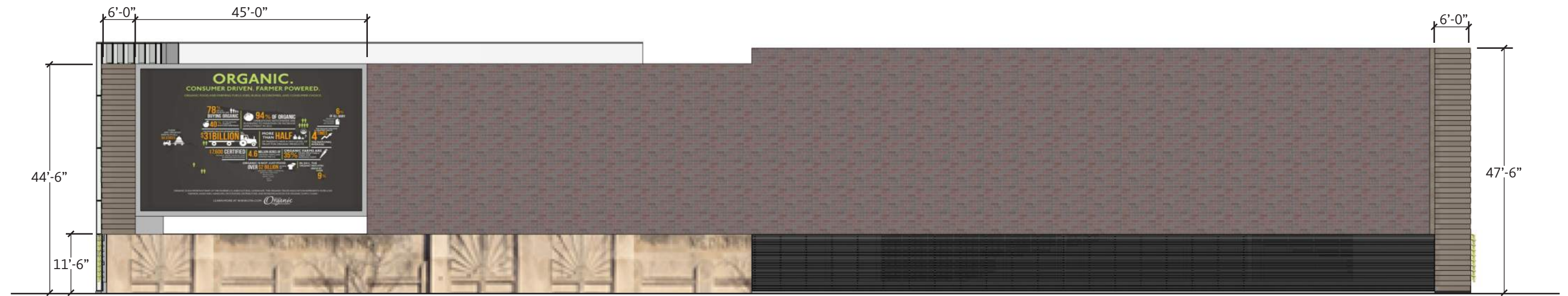
# BELMONT ELEVATION



# ELEVATIONS



## WEST ELEVATION - ASHLAND



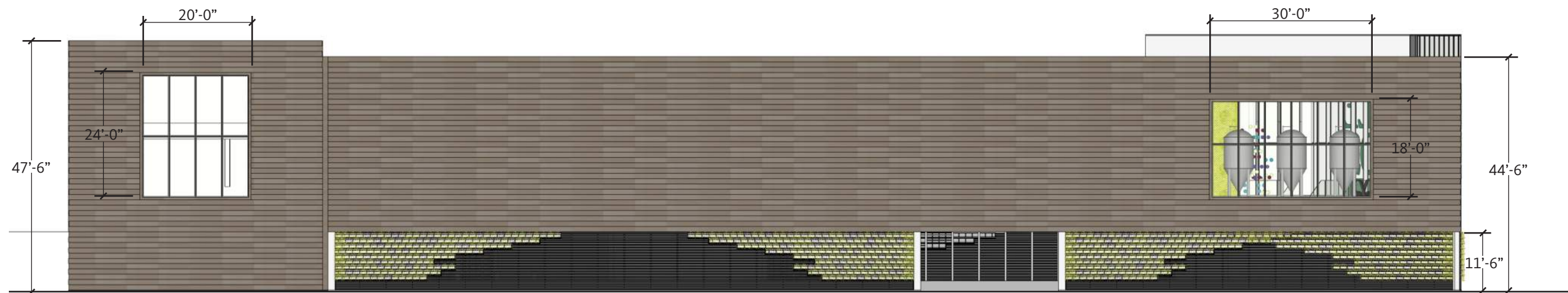
## EAST ELEVATION



# ELEVATIONS



## SOUTH ELEVATION - BELMONT



## NORTH ELEVATION - MELROSE

# ELEVATION ALTERNATE



## SOUTH ELEVATION - BELMONT

**PARKING FACADE**  
**PERFORATED METAL PANEL +**  
**LIVEWALL GREEN WALL SYSTEM**



**LIVE WALL  
green wall system**



**MAY**



**JUNE**



**JULY**



**AUGUST**



**SEPTEMBER**



**OCTOBER**



**NOVEMBER**



**DECEMBER**

# LIVE WALL green wall system














## Billowing Habit

For Sunny South, West, and East Facing Walls

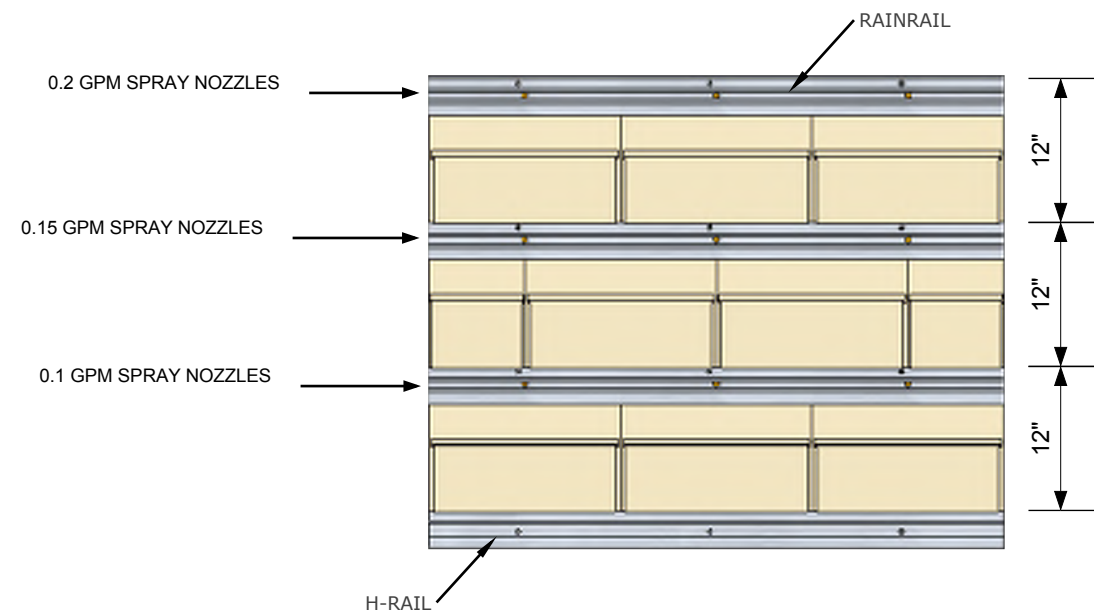
<p><b>Standard Size Planter</b></p>	 <p><b>Bergenia crassifolia</b> (Siberian Bugloss) Zone 3</p>	 <p><b>Bergenia purpurescens</b> (Purple Bergenia) Zone 3</p>	 <p><b>Campanula 'Blue Orb'</b> (‘Blue Orb’ Bellflower) Zone 3</p>	
	 <p><b>Geranium macrohizum 'Czakov'</b> (‘Czakov’ Bigroot Geranium) Zone 3</p>	 <p><b>Geranium macrohizum 'Ingwersen's'</b> (‘Ingwersen’s Bigroot Geranium) Zone 3</p>	 <p><b>Geranium macrohizum 'White Ness'</b> (‘White Ness’ Bigroot Geranium) Zone 3</p>	 <p><b>Geranium x magnificum</b> (Showy Geranium) Zone 3</p>
	 <p><b>Geranium sanguineum</b> (Bloody Geranium) Zone 4</p>	 <p><b>Heuchera micrantha 'Palace Purple'</b> (‘Palace Purple’ Coral Bells) Zone 4</p>	 <p><b>Heuchera villosa var. atropurpurea</b> (Purple Alum Root) Zone 3</p>	 <p><b>Heuchera villosa 'Bronze Wave'</b> (‘Bronze Wave’ Alum Root) Zone 3</p>
	 <p><b>Heuchera villosa macrorhizza (a.k.a. 'Autumn Bride')</b> (‘Autumn Bride’ Coral Bells) Zone 3</p>	 <p><b>Nepeta x faassenii 'Walkers Low'</b> (‘Walker’s Low’ Catmint) Zone 3</p>	 <p><b>Sedum kamtschaticum 'Takahira Dake'</b> (‘Takahira Dake’ Sedum) Zone 3</p>	 <p><b>Sedum takesimense 'Gold Carpet'</b> (‘Gold Carpet’ Sedum) Zone 4 or 5</p>

## Billowing Habit

For Shaded or North Facing Walls

<p><b>Standard Size Planter</b></p>	 <p><b>Astilbe cultivars</b> (Astilbe)</p>	 <p><b>Bergenia crassulifolia</b> (Siberian Bugloss) Zone 3</p>	 <p><b>Bergenia purpurescens</b> (Bergenia) Zone 3</p>	
	 <p><b>Epimedium - robust forms</b> (Epimedium) Zone 5</p>	 <p><b>Geranium macrohizum 'Czakov'</b> (‘Czakov’ Bigroot Geranium) Zone 3</p>	 <p><b>Geranium macrohizum 'Ingwersen's'</b> (‘Ingwersen’s Bigroot Geranium) Zone 3</p>	 <p><b>Geranium macrohizum 'White Ness'</b> (‘White Ness’ Bigroot Geranium) Zone 3</p>
	 <p><b>Geranium x magnificum</b> (Showy Geranium) Zone 4</p>	 <p><b>Heuchera 'Palace Purple'</b> (‘Palace Purple’ Coral Bells) Zone 4</p>	 <p><b>Heuchera villosa var. atropurpurea</b> (Purple Alum Root) Zone 3</p>	 <p><b>Heuchera villosa 'Bronze Wave'</b> (‘Bronze Wave’ Alum Root) Zone 3</p>
	 <p><b>Heuchera villosa macrorhizza (a.k.a. 'Autumn Bride')</b> (‘Autumn Bride’ Coral Bells) Zone 3</p>	 <p><b>Hosta cultivars, medium size cultivars</b> (Hosta) Zone 3 or 4</p>		

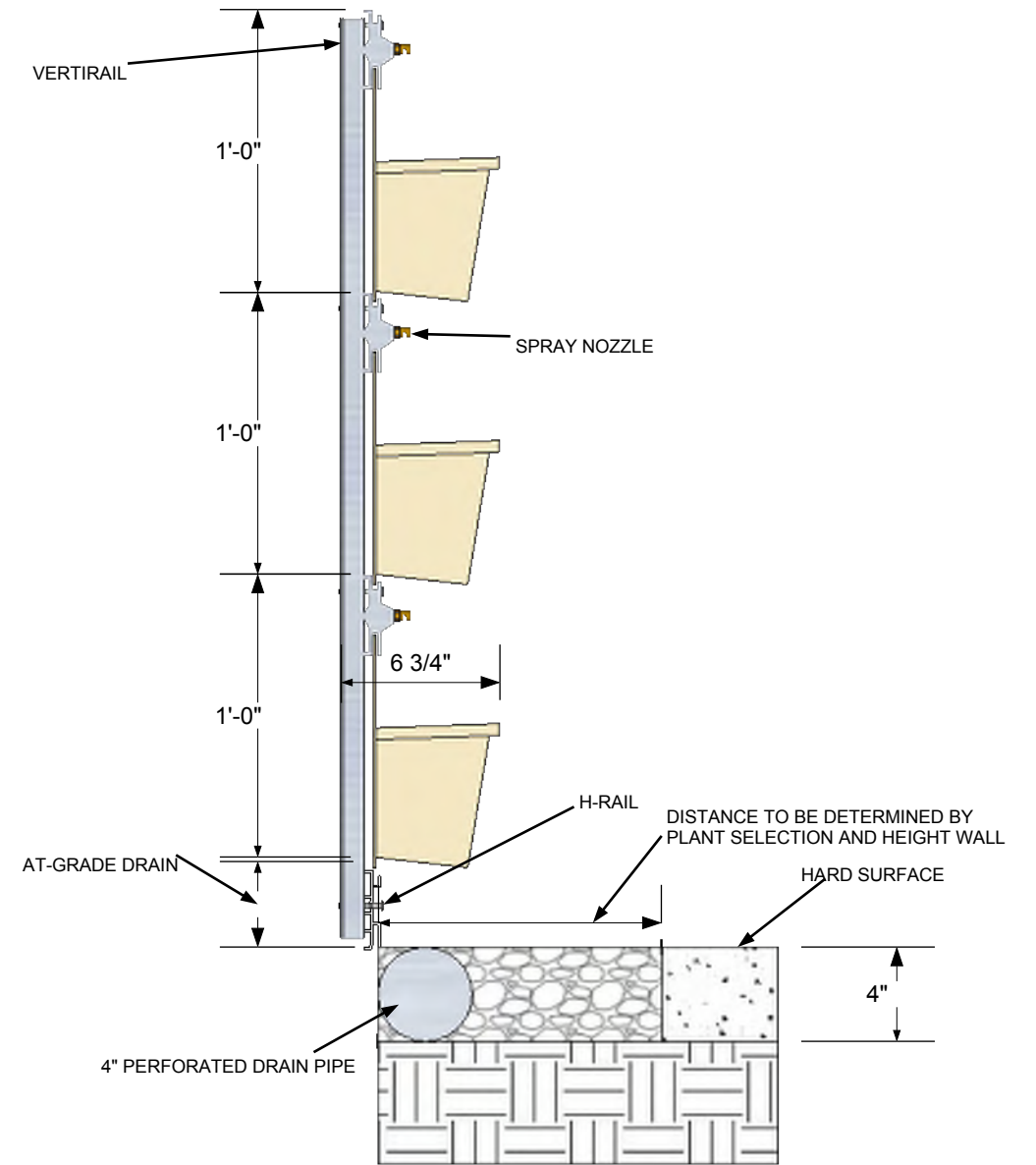
# LIVE WALL green wall system



**EXTERIOR APPLICATION EXAMPLE**

scale: 3/4" = 1'0"

3  
05

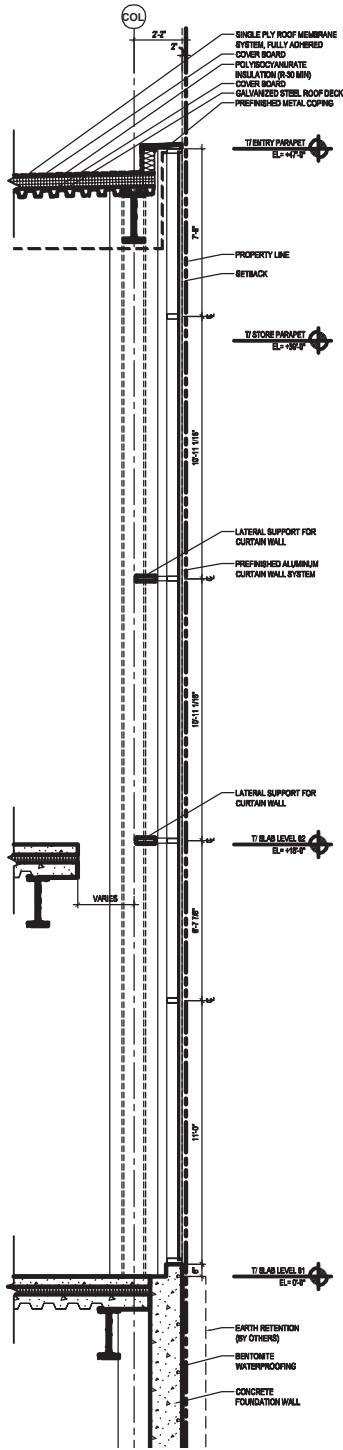


**EXTERIOR APPLICATION WALL SECTION**

scale: 1 1/2" = 1' 0"

1  
02

# LANTERN OPTION FRITTED GLASS A



# LANTERN OPTION FRITTED GLASS B

