



NORTH EAST

Rendering A

NOT TO SCALE

1111 W. ADDISON DEVELOPMENT, LLC

Zoning Submittal
 1111 W. ADDISON
 Chicago, Illinois

2 May, 2018
 16043
 DG/MGL

© HIRSCHMPG, LLC 2018

Hirsch | **MPG**
 ARCHITECTURE + PLANNING



NORTH WEST

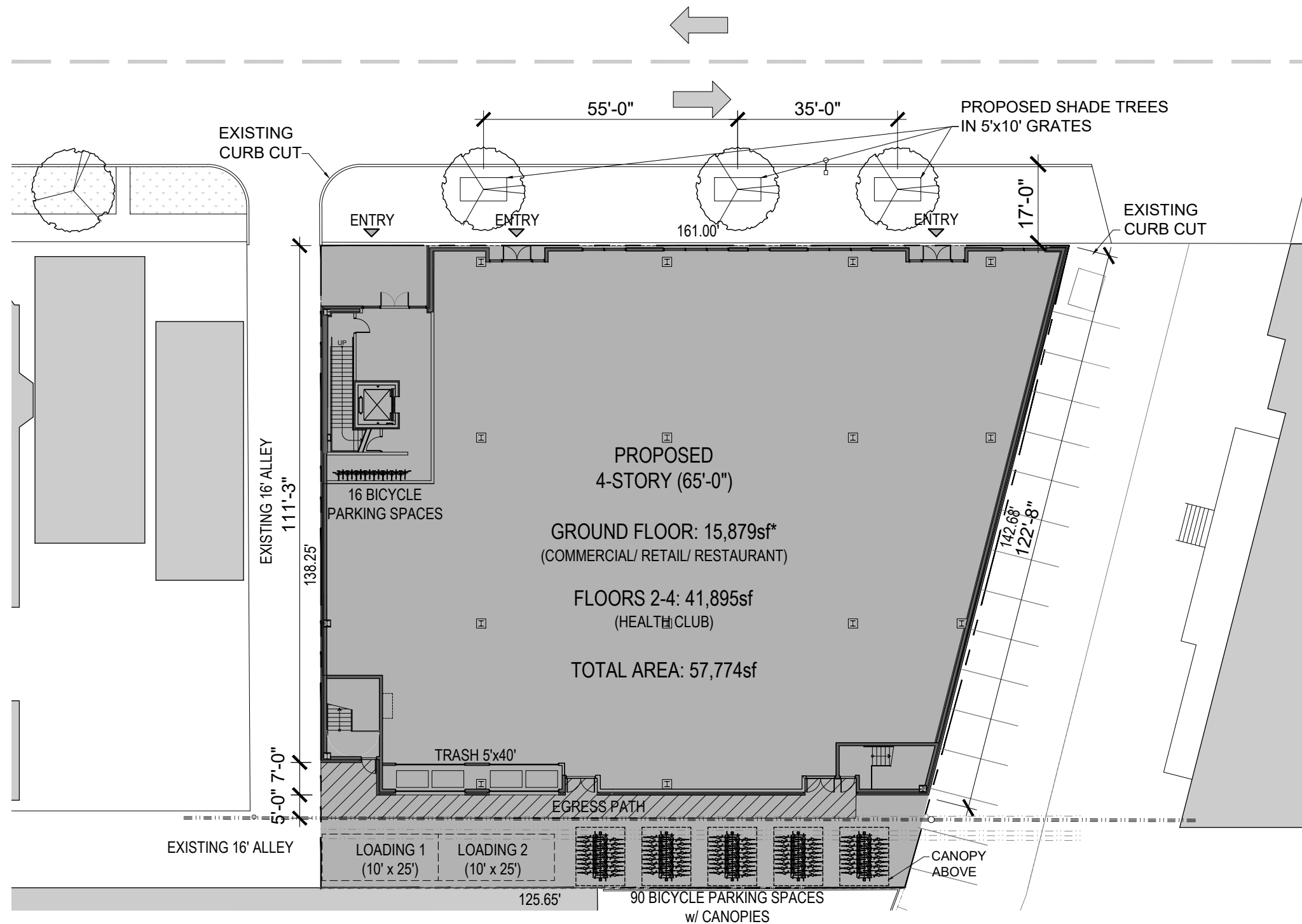
Rendering B

1111 W. ADDISON DEVELOPMENT, LLC

Zoning Submittal
 1111 W. ADDISON
 Chicago, Illinois

2 May, 2018
 16043
 DG/MGL

NOT TO SCALE



PARKING CALCULATIONS		
*15,879sf (GROUND FLOOR AREA)	- 10,000sf (EXCLUDED BY CODE)	= 5,879sf = 15 PARKING SPACES REQ'D (2.5 SPACES REQUIRED PER 1,000sf)
MAX HEALTH CLUB OCCUPANCY = 600 PERSONS x 10% = 60 SPACES REQ'D		
TOTAL SPACES REQ'D = 75		

Site Plan

1111 W. ADDISON DEVELOPMENT, LLC

Zoning Submittal
1111 W. ADDISON
Chicago, Illinois

2 May, 2018
16043
MGL

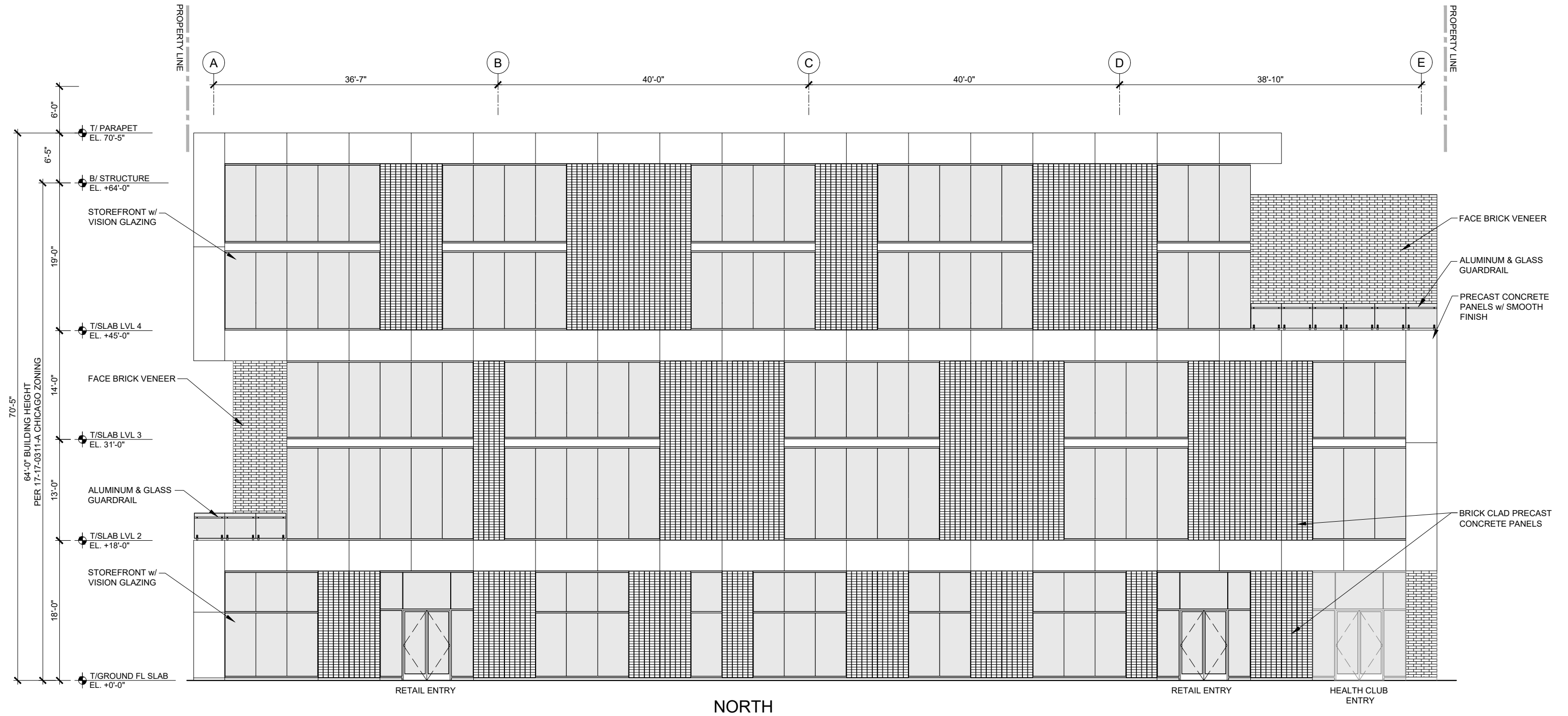


SITE



15' 0 7.5 15 30'
1:30 GRAPHIC SCALE

HirschMPG
ARCHITECTURE + PLANNING



Building Elevations

1111 W. ADDISON DEVELOPMENT, LLC

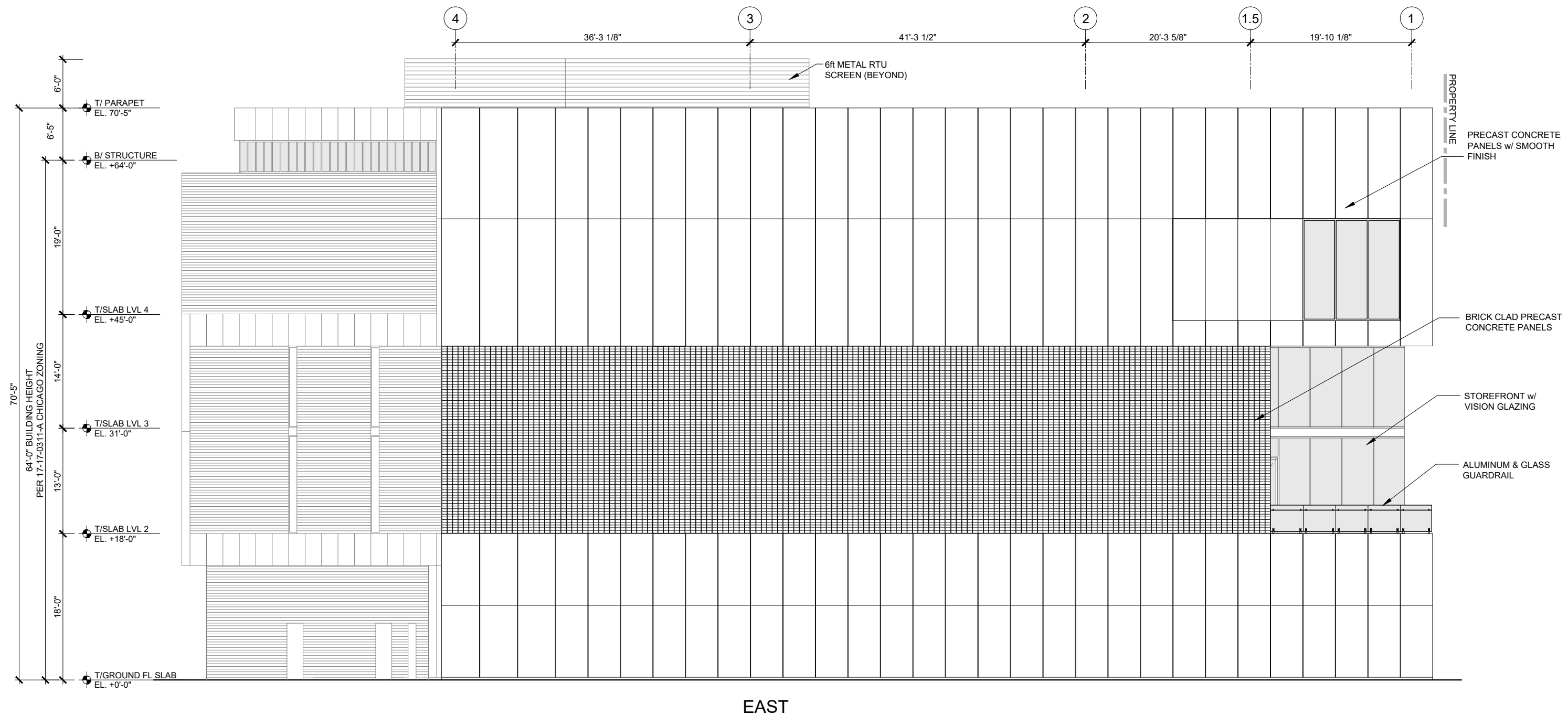
Zoning Submittal
 1111 W. ADDISON
 Chicago, Illinois

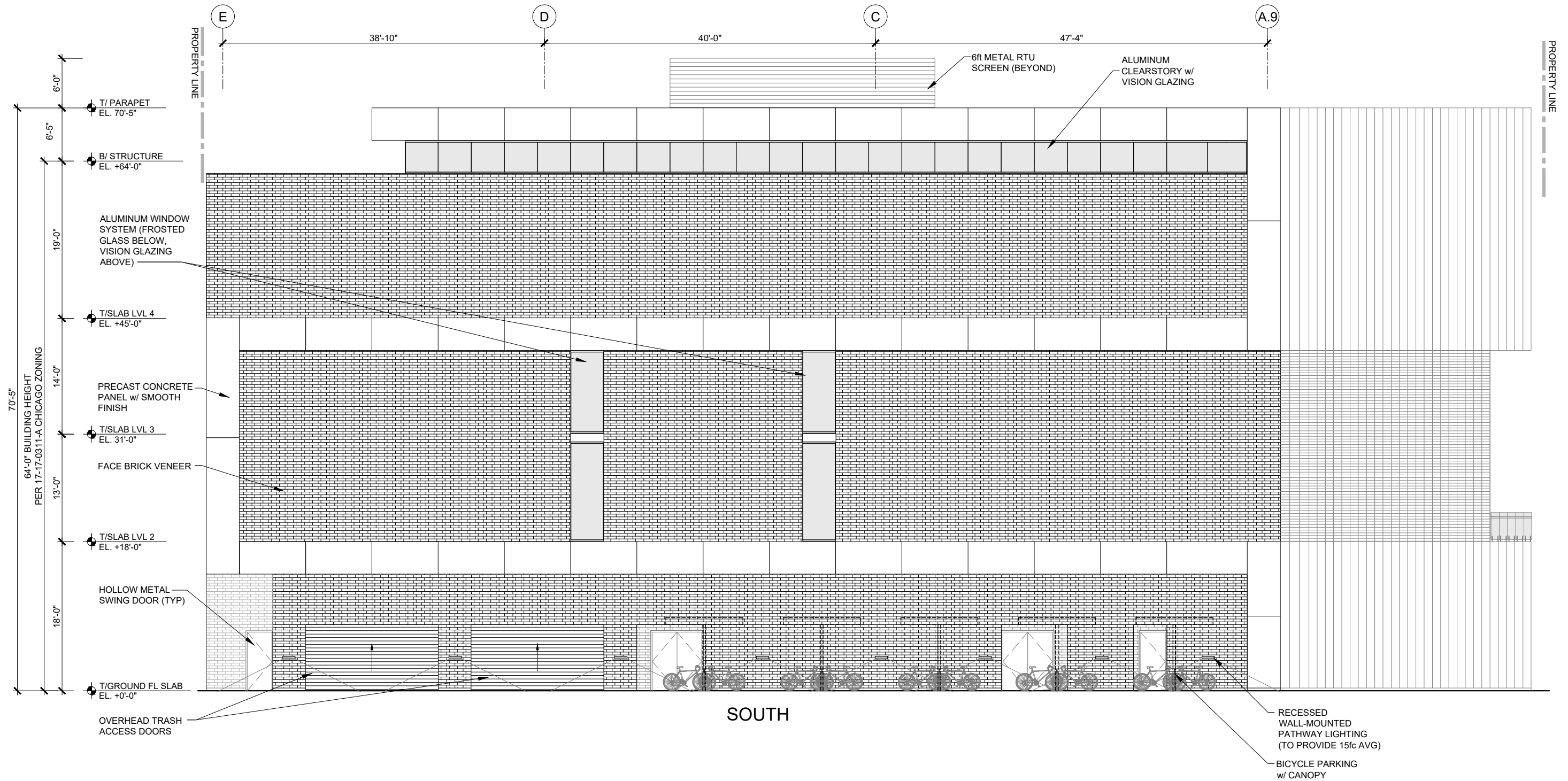
2 May, 2018
 16043
 MGL

© HIRSCH-MPG, LLC 2018

Hirsch | **MPG**
 ARCHITECTURE + PLANNING

NOT TO SCALE





Building Elevations

1111 W. ADDISON DEVELOPMENT, LLC

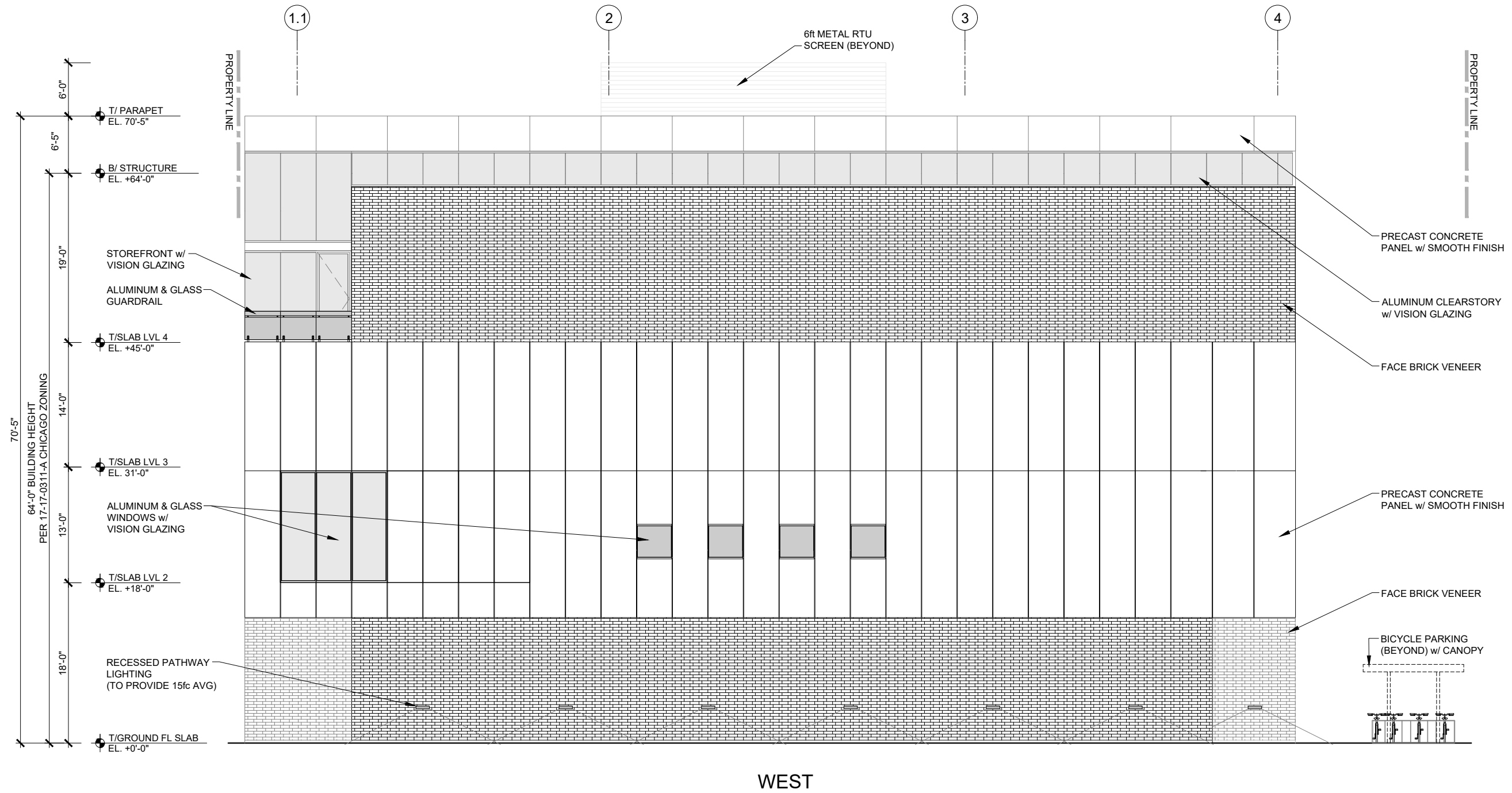
Zoning Submittal
1111 W. ADDISON
Chicago, Illinois

2 May, 2018
16043
MGL

© HIRSCH-MPG, LLC 2018

HirschMPG
ARCHITECTURE + PLANNING

NOT TO SCALE



Building Elevations

1111 W. ADDISON DEVELOPMENT, LLC

Zoning Submittal
1111 W. ADDISON
Chicago, Illinois

NOT TO SCALE

2 May, 2018
16043
MGL

© HIRSCH-MPG, LLC 2018

Hirsch | **MPG**
ARCHITECTURE + PLANNING