

Logistics Plan

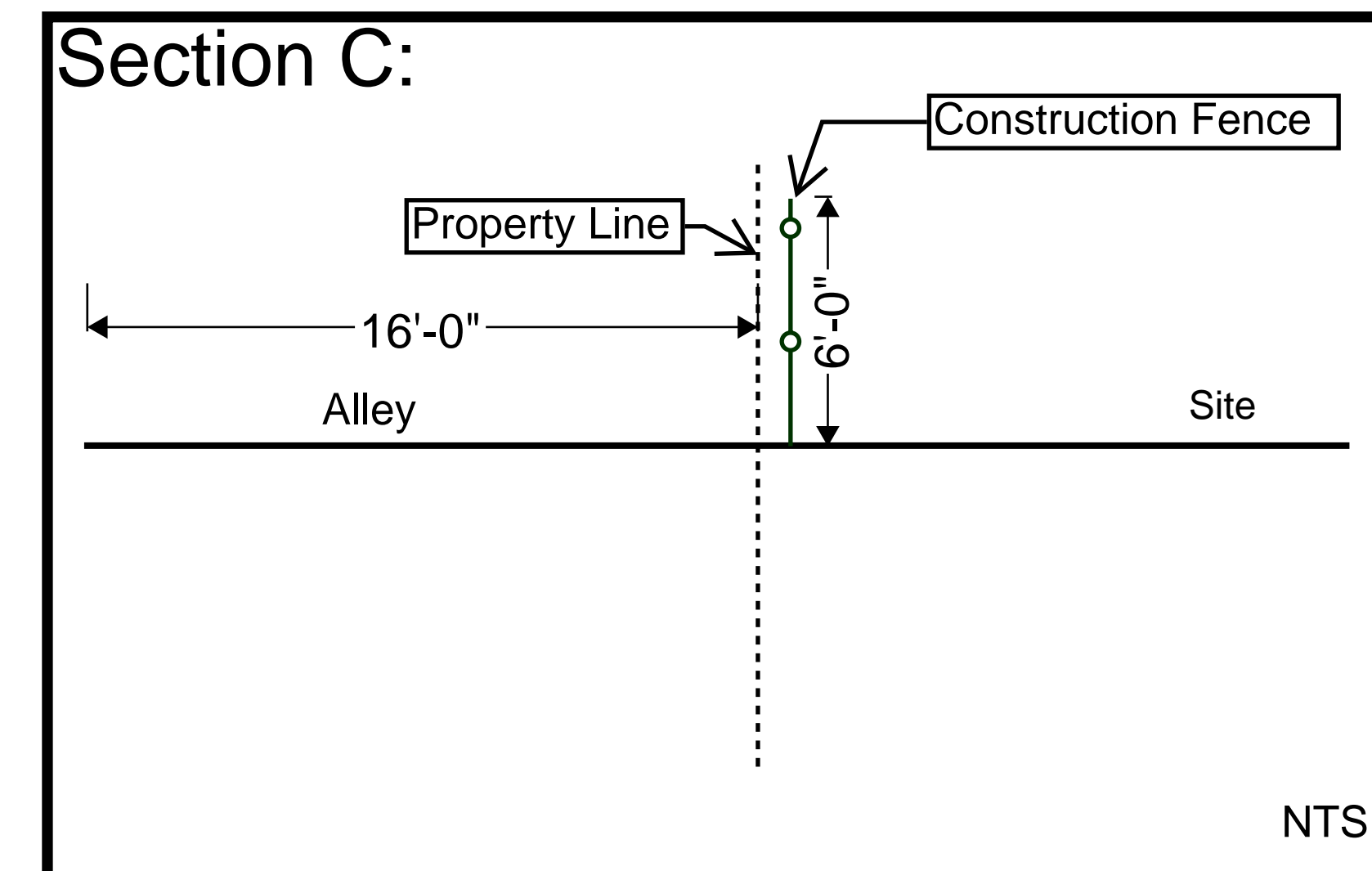
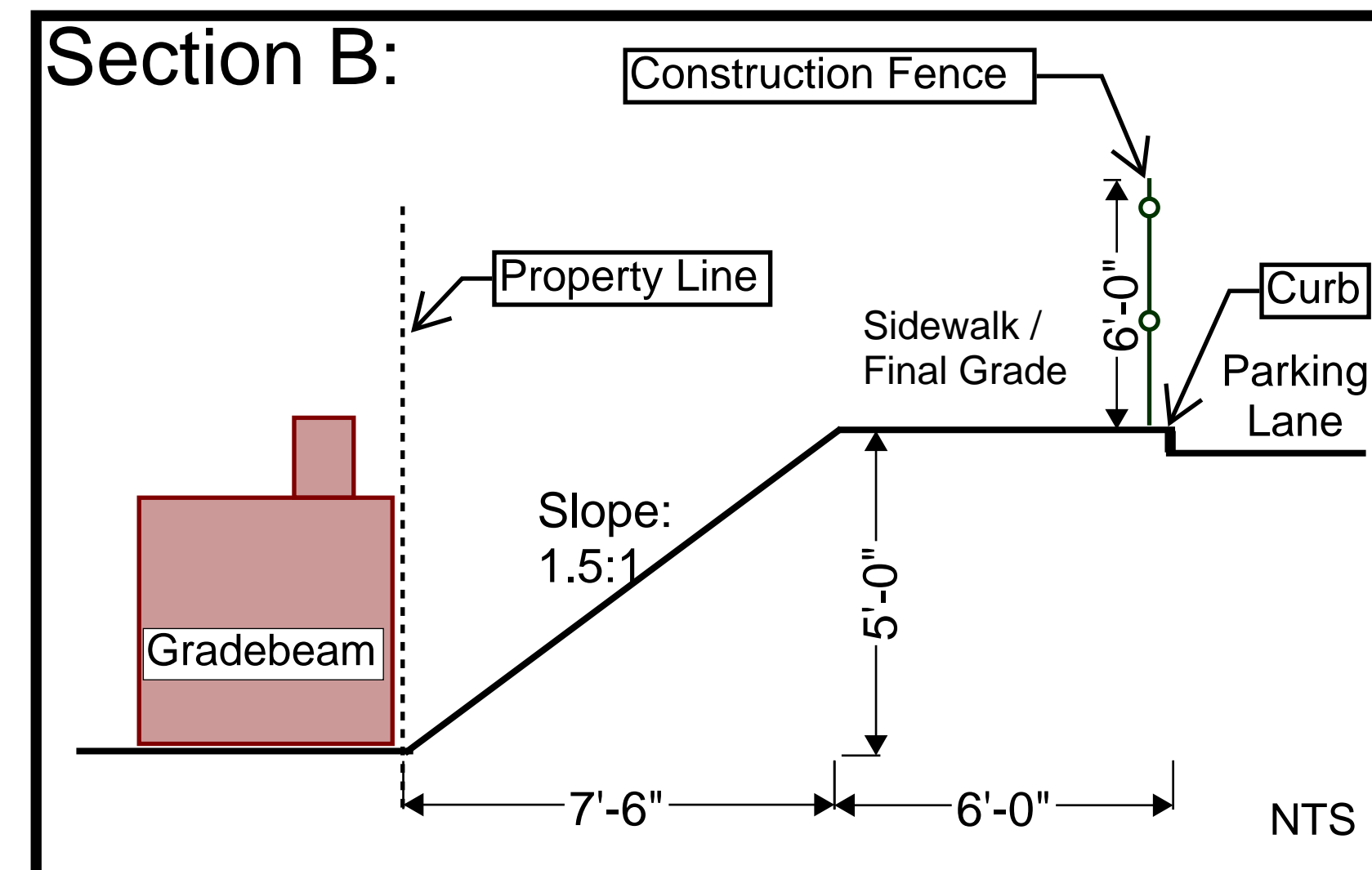
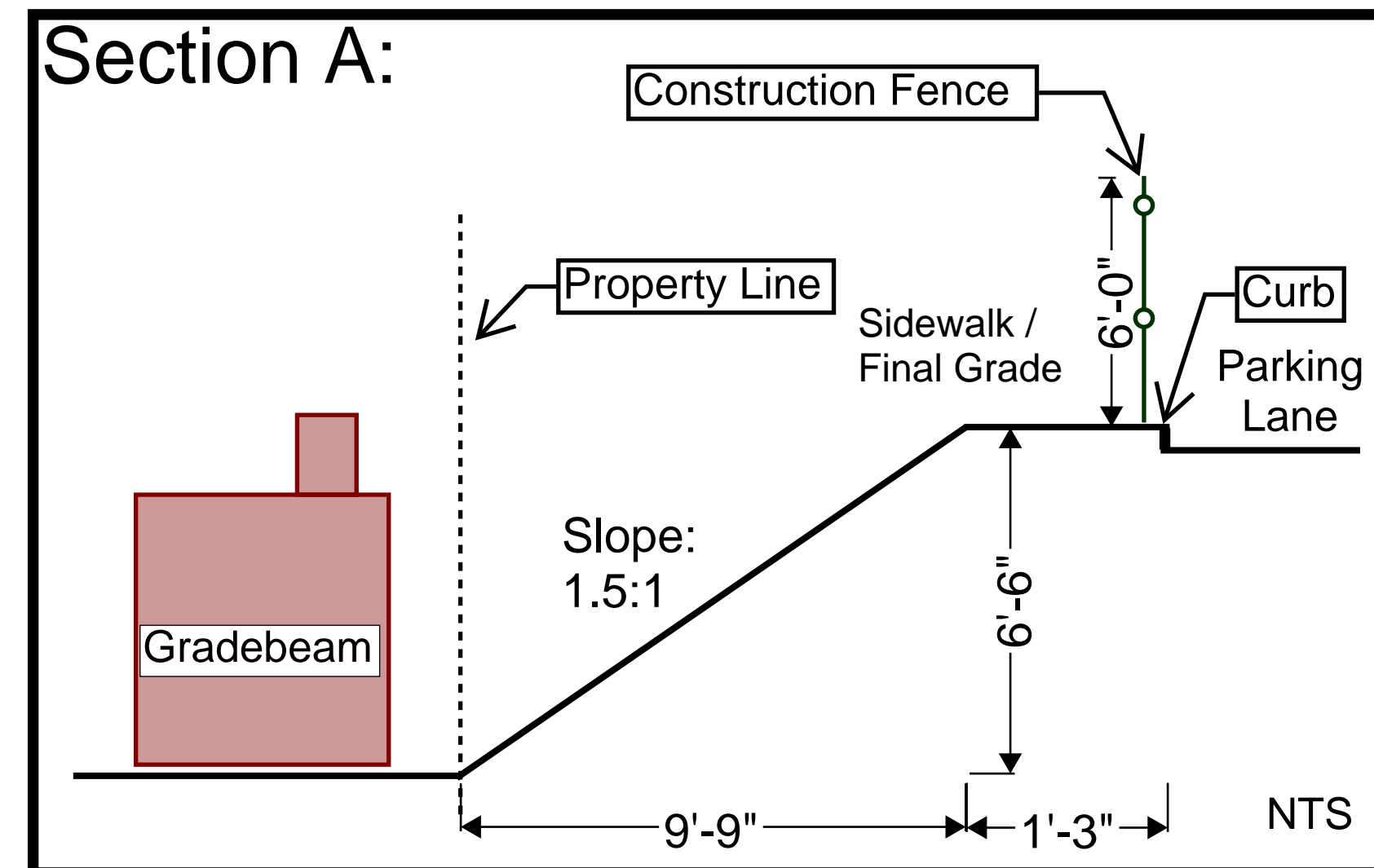
Mobilization and Foundations

Months 1-3

Construction Activities

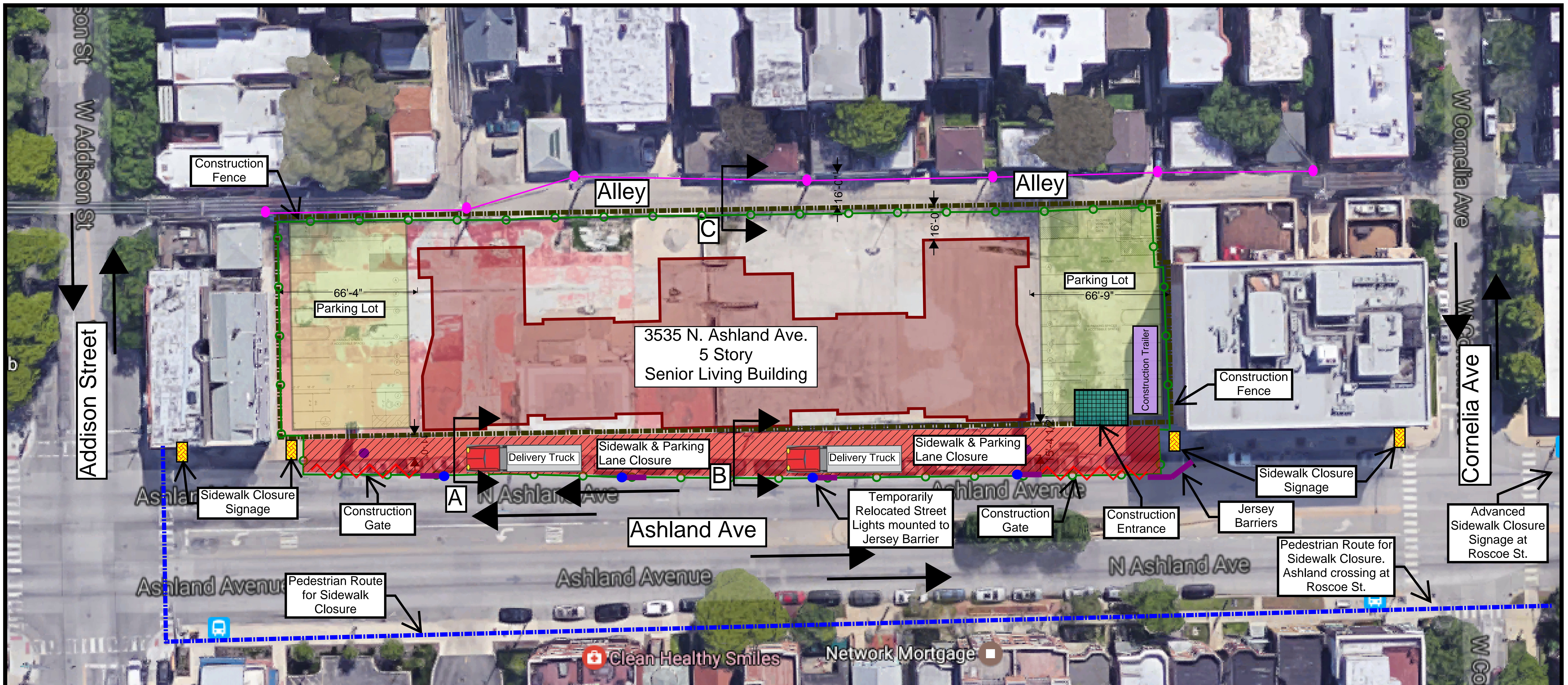
(Months 1-3)

- Remove Street Lights (4)
- Demolish Existing Concrete/Pavement
- Install Underground Utilities under Ashland Ave.
- Begin Foundations & Elevator Pit



LEGEND

- Property Line
- Construction Fence
- Construction Gate
- Construction Entrance
- Sidewalk Closure Area
- Sidewalk Closure Signage
- Overhead Power Line & Poles
- Relocated Street Lights



Artis Senior Living Lakeview
 3535 N. Ashland Ave.
 Chicago, IL 60657
 5/18/17

Approval:

Logistics Plan

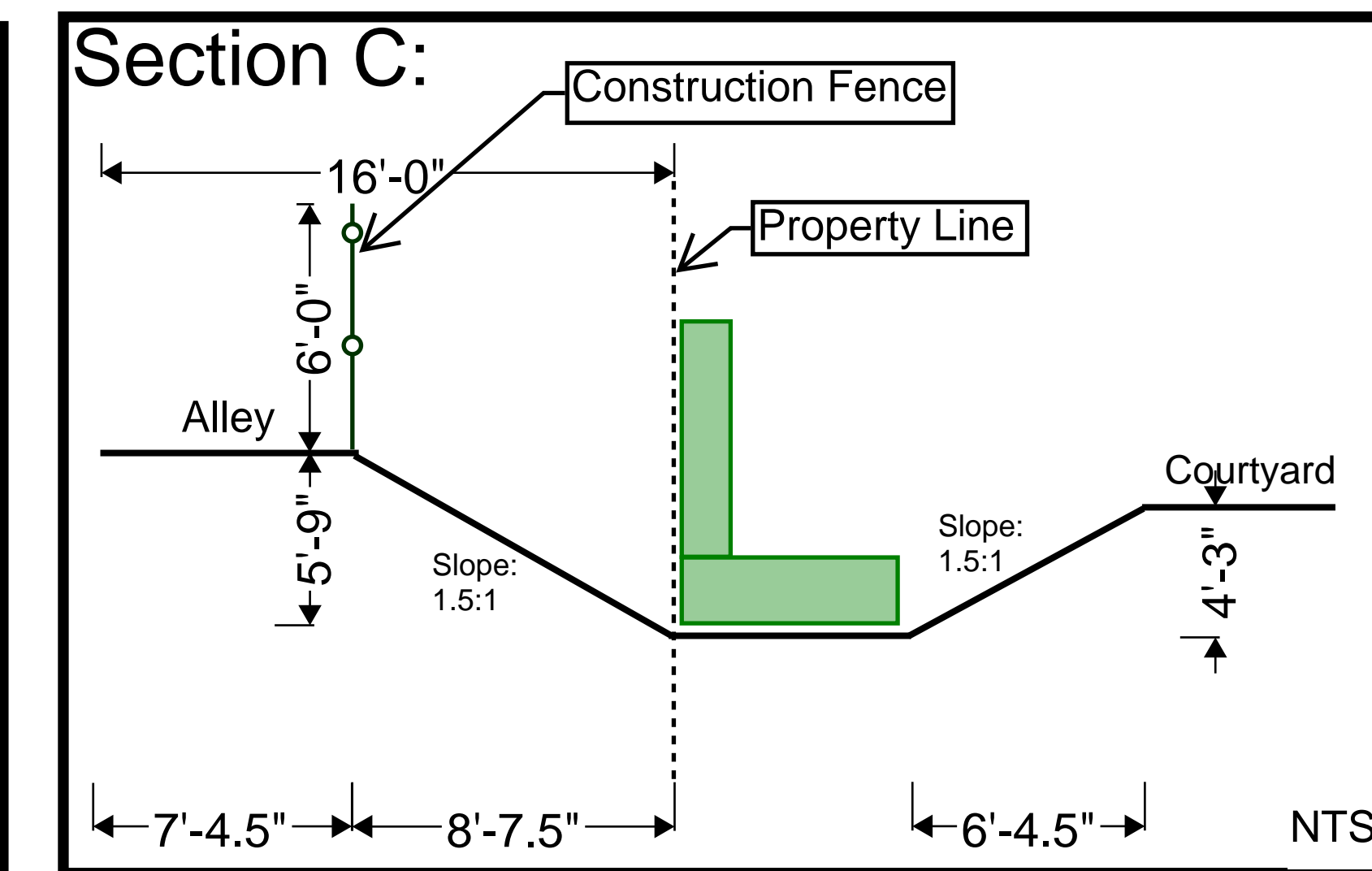
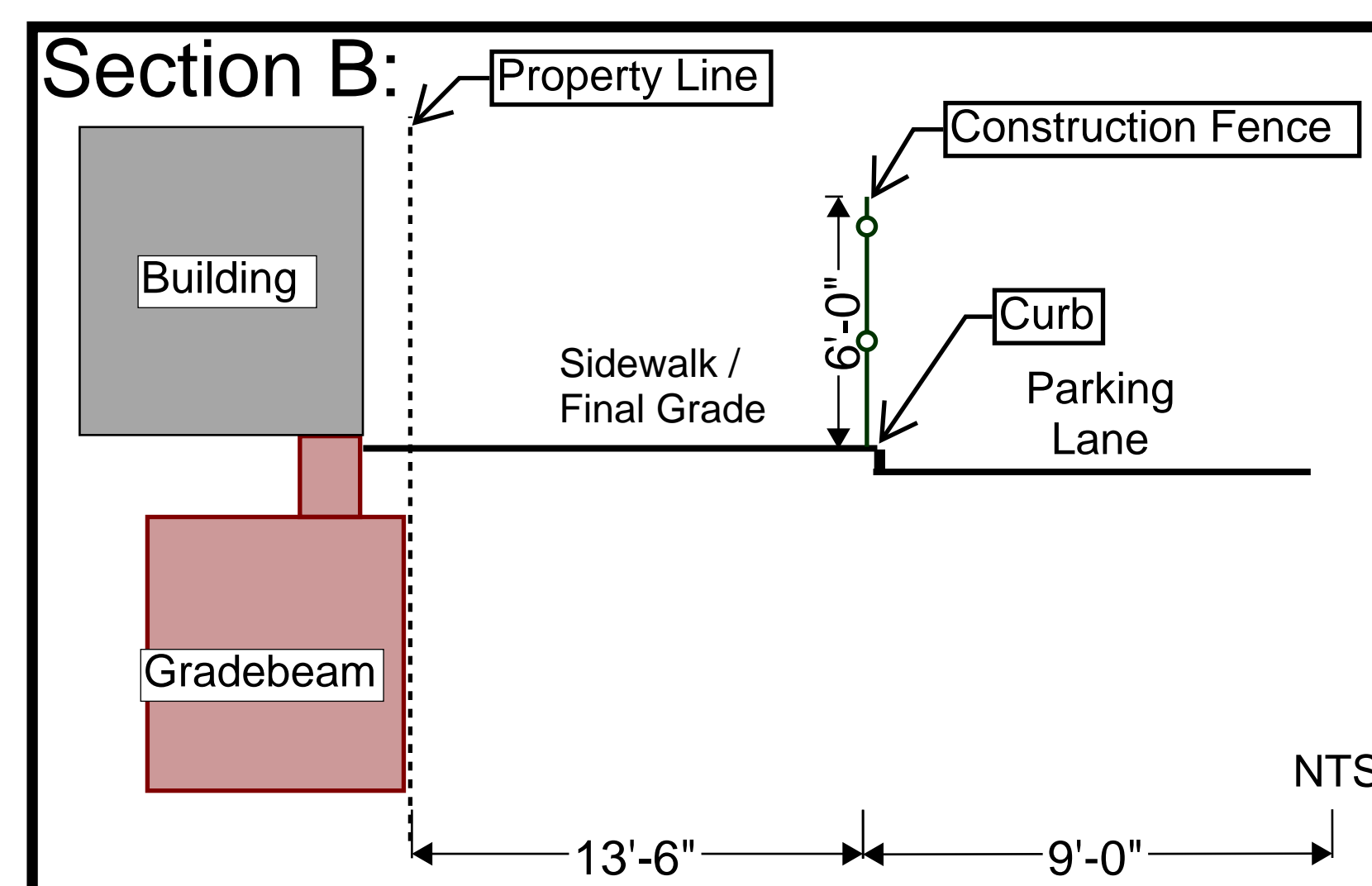
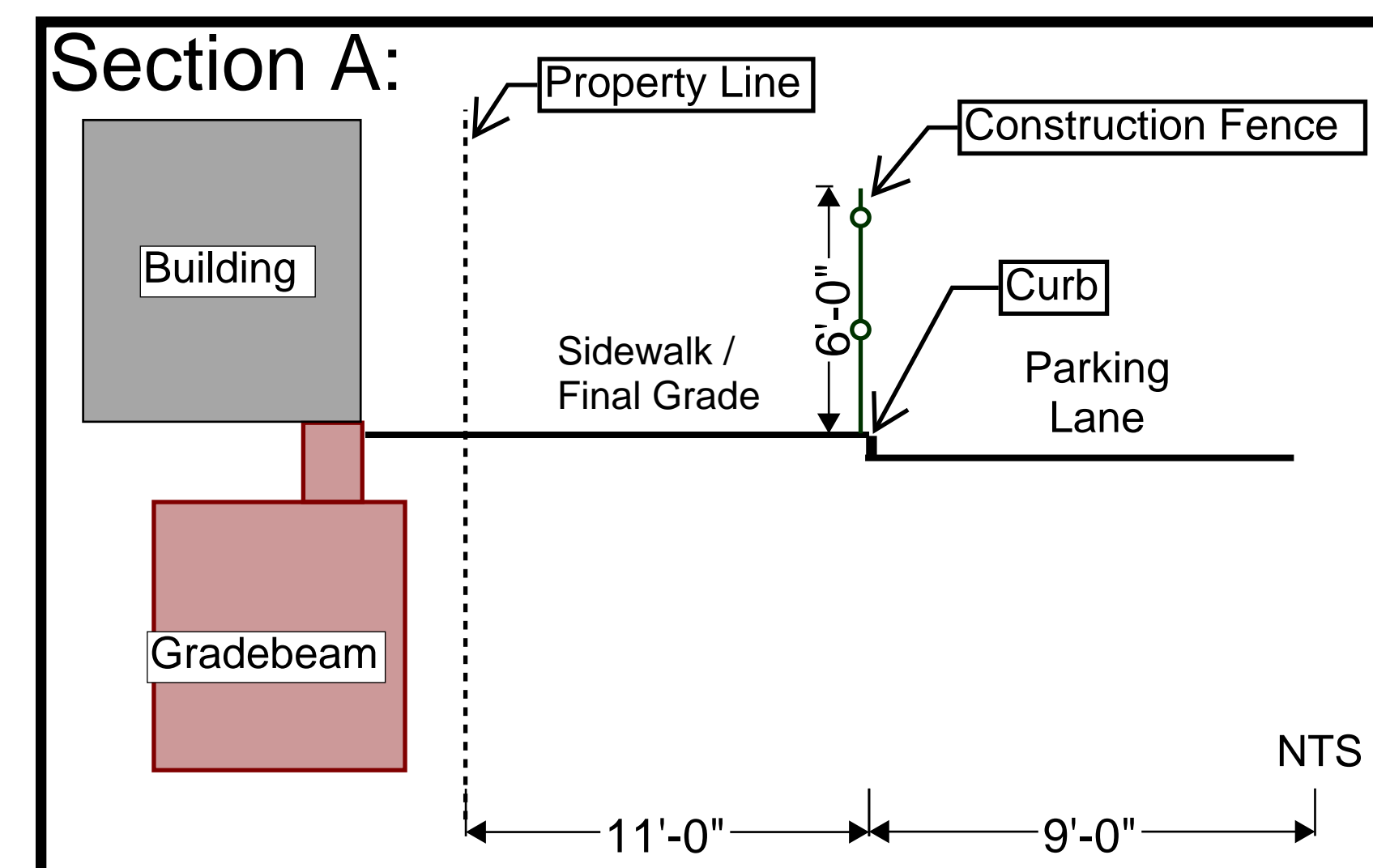
Site Construction

Months 13-14

Construction Activities

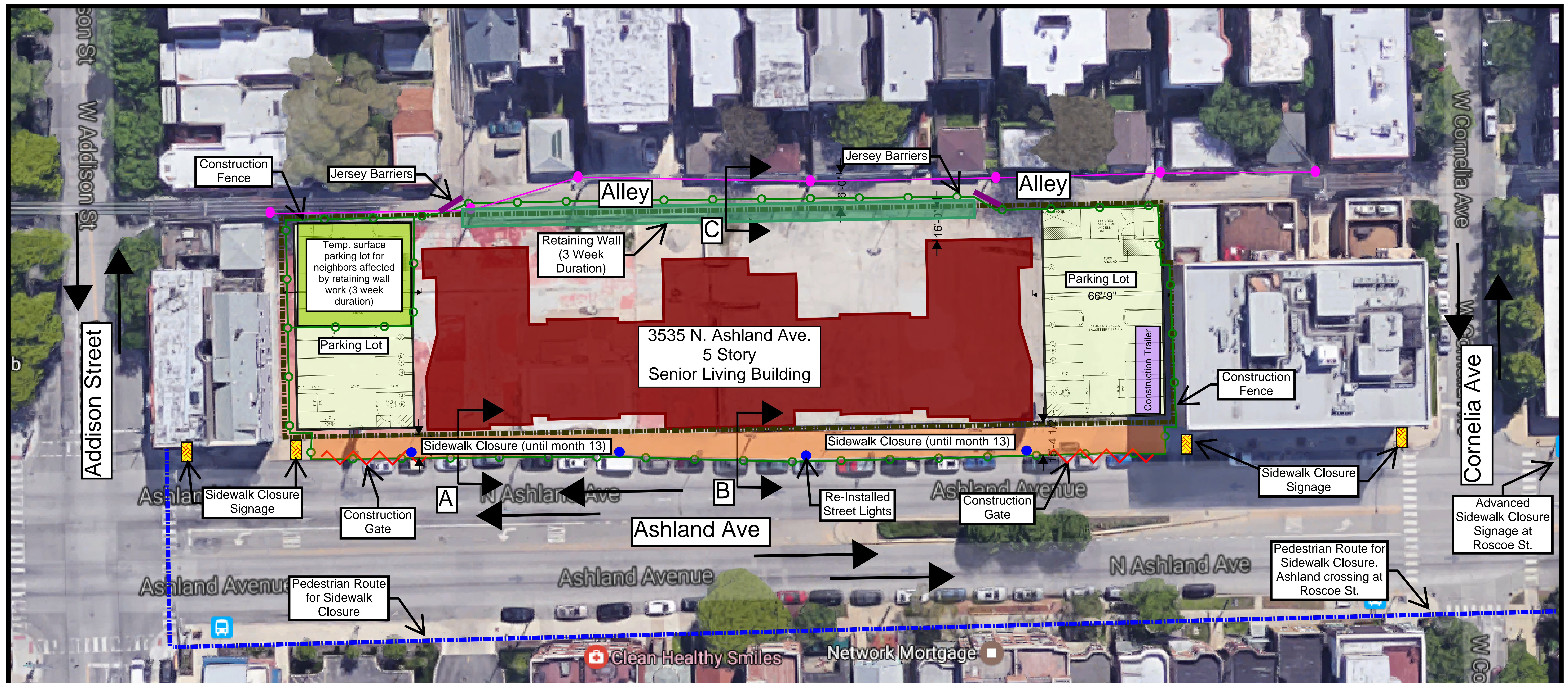
(Months 13-14)

- Site Landscaping, Sidewalks & Paving
- Building Completion
- Retaining Wall (3 Week Duration)
 - Temporary surface parking will be provided for residential garages affected during retaining wall construction. Contractor to coordinate with garbage collection services to ensure garbage cans are picked up. Contractor to move garbage cans to and from resident's property to collection point. Advanced notice will be given to impacted residents prior to work.



LEGEND

- Property Line
- Construction Fence
- Construction Gate
- Sidewalk Closure Area
- Jersey Barrier
- Sidewalk Closure Signage
- Overhead Power Line & Poles
- Re-Installed Street Lights



Artis Senior Living Lakeview

3535 N. Ashland Ave.

Chicago, IL 60657

5/18/17

Approval: